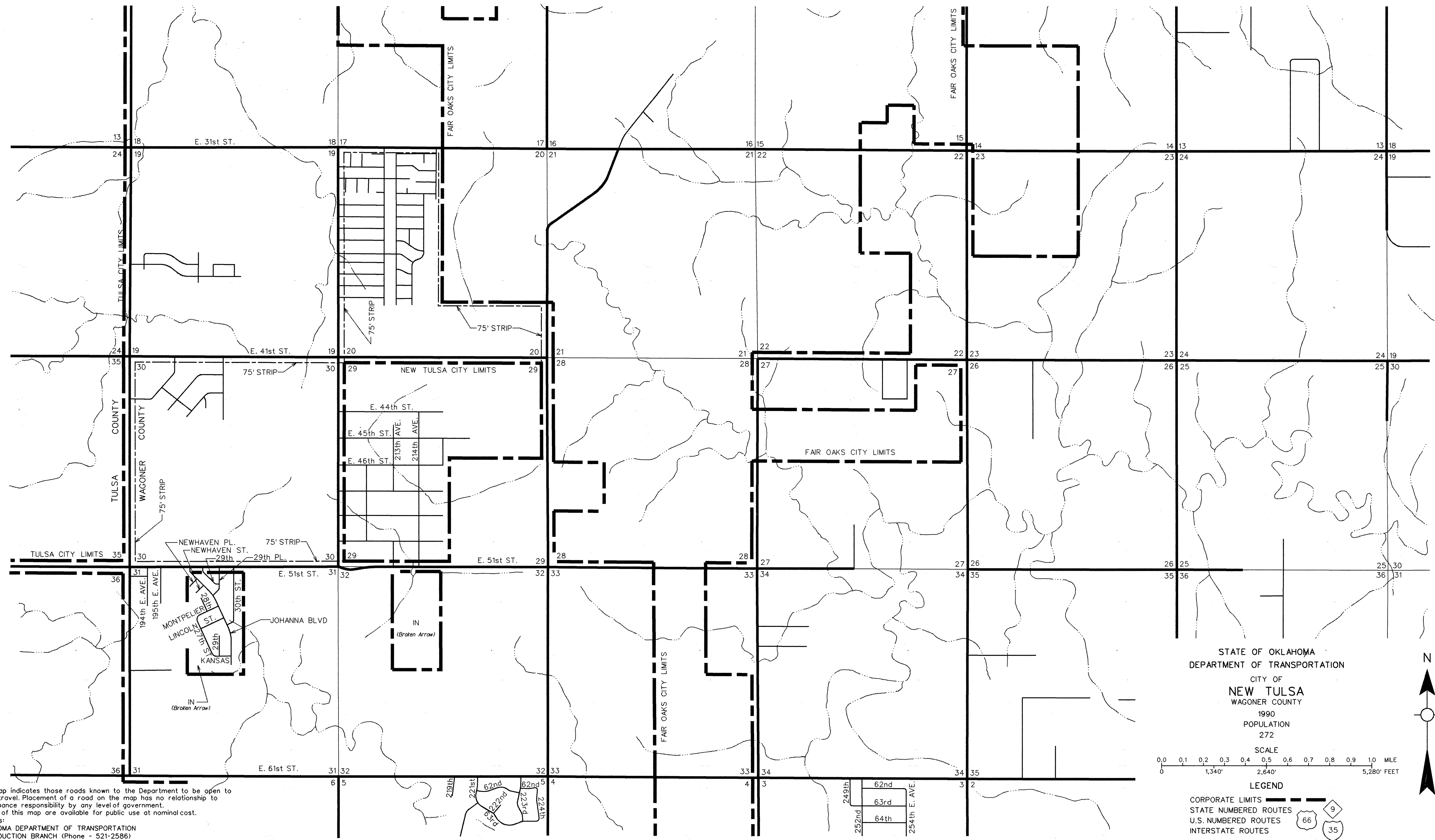
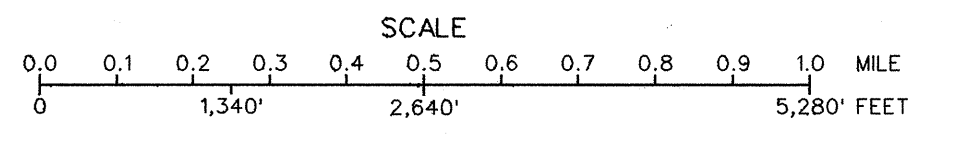


R 15 E

T 19 N

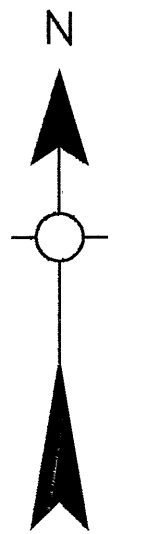


STATE OF OKLAHOMA  
 DEPARTMENT OF TRANSPORTATION  
 CITY OF  
**NEW TULSA**  
 WAGONER COUNTY  
 1990  
 POPULATION  
 272



SCALE  
 0.0 0.1 0.2 0.3 0.4 0.5 0.6 0.7 0.8 0.9 1.0 MILE  
 0 1,340' 2,640' 5,280' FEET

LEGEND  
 CORPORATE LIMITS  
 STATE NUMBERED ROUTES  
 U.S. NUMBERED ROUTES  
 INTERSTATE ROUTES



This map indicates those roads known to the Department to be open to public travel. Placement of a road on the map has no relationship to maintenance responsibility by any level of government. Copies of this map are available for public use at nominal cost.  
 Address:  
 OKLAHOMA DEPARTMENT OF TRANSPORTATION  
 REPRODUCTION BRANCH (Phone - 521-2586)  
 200 N.E. 21st STREET  
 OKLAHOMA CITY, OKLA. 73105

ALL RIGHTS RESERVED

FEBRUARY, 1992

NEW TULSA, WAGONER CO.