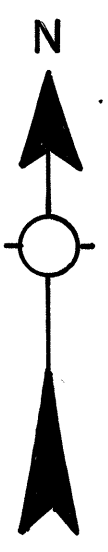
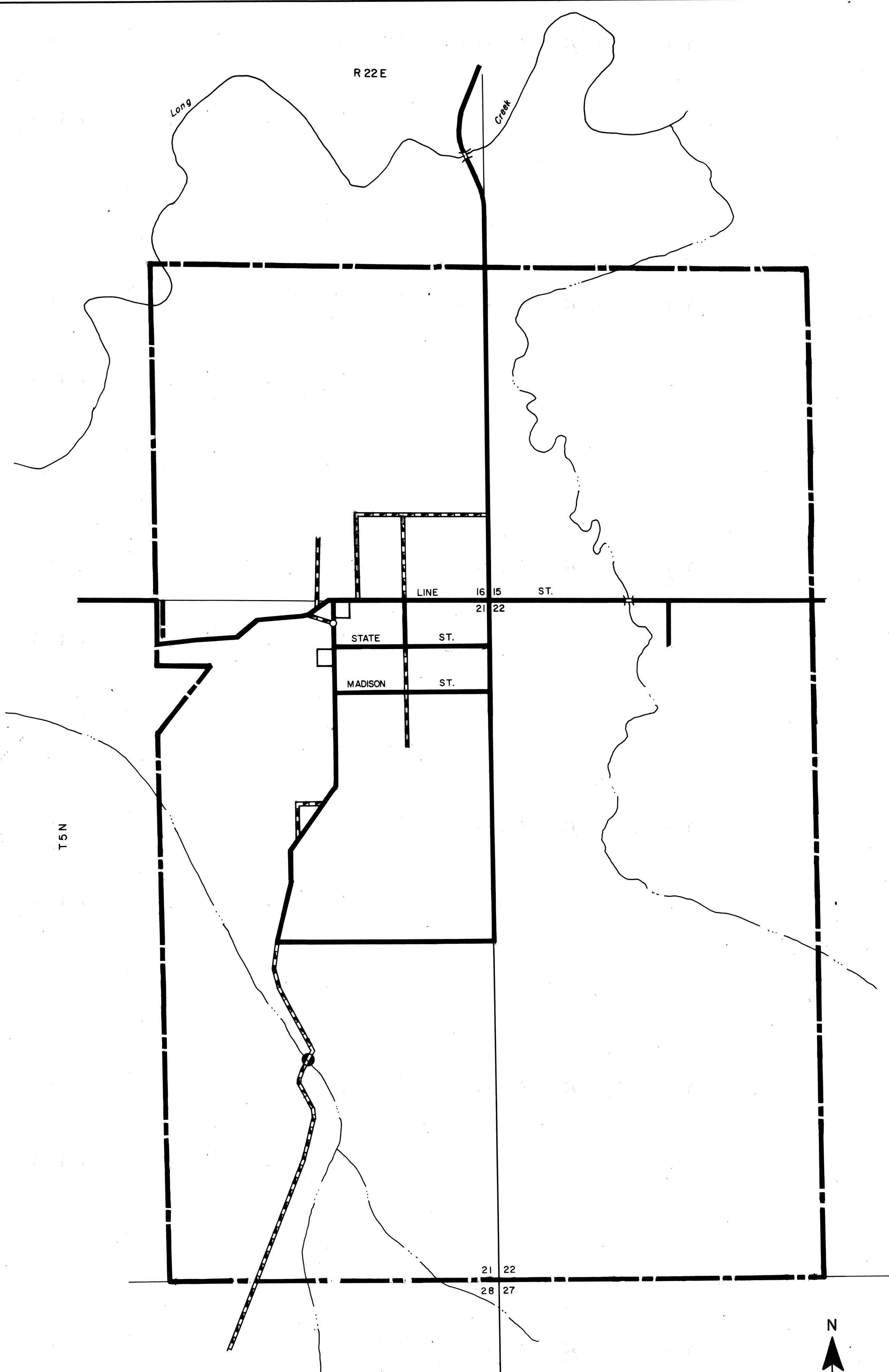
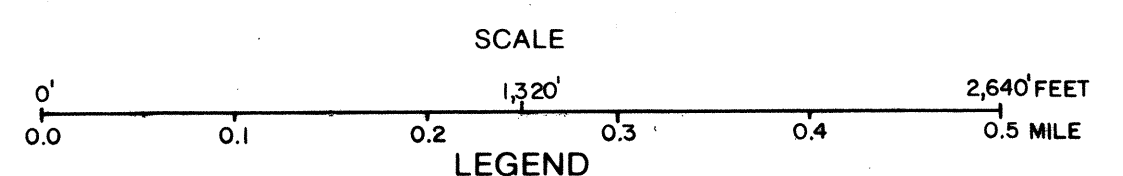


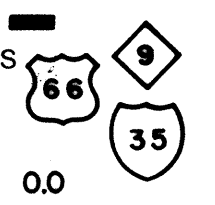
Copies of this map are available for public use at nominal cost.  
 Address: OKLAHOMA DEPARTMENT OF TRANSPORTATION  
 REPRODUCTION BRANCH (Phone — 521-2596)  
 200 N.E. 21st STREET  
 OKLAHOMA CITY, OKLA. 73105



STATE OF OKLAHOMA  
 DEPARTMENT OF TRANSPORTATION  
 CITY OF  
**LE FLORE**  
 LEFLORE COUNTY  
 1990  
 POPULATION  
 119



| MILEAGE                  |     |
|--------------------------|-----|
| PAVED                    | 3.5 |
| GRAVEL                   | 1.4 |
| GRADED & DRAINED         | 0.0 |
| UNIMPROVED               | 0.0 |
| TOTAL STREETS & HIGHWAYS | 4.9 |
| CORPORATE LIMITS         | 0.0 |
| STATE NUMBERED ROUTES    | 0.0 |
| U.S. NUMBERED ROUTES     | 0.0 |
| INTERSTATE ROUTES        | 0.0 |
| STREETS                  | 4.9 |
| HIGHWAYS                 | 0.0 |



ALL RIGHTS RESERVED

LE FLORE, LEFLORE CO.  
 APRIL 1985