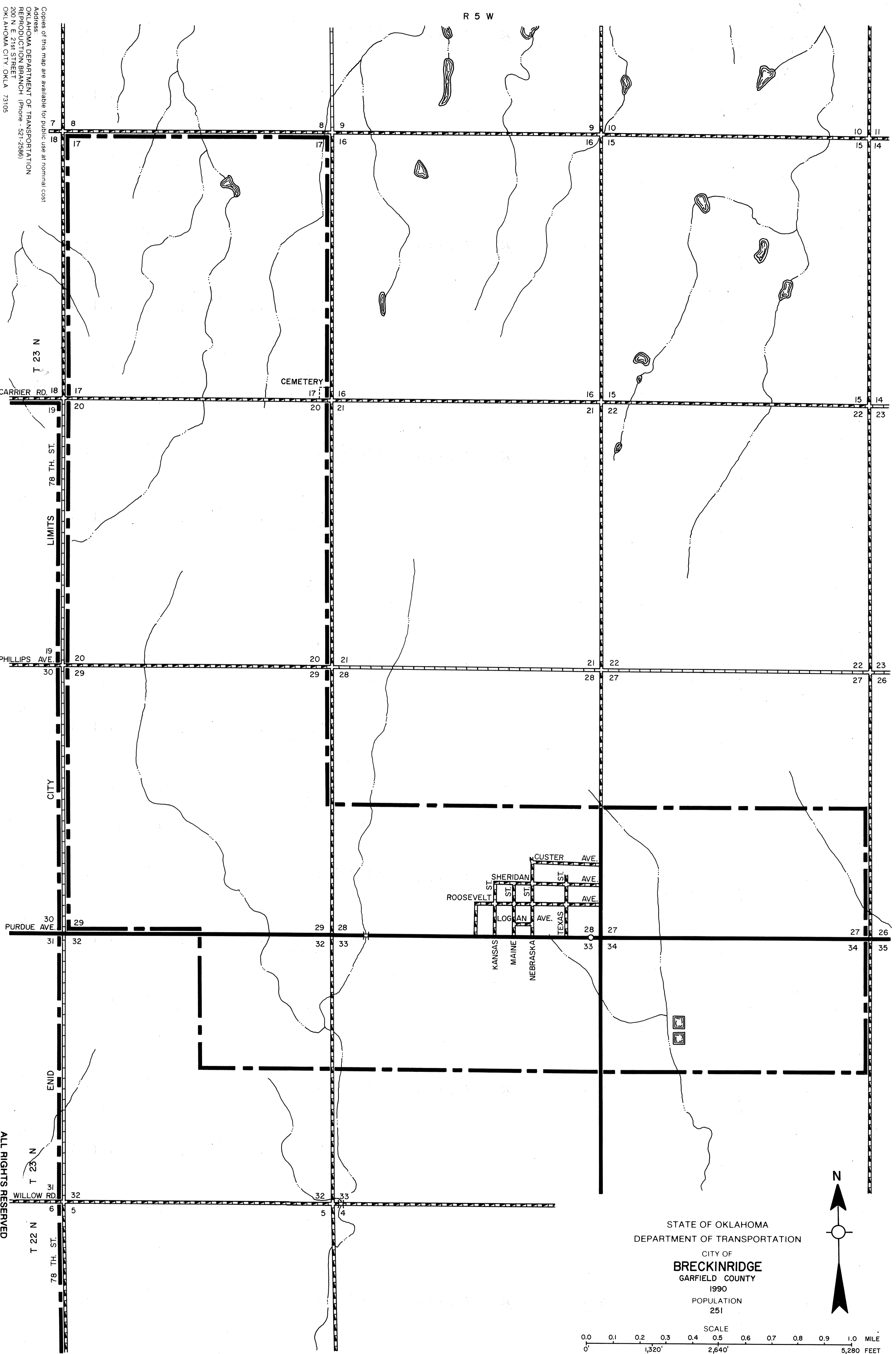


R 5 W



Copies of this map are available for public use at nominal cost  
 Address:  
 OKLAHOMA DEPARTMENT OF TRANSPORTATION  
 REPRODUCTION BRANCH (Phone - 521-2586)  
 200 N. E. 21st STREET  
 OKLAHOMA CITY, OKLA. 73105

T 23 N

CARRIER RD 18

LIMITS  
78 TH. ST.

PHILLIPS AVE

CITY

PURDUE AVE

ENID

T 23 N

WILLOW RD

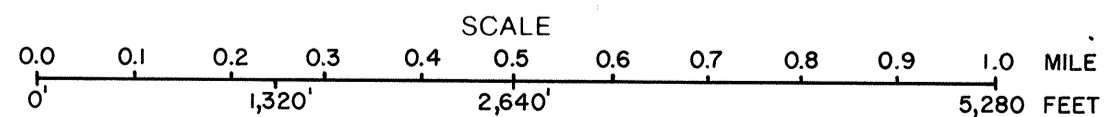
T 22 N

78 TH. ST.

CEMETERY

CUSTER AVE.  
 SHERIDAN ST.  
 ROOSEVELT ST.  
 LOGAN AVE.  
 KANSAS ST.  
 MAINE ST.  
 NEBRASKA ST.  
 TEXAS ST.

STATE OF OKLAHOMA  
 DEPARTMENT OF TRANSPORTATION  
 CITY OF  
**BRECKINRIDGE**  
 GARFIELD COUNTY  
 1990  
 POPULATION  
 251



LEGEND

MILEAGE	
PAVED	3.5 CORPORATE LIMITS
GRAVEL	5.3 STATE NUMBERED ROUTES
GRADED & DRAINED	0.0 U.S. NUMBERED ROUTES
UNIMPROVED	0.0 INTERSTATE ROUTES
TOTAL STREETS & HIGHWAYS	8.8 STREETS 8.8 HIGHWAYS 0.0

