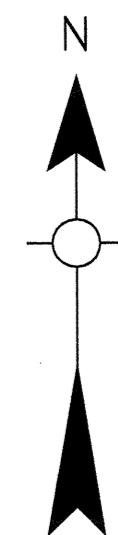
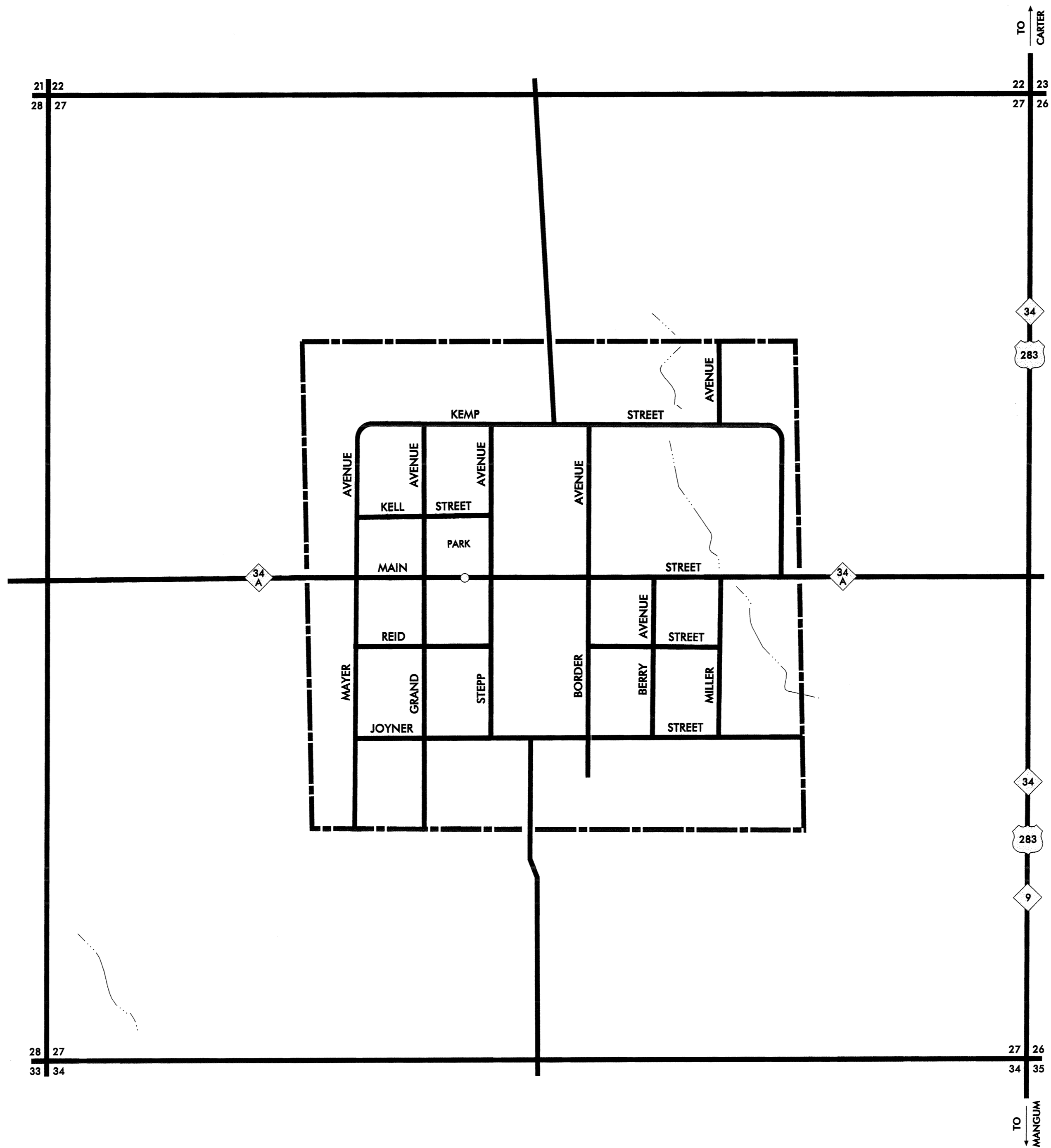


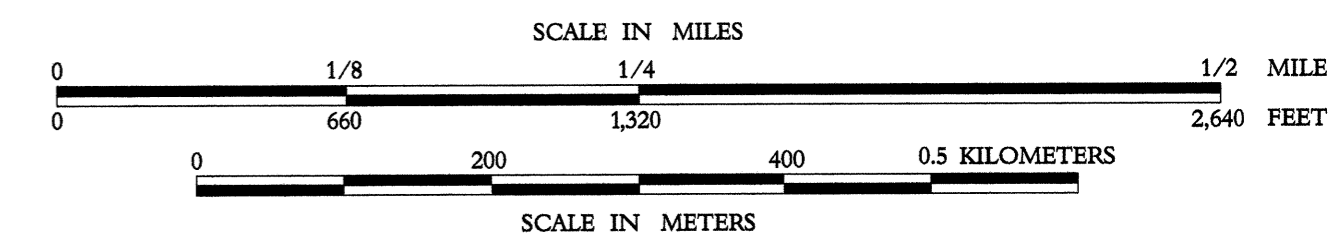
R 22 W

T 7 N



STATE OF OKLAHOMA
DEPARTMENT OF TRANSPORTATION

CITY OF
WILLOW
GREER COUNTY
2000
POPULATION
114



LEGEND

- CORPORATE LIMITS
- STATE NUMBERED ROUTES
- U.S. NUMBERED ROUTES
- INTERSTATE ROUTES

Copies of this map are available for public use at nominal cost.
Address:
OKLAHOMA DEPARTMENT OF TRANSPORTATION
REPRODUCTION BRANCH (Phone - 521-2586)
200 N.E. 21st STREET
OKLAHOMA CITY, OKLA. 73105

ALL RIGHTS RESERVED

COMPUTER GENERATED

OCTOBER, 2000

WILLOW, GREER COUNTY