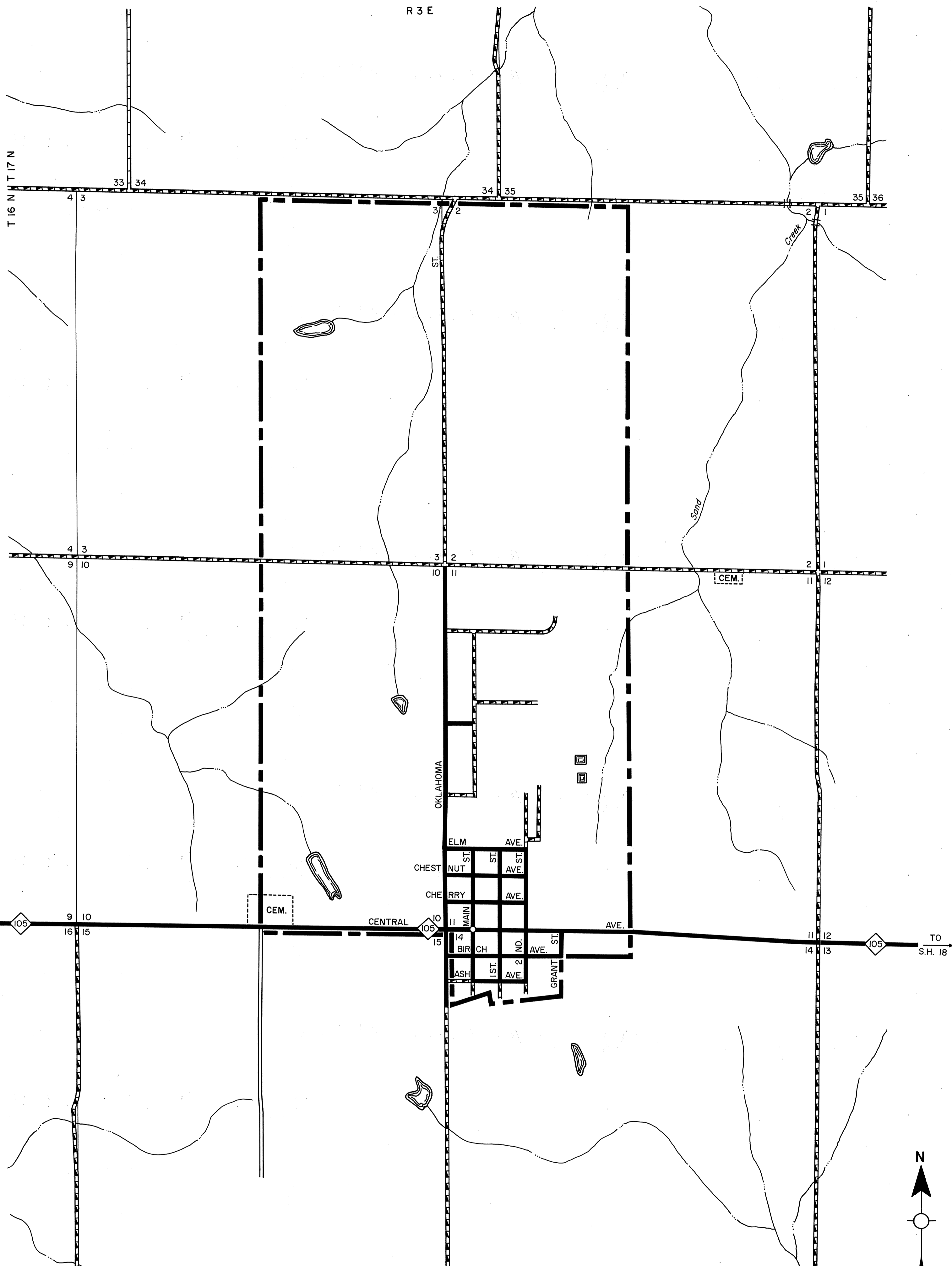


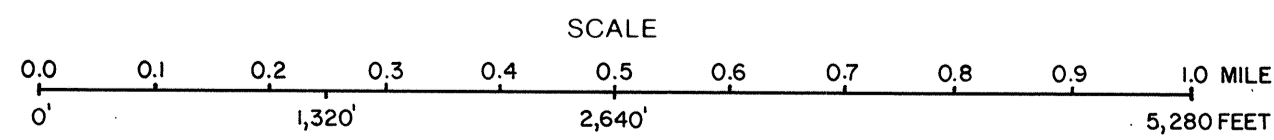
Copies of this map are available for public use at nominal cost.  
 Address:  
 OKLAHOMA DEPARTMENT OF TRANSPORTATION  
 PUBLIC UTILITIES BRANCH (Phone - 521-2586)  
 201 N. E. 24th STREET  
 OKLAHOMA CITY, OKLA. 73105



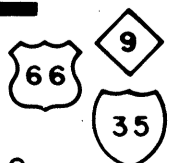
STATE OF OKLAHOMA  
 DEPARTMENT OF TRANSPORTATION

CITY OF  
**TRYON**  
 LINCOLN COUNTY

1990  
 POPULATION  
 514



LEGEND	
MILEAGE	
PAVED	4.4 CORPORATE LIMITS
GRAVEL	3.5 STATE NUMBERED ROUTES
GRADED & DRAINED	0.0 U.S. NUMBERED ROUTES
UNIMPROVED	0.0 INTERSTATE ROUTES
TOTAL STREETS & HIGHWAYS	7.9 STREETS 6.9 HIGHWAYS 1.0



ALL RIGHTS RESERVED

TRYON, LINCOLN CO.  
 MARCH 1990