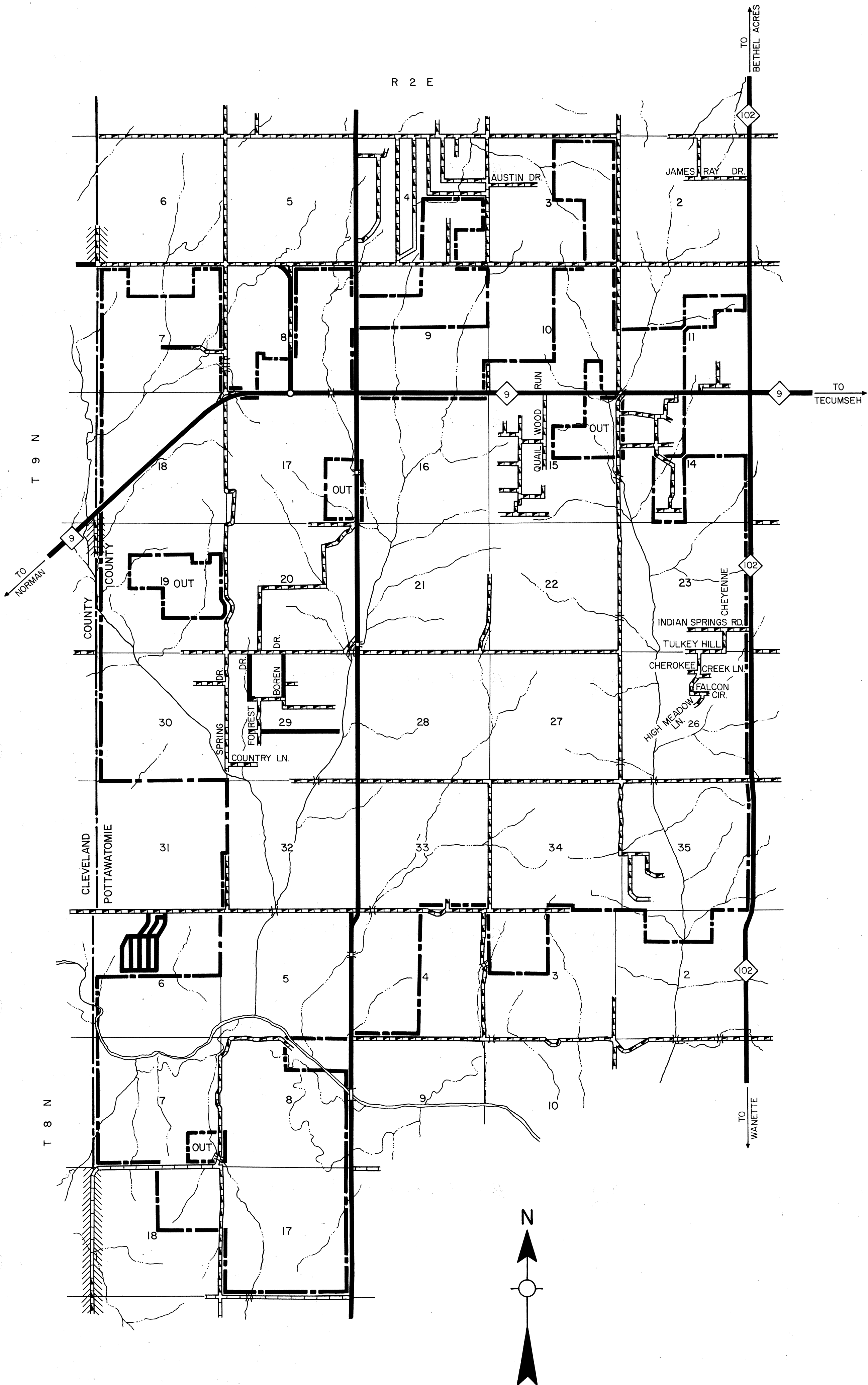
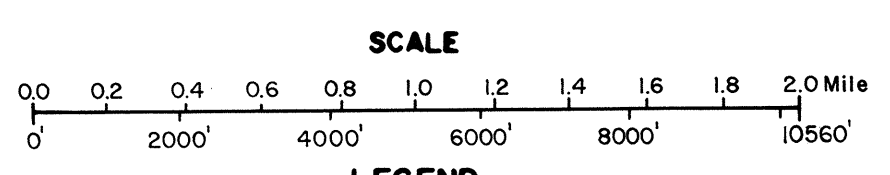


Copies of this map are available for public use at nominal cost.
 Address: OKLAHOMA DEPARTMENT OF TRANSPORTATION
 REPRODUCTION BRANCH (Phone - 521-2586)
 200 N.E. 21st STREET
 OKLAHOMA CITY, OKLA. 73105



STATE OF OKLAHOMA
 DEPARTMENT OF TRANSPORTATION
 CITY OF PINK
 POTTAWATOMIE COUNTY

1990
 POPULATION
 1,020



LEGEND

CORPORATE LIMITS		CORPORATE LIMITS	
SURFACE TYPE	LIMITS MILEAGE	10.4	29.5
PAVED	10.4	CORPORATE LIMITS	10.4
GRAVEL	29.5	STATE NUMBERED ROUTES	29.5
GRADED & DRAINED	0.5	U.S. NUMBERED ROUTES	0.5
UNIMPROVED	0.0	INTERSTATE ROUTES	0.0
TOTAL STREETS & HIGHWAYS 40.4		STREETS 36.7 HIGHWAYS 3.7	

ALL RIGHTS RESERVED

PINK, POTTAWATOMIE CO.

JUNE 1994