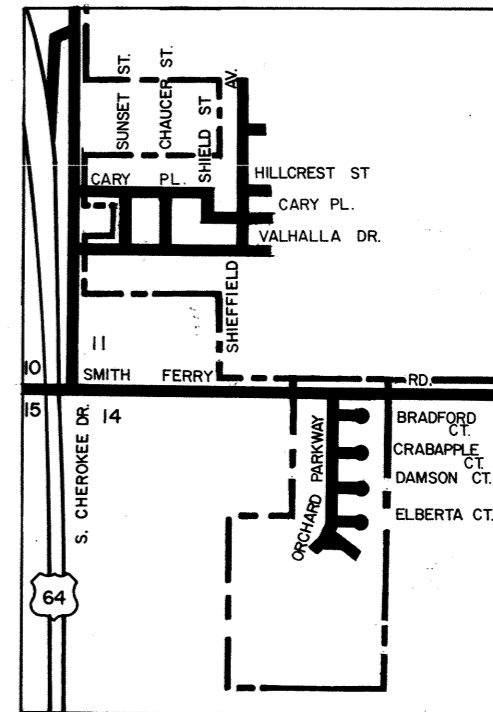
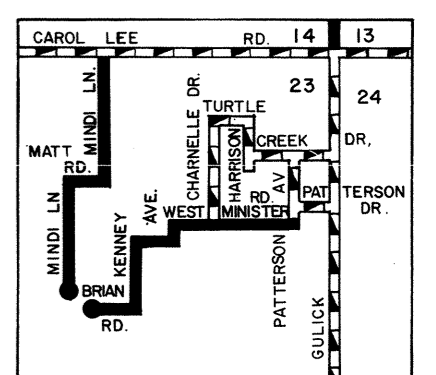


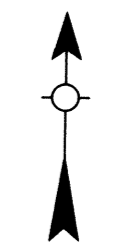
INSET NO. 2  
SCALE 1:320'  
0 0.1 0.2 0.3 0.4 0.5 0.6 0.7 0.8 0.9 1.0 MILE



INSET NO. 1  
SCALE 1:320'  
0 0.1 0.2 0.3 0.4 0.5 MILE



INSET NO. 3  
SCALE 1:320'  
0 0.1 0.2 0.3 0.4 0.5 MILE



STATE OF OKLAHOMA  
DEPARTMENT OF TRANSPORTATION  
CITY OF  
**MUSKOGEE**  
MUSKOGEE COUNTY  
1990  
POPULATION  
37,708  
SCALE  
0 0.2 0.4 0.6 0.8 1.0 MILE

**LEGEND**

	PAVED	267.0		CORPORATE LIMITS
	GRAVEL	9.2		STATE NUMBERED ROUTES
	GRADED & DRAINED	1.1		U.S. NUMBERED ROUTES
	UNIMPROVED	0.0		INTERSTATE ROUTES
<b>TOTAL STREETS &amp; HIGHWAYS 277.3</b>		<b>STREETS 256.0 HIGHWAYS 21.3</b>		

Copies of this map are available for public use at nominal cost.  
ADDRESS:  
OKLAHOMA DEPARTMENT OF TRANSPORTATION  
REPRODUCTION BRANCH (PHONE - 521-5366)  
200 N. E. 5TH STREET  
OKLAHOMA CITY, OKLA. 73105