

R 4 E

T 1 N

TO ROFF

11 12
14 13

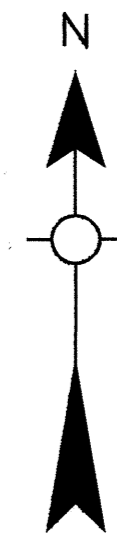
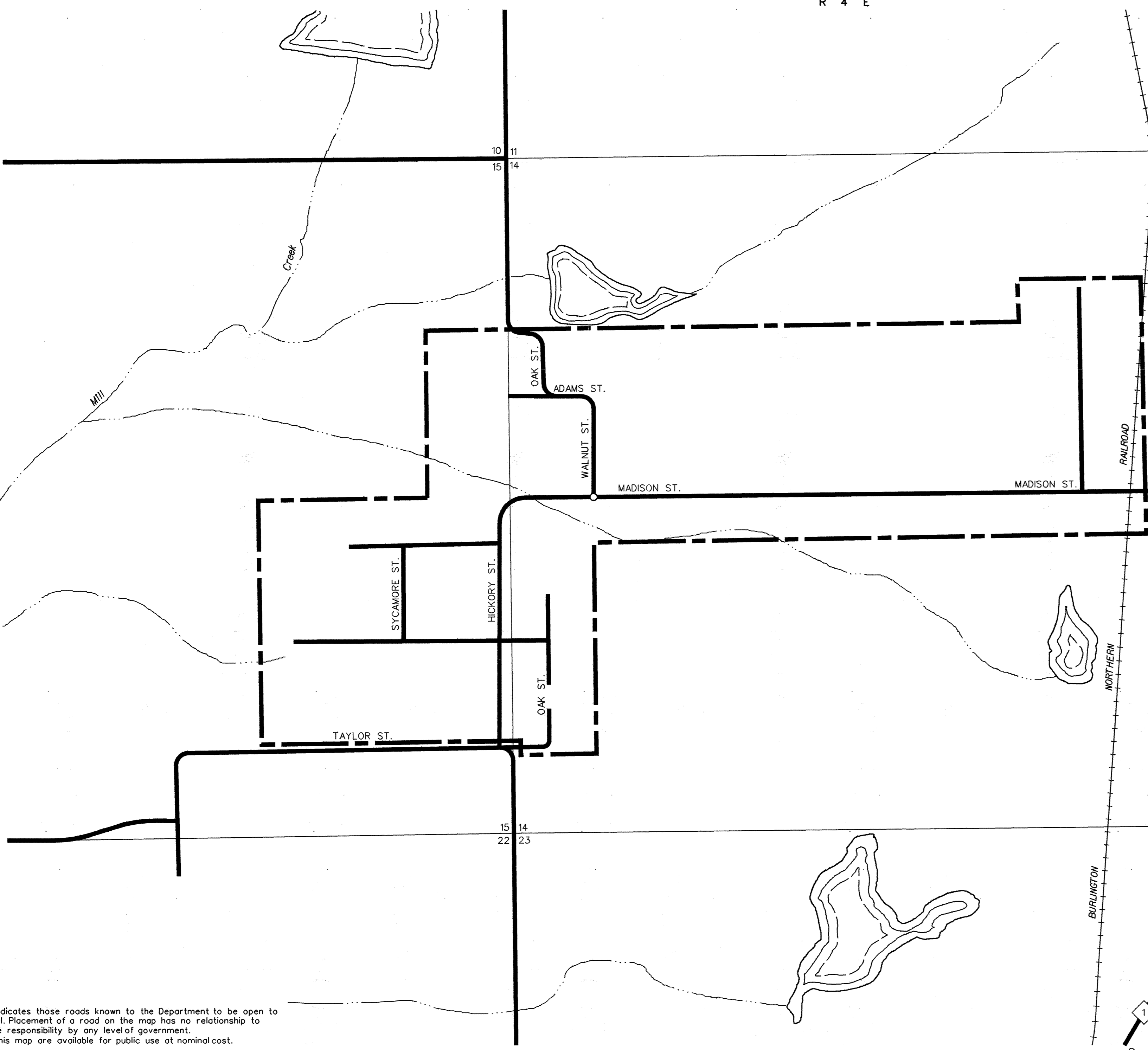
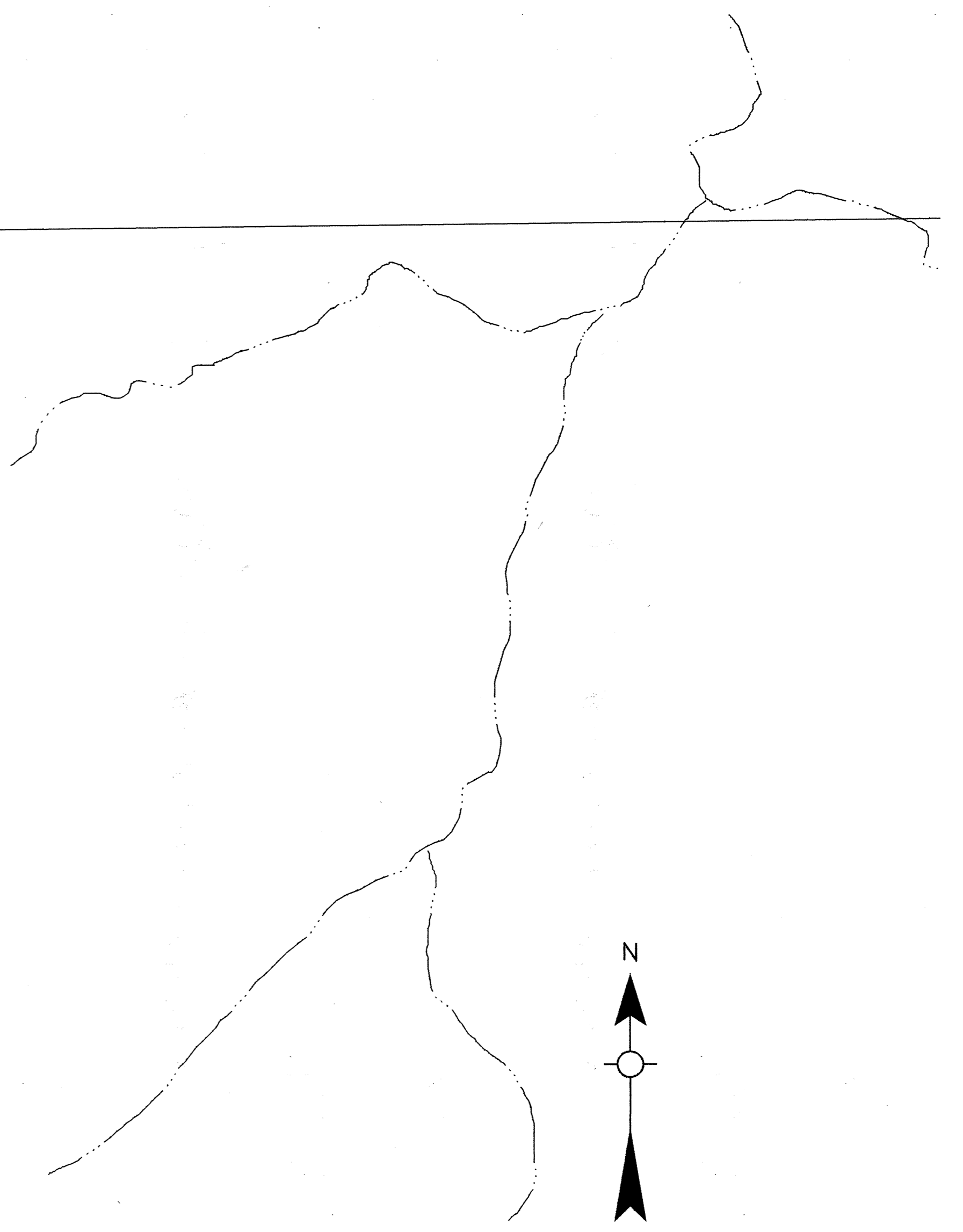
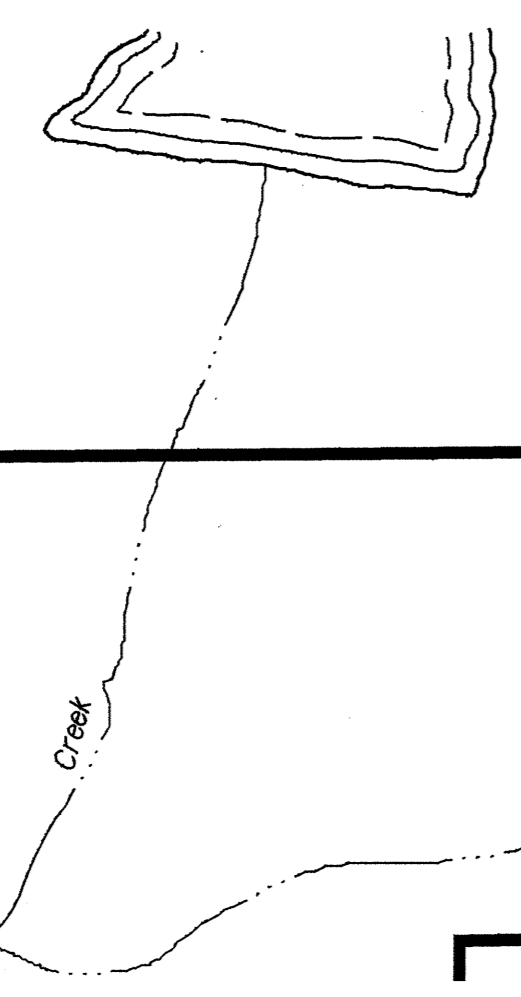
1

14 13
23 24

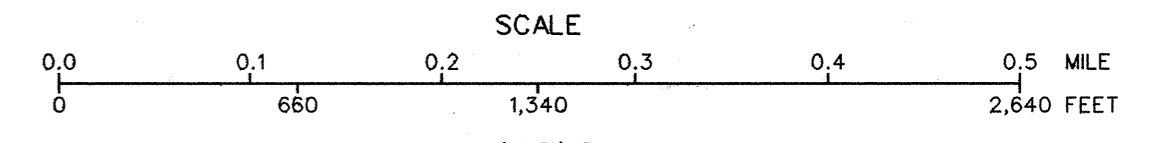
BURLINGTON

TO TISHOMINGO

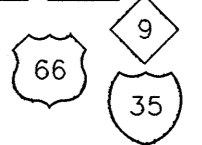
1



STATE OF OKLAHOMA
DEPARTMENT OF TRANSPORTATION
CITY OF
HICKORY
MURRAY COUNTY
1990
POPULATION
77



LEGEND
CORPORATE LIMITS
STATE NUMBERED ROUTES
U.S. NUMBERED ROUTES
INTERSTATE ROUTES



This map indicates those roads known to the Department to be open to public travel. Placement of a road on the map has no relationship to maintenance responsibility by any level of government. Copies of this map are available for public use at nominal cost. Address: OKLAHOMA DEPARTMENT OF TRANSPORTATION REPRODUCTION BRANCH Phone (405) 521-25861 200 N.E. 21st STREET OKLAHOMA CITY, OKLAHOMA 73105-3204

ALL RIGHTS RESERVED

JUNE, 1990

HICKORY, MURRAY CO.