



Office of
GLENNA CRAIG
Payne County Clerk

BID # 2024-21

BRIDGE REPLACEMENT-TRIB TO LONG BRANCH CREEK #197

PAYNE COUNTY DISTRICT 3, RHONDA MARKUM

Vendor and or company representative,

Included in this correspondence you will find information regarding bid specifications, packet information, and instructions per the Payne County Commissioners who are requesting your company submit a bid for the enclosed project or materials.

The enclosed packet has been developed and approved by the Payne County Commissioners', the content of the packet is per their instruction. The Payne County Clerk's office is the facilitator of the bid process and is required to receive and hold all sealed bids per Oklahoma State Statutes to present to the Board of Commissioners in an open session.

If you have any questions, in regards, to the pack content, specifications, and instructions please contact the following:

RHONDA MARKUM, DISTRICT 3 COMMISSIONER- (405) 372-7758

We appreciate your bid and time, in regards, to the process. We look forward to hearing from you.

Kind Regards,

Glenna Craig, Payne County Clerk
State of Oklahoma

All bids can be mailed or emailed to vendors upon request, or can be downloaded for completion from our website:

www.countyclerk.paynecounty.org

CONTACT KYLA MCCOMBS-PAYNE COUNTY PURCHASING AGENT FOR EMAIL OR MAILED BIDS AT:

kmccombs@paynecountyclerk.org

ALL BIDS MUST BE SUBMITTED BACK TO THE PAYNE COUNTY CLERKS OFFICE BY MAIL, OR IN PERSON SEALED BEFORE 9:30 THE DATE OF BID OPENING.

**THERE WILL BE A PRE-BID MEETING HELD SEPTEMBER 19, 2023 AT 10 AM AT THE
PAYNE COUNTY DISTRICT 3 BARN, 506 EXPO CIRCLE SOUTH, STILLWATER, OKLAHOMA.**

Payne County Administration Building • 315 W. 6th, Suite 202 • Stillwater, Oklahoma 74074
405-747-8310 • Fax: 405-747-8304 • countyclerk.paynecounty.org



Office of
GLENNA CRAIG
Payne County Clerk

INVITATION TO BID

The Board of County Commissioners, Payne County, Oklahoma is seeking sealed bids for:
BID # 2024-21

BRIDGE REPLACEMENT-TRIB TO LONG BRANCH CREEK #197

BID # 2024-21

Date Published: **SEPTEMBER 2, 2023**

Bidding Period Closing Date and Hour: **SEPTEMBER 28, 2023 @ 9:30 A.M.**

Sealed Bid Opening Date and Hour: **SEPTEMBER 28, 2023 @ 9:30 A.M.**

Location: "The Gloria Hesser Commissioners Meeting Room" Room 200, Payne County Administration Building.

Address: **315 W. 6th, Ste. 202, Stillwater, OK. 74074**

Requesting Authority: **PAYNE COUNTY DISTRICT 3**

DISTRICT 3 COMMISSIONER, RHONDA MARKUM

PHONE: 405-372-7758

Bid submissions are to be addressed to:

**ATTN: Payne County Purchasing Agent
Payne County Clerk's Office
315 W. 6th, Suite 202
Stillwater, OK 74074**

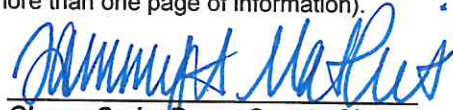
Please review the attached Terms and Conditions pertaining to the submission of this bid.

Please pay particular attention to item (1) of the Terms and Conditions. This item specifies how the bid envelopes are to be identified to prevent inadvertent or premature opening of sealed bids. Your compliance will ensure consideration of your bid by the awarding body. Late bids will not be considered.

The Non-Collusions Affidavit bearing original signature must be notarized and returned with the bid submission.

This packet contains:

1. Invitation to Bid
2. Terms and Conditions for Bidding
3. Affidavit for Filing with Competitive Bid
4. Specifications/Bid forms for desired item(s) (may be more than one page of information).


**Glenna Craig, Payne County Clerk
State of Oklahoma
315 W. 6th, Suite 202
Stillwater, OK 74074**



Office of
GLENN CRAIG
Payne County Clerk

TERMS AND CONDITIONS
THESE ITEMS APPLY TO AND BECOME A PART OF THE BID
NO EXCEPTIONS TO THESE TERMS AND CONDITIONS WILL BE CONSIDERED

1. Bids must be submitted on the included form only. Each bid shall be placed in a separate envelope. Be sure the envelope is completely and properly identified and sealed, showing the bid name and number in the lower left-hand corner.
2. All bids shall be entered on the Bid Form enclosed or a copy thereof. Bids are to be typewritten or in ink. No bidder may withdraw his proposal for a period of thirty (30) days after the date and hour set for the opening of bids.
3. The bidder shall attach the manufacturer's name of the equipment or material to be furnished, type model numbers descriptive bulletins and specifications. All guarantees and warranties should be clearly stated. This data shall be sufficient detail to describe accurately the equipment or material to be furnished. Manufacturer's specifications, in respect to the successful bidder, shall be considered as part of the contract with Payne County.
4. Any exceptions or deviations from written specifications shall be identified in writing and attached to the bid form.
5. The enclosed affidavit for Filing with Competitive Bid **MUST** be returned with the bid.
6. Payne County reserves the right to reject any and all bids and to waive any technicalities in the bidding.
7. Direct purchase of certain items of equipment or material by Payne County is exempt from Federal Excise Tax and Oklahoma Sales Tax. In such cases, the bidder shall quote prices which do not include Federal Excise Tax and Oklahoma Sales Tax.
8. Bid must show number of days required for delivery under normal conditions. Contractor must keep the County advised at all times of the status of the order. For any exception to the delivery date as specified on this order, vendor shall give prior notification and obtain written approval from the Purchasing Agent. Default in promised delivery date or failure to meet specifications, authorizes the County to purchase supplies elsewhere and charge the full increase of cost and handling to defaulting contractor.
9. Bidder agrees to defend and save Payne County from and against all demands, claims costs expense, damage and judgments based upon infringement of any patent to goods specified in this order or the ordinary use or operation of such goods by the County or use or operation of such goods in accordance with the bidder's direction.
10. If the bid requires a written contract, the successful bidders shall execute a written contract with the county within (10) days after submission of the contracts to said bidder.
11. This bid is submitted as a legal offer, and any bid when accepted by the County constitutes a firm contract.
12. **If the bid is \$50,000.00 or greater, Bidder must furnish a bid bond or cashier's check in the amount of 5% of the bid with bid submission.**
13. **If the bid is \$50,000.00 or greater, successful Bidder must be able to bond. (Performance, Maintenance and Payment Bonds)**
14. Successful bidder will be required to furnish their own Workmen's Comp and General Liability Insurance as required by Oklahoma State Law and by Payne County.



Office of
GLENN CRAIG
Payne County Clerk

S.A.&I. 425/1-4040 (2000)

AFFIDAVIT FOR FILING WITH COMPETITIVE BID

STATE OF OKLAHOMA)

)SS

COUNTY OF _____)

_____, of lawful age, being first duly sworn, on oath says, that (s)he is the agent authorized by the bidder to submit the attached bid. Affiant further states that the bidder has not been a party to any collusion among bidders in restraint of freedom of competition by agreement to bid at a fixed price or to refrain from bidding; or with any county official or employee as to quantity, quality or price in the prospective contract, or any other terms of said prospective contract, or in any discussions between bidders and any county official concerning exchange of money or other thing of value for special consideration in the letting of a contract.

Firm: _____

Signed by: _____
(manual signature of undersigned)

Title: _____

Address: _____

City: _____ State: _____

Zip: _____ Tax ID: _____

Telephone () _____ Fax () _____

Subscribed and sworn to before me this _____ day of _____, 20_____.

_____ Notary Public (or Clerk or Judge)

My commission expires: _____

Note:

Each competitive bid submitted to a county, school district or municipality must be accompanied with the above Affidavit as required by 61 Okl.St. Ann. § 138

Payne County Administration Building • 315 W. 6th, Suite 202 • Stillwater, Oklahoma 74074
405-747-8310 • Fax: 405-747-8304 • countyclerk.paynecounty.org

INSTRUCTIONS TO BIDDERS: COMPLETION OF THE DETAILED BID FORM

“Bid A: Steel Material” on BP1 is the lump sum bid to provide the planned quantity of materials listed in the table on sheet BP 2, exclusive of labor.

“Bid B: Labor & Non-Steel Material” on BP1 is the lump sum bid to provide all labor necessary to construct the project as indicated in the plans and specifications, as well as the plan quantity of materials as listed in the table on sheet BP 3. (These materials are included with the Labor bid as opposed to the Material bid to enable steel vendors to bid on materials.)

“Optional Bid Items (Pilot Holes)” on BP1 is the lump sum bid to drill and backfill 12 pilot holes for the abutment piles. Pilot holes are listed as “optional” because they are not anticipated and will only be paid for if rock prevents 20 feet of pile from being driven below ground line (see plan note). Optional Bid Items are considered part of Bid B; the contractor providing services under Bid B will provide the Optional Bid Items if site conditions necessitate use of pilot holes.

Some material quantities have the potential for minor over-runs during construction. For these items, please enter the UNIT price for which ADDITIONAL materials will be provided if planned quantities are insufficient. It is recognized that small material quantities provided after the initial delivery may be more costly to provide (for example, delivering an additional 100 lbs of reinforcing steel may cost more per pound than delivering the first 5,830 lb).

If the “Unit Price...” square is blacked out for an item, there is no potential for over-run and no unit price need be entered (for example, under no circumstances will payment be made for more bridge beams than the planned quantity).

The contractor will not be compensated for additional materials until he provides proof that the original plan quantity of the item(s) for which he is seeking additional compensation has already been provided.

A vendor may choose to submit a bid for both Bids A and B, for Bid A only, or for Bid B only.

All bidders submitting a bid for Bid “B” must be in attendance at the Mandatory Pre-Bid Meeting, to be held on September 19th at 10:00 a.m. Please meet at the District 3 County Barn, at 506 Expo Circle South, Stillwater, OK. Bidders submitting a bid for Bid “A” are encouraged to attend.

BID #2024-21-BRIDGE REPLACEMENT-TRIB. TO LONG BRANCH CREEK #197

Bid A: Steel Material	\$ _____
Bid B: Labor and Non-Steel Material	\$ _____
Total (if Bidding both A & B)	\$ _____
Optional Bid Items (Pilot Holes)	\$ _____

PLEASE INCLUDE THIS SHEET AS THE FIRST SHEET IN YOUR SUBMITTAL.
Optional Bid Items to be provided as part of Bid B if necessitated by site conditions.

DETAILED BID FORM ITEMS

See Instructions to Bidders for additional information.

**BID #2024-21 BRIDGE REPLACEMENT-
TRIB. TO LONG BRANCH CREEK #197 BID "A" PAY ITEMS:
STEEL MATERIAL ONLY, NO LABOR**

Description	Unit	Plan Quantity	Unit Price for Mat'l Over Plan Qty.
HP10x42 Piles	LF	844.0	\$
10 Gauge Galv. Sheet Piling	SY	63.0	\$
W6x20 Posts	LF	140.0	
4 3/4" x 1/2" x 8 7/8" Stiffener Plates	EA	44.0	
5/8" Dia. x 6" Studs	EA	170.0	\$
C10x20 Headers	LF	60.0	\$
C5x9 Channel	LF	100.0	\$
C8x11.5	LF	420.0	\$
C15x33.9 Wing Caps	LF	80.0	\$
3"x3"x1/4" Angle	LF	680.0	\$
6"x4"x5/16" Angle	LF	60.0	\$
Reinforcing Steel	LB	5,830.0	\$
W-Beam Guard Rail	LF	350.0	
Guard Rail Anchor Units (Turn Downs)	EA	4.0	

**BID #2024-21-BRIDGE REPLACEMENT-
 TRIB. TO LONG BRANCH CREEK BID #197 "B" PAY ITEMS:
 LABOR AND NON-STEEL MATERIAL**

Description	Unit	Plan Quantity	Unit Price for Mat'l Over Plan Qty.
Class AA Concrete	CY	39.0	\$
HP 10x42 Piles, Driven ¹	LF	1,294.0	\$
HP 10x42 Piles, Spliced ²	EA	12.0	\$
Riprap	TON	350.0	\$
Project Labor	LSUM	1.0	

¹Price bid per foot for *labor only* to drive additional H-piles if estimated plan quantity is insufficient.

²Price bid per each for *labor only* to splice additional H-piles if necessary.

**BID #2024-21-BRIDGE REPLACEMENT-
 TRIB. TO LONG BRANCH CREEK #197 OPTIONAL BID ITEMS**

Description	Unit	Plan Quantity	Total Bid Price
PILOT HOLE ¹	EA	12.0	\$

¹Pilot holes shall only be drilled if rock is encountered which prevents driving piles a minimum of 20 ft. below ground line. Price bid for pilot holes includes concrete and granular backfill; see plan detail.

PLAN OF PROPOSED
 COUNTY BRIDGE
 TRIBUTARY TO LONG BRANCH CREEK
 LOCAL BRIDGE NO. 197
 PAYNE COUNTY, OKLAHOMA

LOCATION: 60N3300E0530009
 REMOVE BRIDGE NBI: #01055
 CONSTRUCT NBI: _____

INDEX OF SHEETS

SHEET NO.	DESCRIPTION
1.	TITLE SHEET
2.	GENERAL NOTES AND SUMMARY OF PAY QUANTITIES
3.	BRIDGE SECTIONS AND DETAILS
4.	ABUTMENT PLAN AND ELEVATION
5.	GUARDRAIL AND BRIDGE ALIGNMENT DETAIL

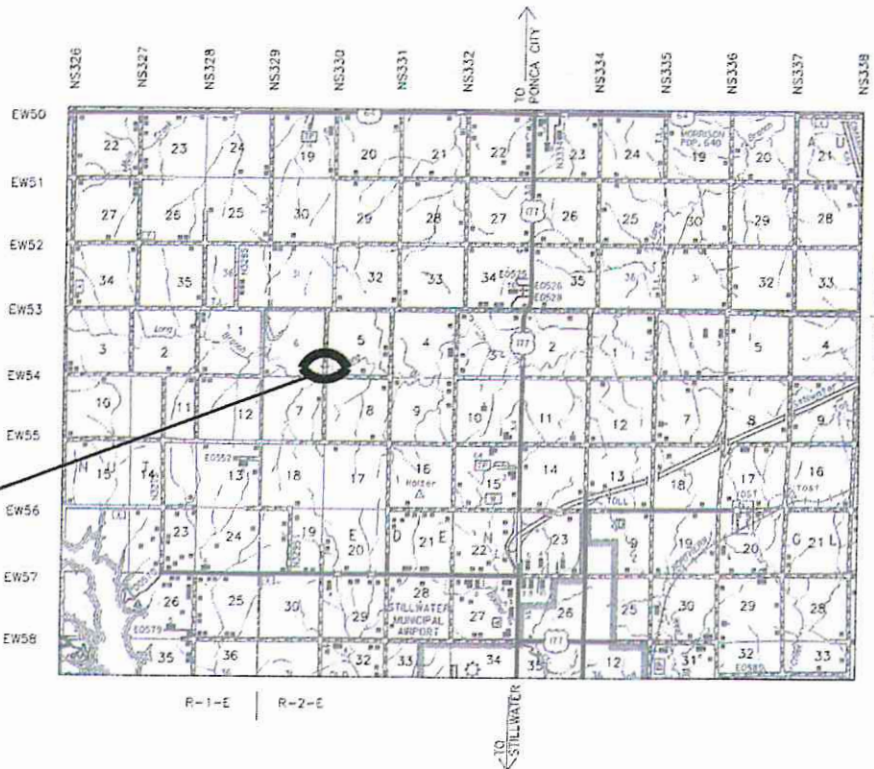


LATITUDE 36° 13' 58.13"
 LONGITUDE 97° 7' 25.53"



- SCALES**
 LAYOUT MAP 1"=10,560'
- CONVENTIONAL SIGNS**
- PROPOSED ROADS
 - SECTION LINES
 - QUARTER SECTION LINES
 - FENCES
 - EXISTING GRADE
 - EXISTING ROADS
 - BASE LINE
 - PROPOSED GRADE
 - COMMUNICATION LINES (EXISTING)
 - POWER LINES (EXISTING)
 - GAS LINE (EXISTING)
 - SANITARY SEWER LINES (EXISTING)
 - WATER LINES (EXISTING)
 - COMMUNICATION LINES (PROPOSED)
 - POWER LINES (PROPOSED)
 - GAS LINE (PROPOSED)
 - SANITARY SEWER LINES (PROPOSED)
 - WATER LINES (PROPOSED)
 - BUILDINGS
 - DRAINAGE STRUCTURES (EXISTING)
 - DRAINAGE STRUCTURES (PROPOSED)
 - RIGHT-OF-WAY LINES (EXISTING)
 - RIGHT-OF-WAY LINES (PROPOSED)
 - RIGHT-OF-WAY FENCE
 - FLOWLINE (EXISTING)
 - FLOWLINE (PROPOSED)
 - TOE OF SLOPE (EXISTING)
 - TOE OF SLOPE (PROPOSED)
 - CITY LIMITS
 - LANDSCAPE

BRIDGE LOCATION
 60N3300E0530009



BRIDGE LENGTH 60 FEET

APPROVED
 PAYNE COUNTY COMMISSIONER

DIST. NO. 3

ATTEST

COUNTY CLERK

DATE: _____

DATE: _____

PREPARED BY:
 CEC CORPORATION
 CA32 PE/LS 6/30/2024
 OKLAHOMA CITY, OKLAHOMA

CEC

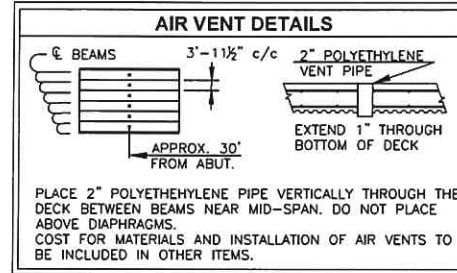
Aaron Finley
 AARON FINLEY
 OKLA. REG. NO. 24264

8/22/23
 DATE

ENGINEER PROFESSIONAL LICENSE
 AARON FINLEY
 24264
 OKLAHOMA

BRIDGE PAY QUANTITIES			
60' X 24'-7" I-BEAM SPAN - LOCAL BRIDGE 197			
DESCRIPTION	UNITS	QUANTITY	
HP10x42	(2)	LF	844
10 GAUGE GALV. SHEET PILING	(3)	SY	63
W6x20 (RAIL POSTS)	(4)	LF	140
4 1/4" x 1/2" x 8 1/2" STIFFENER PLATES		EA	44
3/8" DIA. x 6" STUDS		EA	170
C10x20 (DECK HEADERS)	(5)	LF	60
C5x9 (SHEAR CONNECTORS)	(6)	LF	100
C8x11.5 (BRACING & DECK SIDE FORMS)	(7)	LF	420
C15x33.9	(8)	LF	80
3"x3"x1/2" ANGLE	(9)	LF	680
6"x4"x3/8" ANGLE	(10)	LF	60
REINFORCING STEEL	(11)(12)	LB	5,830
W-BEAM GUARD RAIL	(13)	LF	350
GUARD RAIL ANCHOR UNITS (TURN DOWNS)	(14)	EA	4
CLASS "AA" CONCRETE	(15)	CY	39
RIPRAP	(16)	TON	350
REMOVAL OF EXISTING BRIDGE STRUCTURE		LSUM	1
OPTIONAL BID ITEMS			
PILOT HOLES	(17)	EA	12
NON-PARTICIPATING PAY ITEMS			
60' W27x94 BEAMS		EA	7
HP10x42		LF	450
10 GAUGE GALV. SHEET PILING		SY	300
1.5C20 DECK FORMS		SY	1,185

- W27x94 BASED ON 50 KSI STEEL.
- 1294 LF TOTAL (COUNTY TO PROVIDE 450 LF), BASED ON 50' EACH FOR 12 SEAT PILES, 40' EACH FOR 16 WING PILES, AND TWO 26'-6" CAPS. THE REQUIRED REACTION FOR EACH ABUTMENT PILE IS 41.1 TONS. THE GATES EQUATION, AS GIVEN IN SECTION 514.04.E(2) OF THE ODOT STANDARD SPECIFICATIONS, SHALL BE USED TO DETERMINE THE AXIAL LOAD RESISTANCE OF THE DRIVEN FOUNDATION PILES.
- NET QUANTITY WITH NO ALLOWANCE FOR WASTE. 363 SY TOTAL QUANTITY, COUNTY TO PROVIDE 300 SY. DECK FORMS SHALL BE A VULCRAFT 1.5C20 AS FURNISHED BY PAYNE COUNTY. NET QUANTITY; SIDE AND END LAPS NOT INCLUDED.
- 126'-8" NET QUANTITY, 140 LF GROSS QUANTITY ASSUMES 7-20' PIECES.
- 49'-2" NET QUANTITY, 60 LF GROSS QUANTITY ASSUMES 3-20' PIECES.
- 87'-6" NET QUANTITY, 100 LF GROSS QUANTITY ASSUMES 5-20' PIECES. ALTERNATIVELY, 3/4" DIAMETER SHEAR STUDS, 3 ACROSS THE FLANGE, MAY BE INSTALLED EVERY 18" ALONG THE INTERIOR BEAMS FOR A TOTAL OF 600 STUDS.
- 416'-0" NET QUANTITY, 420 LF GROSS QUANTITY ASSUMES 21-20' PIECES.
- 76' NET QUANTITY, 80' GROSS QUANTITY ASSUMES 4-20' PIECES.
- BASED ON 329'-4" NET LENGTH FOR 76 CROSS BRACES 4'-4" LONG AND 340'-0" NET LENGTH FOR 102 DECK SUPPORTS 3'-4" LONG. GROSS QUANTITY OF 680 LF ASSUMES 34-20' PIECES.
- 49'-3" NET QUANTITY, 60 LF GROSS QUANTITY ASSUMES 3-20' PIECES.
- SEE REINFORCING STEEL SUMMARY FOR SIZES AND LENGTHS.
- PRICE BID TO INCLUDE SLAB BOLSTERS TO BE PLACED AT NO MORE THAN 4 FT CENTERS. SLAB BOLSTERS SHOULD BE 5'-0" IN LENGTH WITH 5" LEG SPACING AND SHALL HAVE A CLASS 1 PLASTIC PROTECTED OR CLASS 2 TYPE B STAINLESS STEEL PROTECTED FINISH. ESTIMATED QUANTITY 64 1" BOLSTERS (PLACED TRANSVERSELY TO SUPPORT BL BARS) AND 84 1-1/2" BOLSTERS (PLACED TRANSVERSELY ATOP BL BARS TO SUPPORT TL BARS).
- CONSISTS OF 87'-6" OF DOUBLE W-GUARD RAIL BEAM MOUNTED FRONT TO BACK ON EACH SIDE OF THE STRUCTURE AND ALL NECESSARY HARDWARE TO BOLT TO POSTS AND SPLICE SECTIONS TOGETHER.
- CONSISTS OF 25' GUARD RAIL ELEMENT TWISTED 90 DEGREES TO GROUND AND ALL NECESSARY HARDWARE AND FOOTING.
- CONTRACTOR SHALL BE RESPONSIBLE FOR CONCRETE TESTING; 1 SET OF CYLINDERS SHALL BE TESTED.
- RIPRAP TO BE PLACED AROUND ABUTMENTS AND WINGS 18 INCHES THICK, SEE TABLE 713:1 OF THE ODOT STANDARD SPECIFICATIONS.
- A MINIMUM OF 20 FEET OF PILE SHALL BE DRIVEN BELOW THE GROUND LINE. IF ROCK IS ENCOUNTERED WHICH PREVENTS 20 FEET OF PILE FROM BEING DRIVEN, PILOT HOLES SHALL BE DRILLED IN THE ROCK AS SHOWN IN "ABUTMENT PILE PILOT HOLE DETAIL". PILES SHALL STILL BE DRIVEN INTO ROCK UNTIL THE REQUIRED PILE BEARING CAPACITY IS REACHED. THE BOTTOM FIVE FEET OF THE PILOT HOLE SHALL BE BACKFILLED WITH CONCRETE; ANY REMAINING PILOT HOLE DEPTH SHALL BE BACKFILLED WITH GRANULAR MATERIAL. COST OF CONCRETE AND GRANULAR MATERIAL SHALL BE INCLUDED IN PRICE BID FOR PILOT HOLES. AN INTERIOR ABUTMENT PILE SHALL BE DRIVEN FIRST. IF SHALLOW ROCK IS ENCOUNTERED THE PILE NEED NOT BE REMOVED; IT SHALL BE CUT OFF AT THE APPROPRIATE HEIGHT AND PILOT HOLES SHALL BE DRILLED FOR ALL REMAINING PILES.

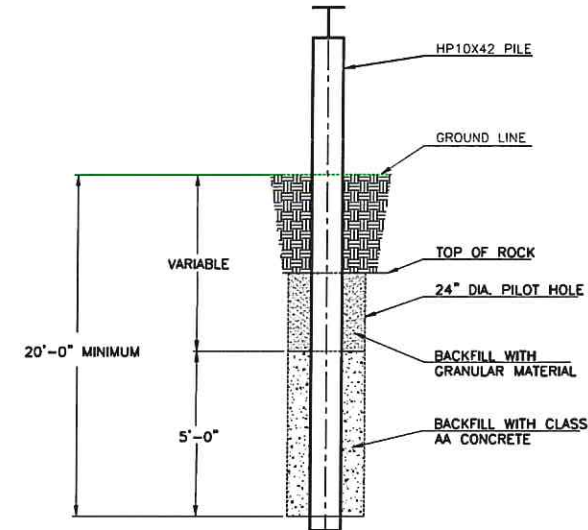


NOTE:
PAYNE COUNTY WILL ALSO PERFORM FINAL BRIDGE ABUTMENT BACKFILL AND APPROACH ROADWAY SURFACING. CONTRACTOR TO COORDINATE WITH PAYNE COUNTY FOR PLACEMENT OF APPROACH GUARD RAIL POSTS.

NON-PARTICIPATING PAY ITEMS TO BE FURNISHED BY PAYNE COUNTY. PAYNE COUNTY SHALL DELIVER NON-PARTICIPATING MATERIALS TO THE BRIDGE SITE FOR USE BY THE CONTRACTOR. FOR ITEMS APPEARING AS BOTH PARTICIPATING AND NON-PARTICIPATING (SUCH AS HP10x42), THE PARTICIPATING PORTION SHALL BE FURNISHED AND INSTALLED BY THE CONTRACTOR; THE NON-PARTICIPATING PORTION WILL BE FURNISHED BY PAYNE COUNTY AND INSTALLED BY THE CONTRACTOR.

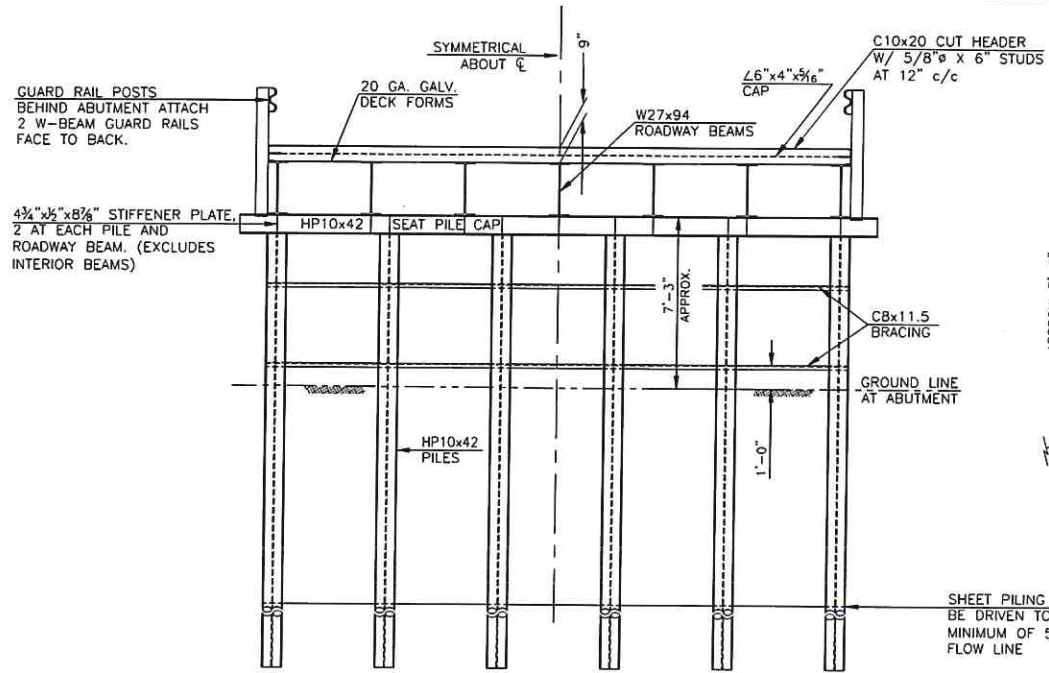
COST OF EXCAVATION REQUIRED FOR ABUTMENT CONSTRUCTION TO BE INCLUDED IN OTHER ITEMS OF WORK.

DESIGN DATA	
CONCRETE: CLASS "AA"	4,000 psi
REINFORCING STEEL: (Gr. 60)	60,000 psi
STRUCTURAL STEEL:	50,000 psi
LF D OPERATING RATING:	H 51.0 tons
NOTE: MINIMUM COMPRESSIVE STRENGTH FOR CLASS AA CONCRETE SHALL BE 4,000 P.S.I. AT 28 DAYS.	

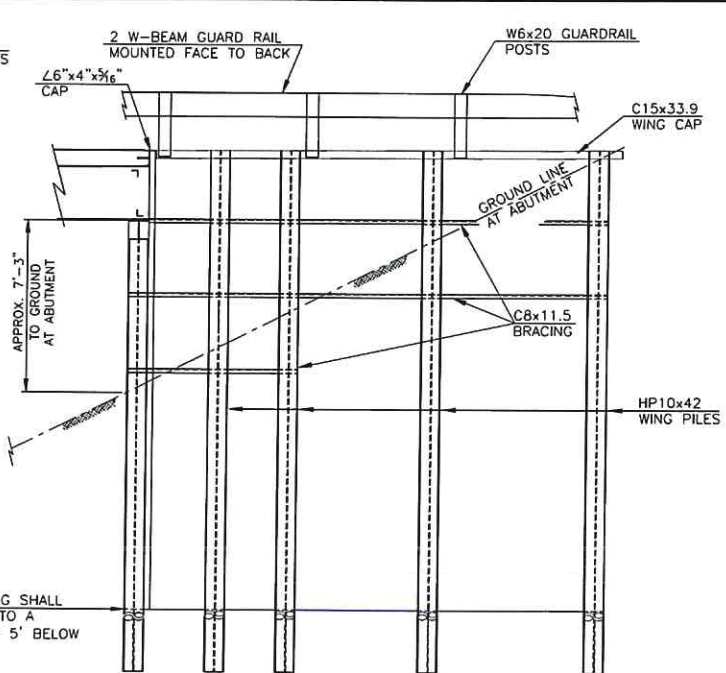


ABUTMENT PILE PILOT HOLE DETAIL

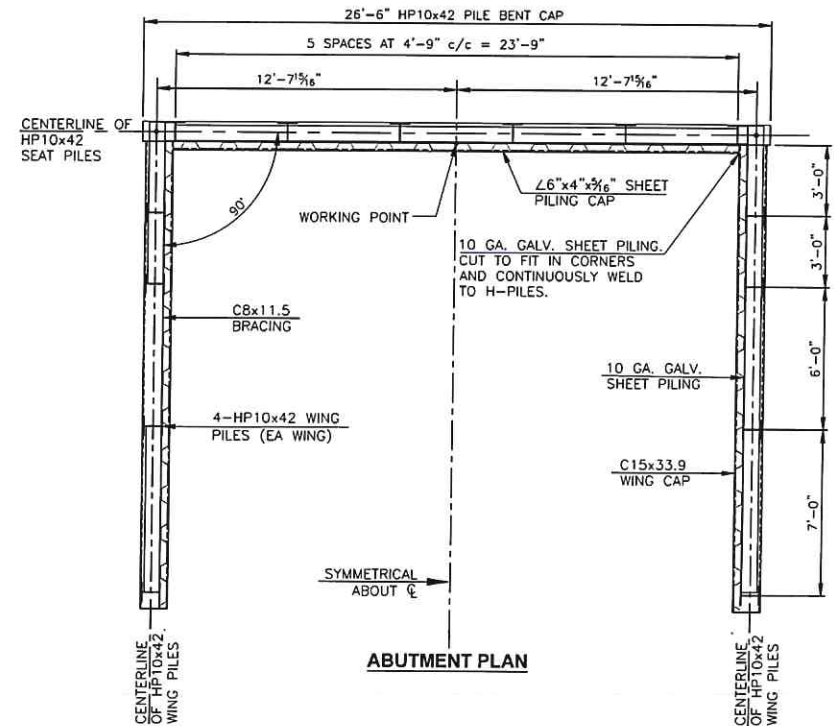
DESIGN	A.F.	LONG BRANCH CREEK	PAYNE COUNTY
DRAWN	R.L.P. 5/18/22	GENERAL NOTES AND SUMMARY OF PAY QUANTITIES	
SHEET NO. 2			



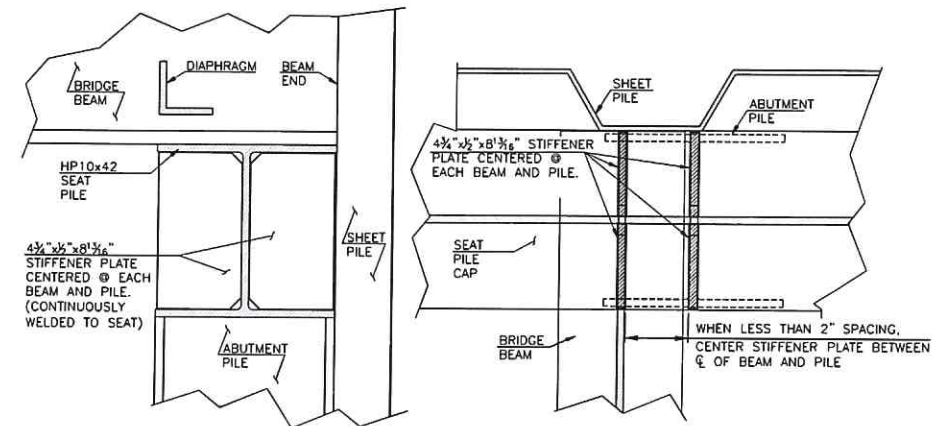
ABUTMENT ELEVATION




WING ELEVATION



ABUTMENT PLAN

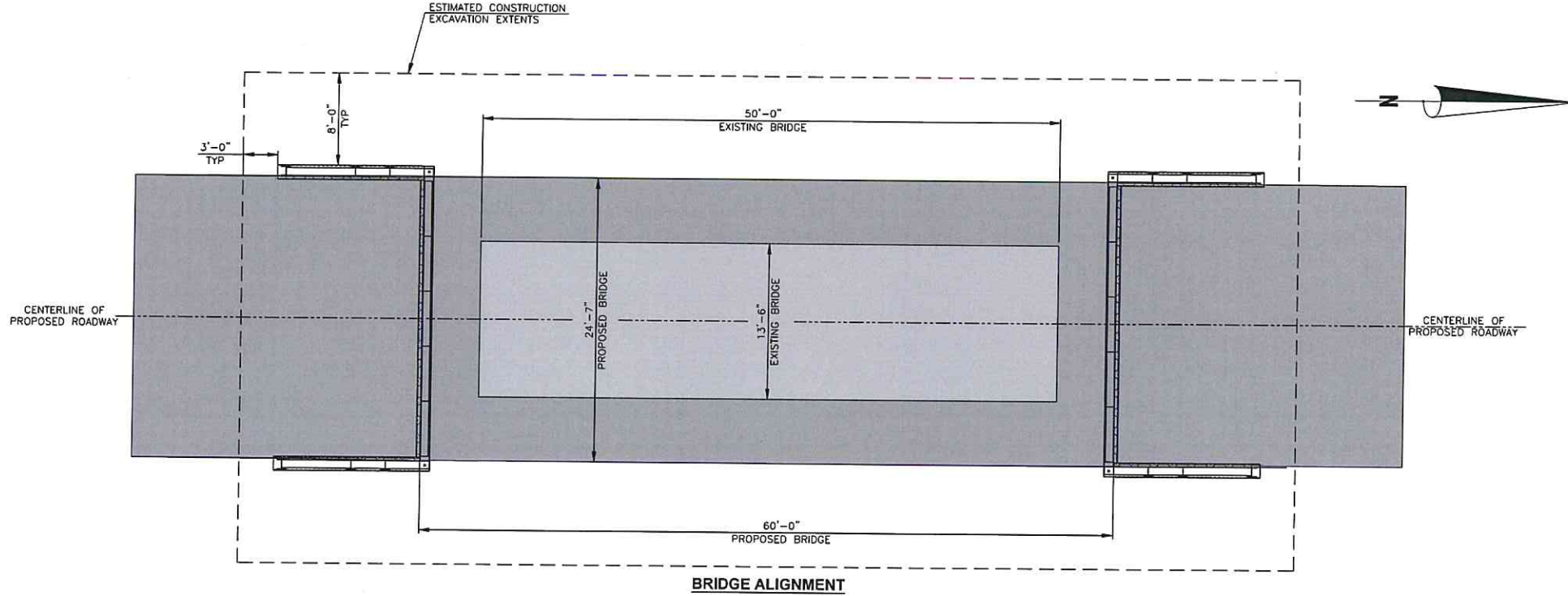
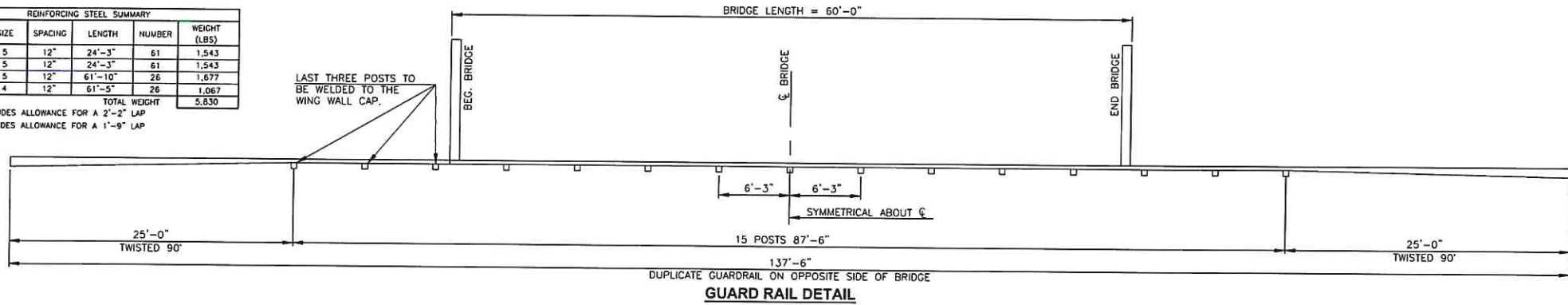


STIFFENER PLATE ELEVATION AND PLAN VIEW DETAILS

DESIGN	A.F.	LONG BRANCH CREEK	PAYNE COUNTY
DRAWN	R.L.P.	5/18/72	
		ABUTMENT PLAN AND ELEVATION	
SHEET NO. 4			

REINFORCING STEEL SUMMARY					
MARK	SIZE	SPACING	LENGTH	NUMBER	WEIGHT (LBS)
TT	5	12"	24'-3"	61	1,543
BT	5	12"	24'-3"	61	1,543
BL	5	12"	61'-10"	26	1,677
TL	4	12"	61'-5"	26	1,067
TOTAL WEIGHT					5,830

- ① QUANTITY INCLUDES ALLOWANCE FOR A 2'-2" LAP
- ② QUANTITY INCLUDES ALLOWANCE FOR A 1'-9" LAP



DESIGN	A.F.	LONG BRANCH CREEK	PAYNE COUNTY
DRAWN	R.L.P.	5/18/22	
		GUARDRAIL AND BRIDGE ALIGNMENT DETAIL	
			SHEET NO. <u>5</u>