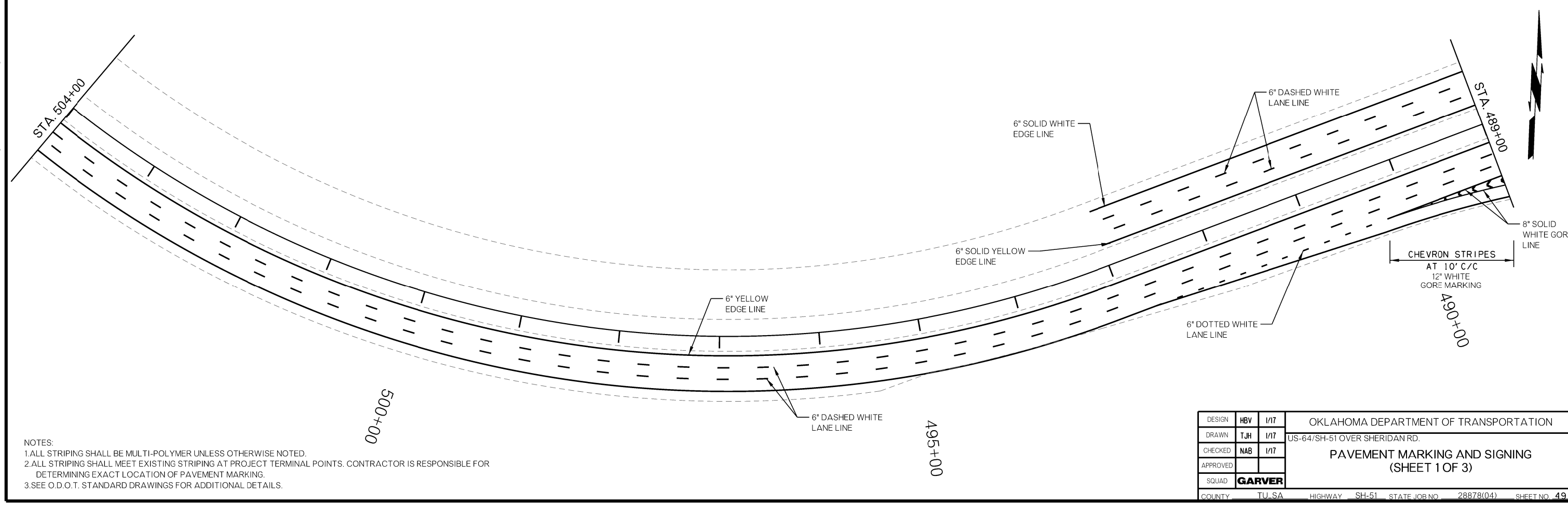
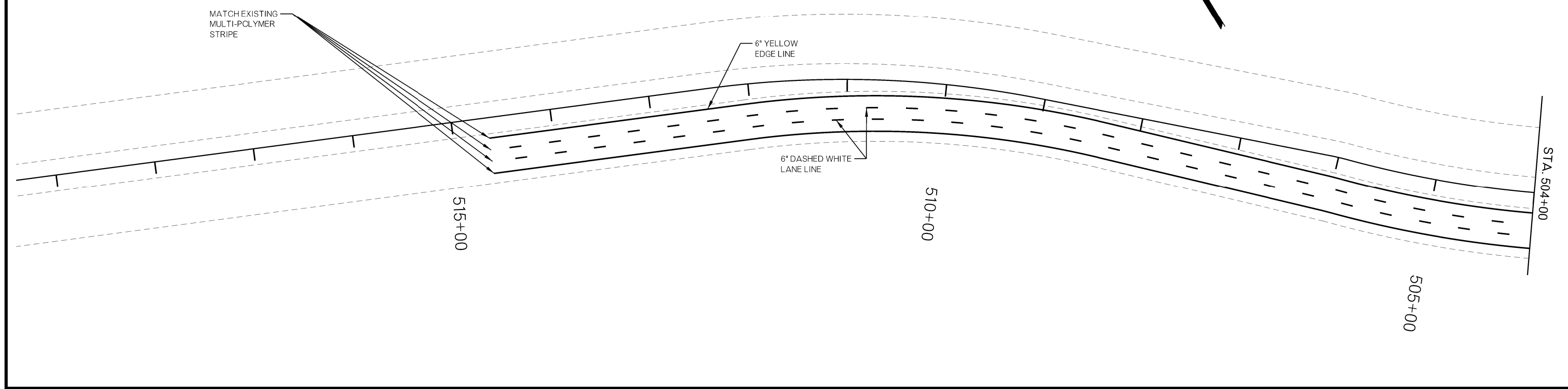


FED. ROAD DIST. NO.	STATE	JOB PIECE NO.	FISCAL YEAR	SHEET NO.	TOTAL SHEETS
6	OKLA.	28878(04)			

DESCRIPTION	REVISIONS	DATE



- NOTES:
1. ALL STRIPING SHALL BE MULTI-POLYMER UNLESS OTHERWISE NOTED.
 2. ALL STRIPING SHALL MEET EXISTING STRIPING AT PROJECT TERMINAL POINTS. CONTRACTOR IS RESPONSIBLE FOR DETERMINING EXACT LOCATION OF PAVEMENT MARKING.
 3. SEE O.D.O.T. STANDARD DRAWINGS FOR ADDITIONAL DETAILS.

DESIGN	HBV	1/17	OKLAHOMA DEPARTMENT OF TRANSPORTATION US-64/SH-51 OVER SHERIDAN RD. PAVEMENT MARKING AND SIGNING (SHEET 1 OF 3)
DRAWN	TJH	1/17	
CHECKED	NAB	1/17	
APPROVED			
SQUAD	GARVER		
COUNTY	TU.SA	HIGHWAY	SH-51
		STATE JOB NO.	28878(04)
		SHEET NO.	49

9:44:07 AM L:\2012\12037096 - 000T EC-144 Task Order 6\Drawings\28878(04)_SS_001.dgn 6/2/2017