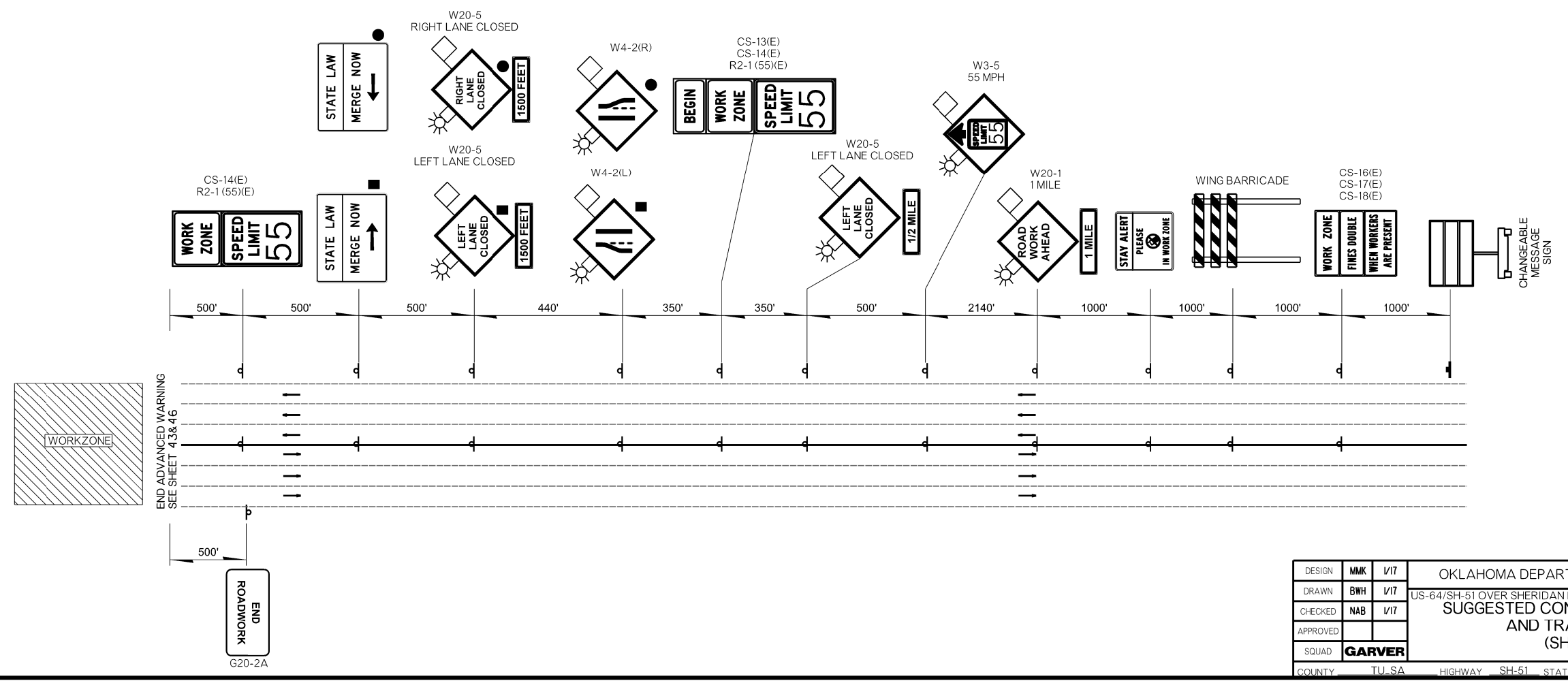


NOTE:
 ■ SIGNS TO BE USED DURING PHASE ONE CONSTRUCTION
 ● SIGNS TO BE USED DURING PHASE TWO CONSTRUCTION



DESIGN			OKLAHOMA DEPARTMENT OF TRANSPORTATION		
MMK	V/17		US-64/SH-51 OVER SHERIDAN RD.		
DRAWN			SUGGESTED CONSTRUCTION SEQUENCE AND TRAFFIC CONTROL (SHEET 1 OF 9)		
BWH	V/17				
CHECKED					
NAB	V/17				
APPROVED					
SQUAD			GARVER		
COUNTY	TU, SA	HIGHWAY	SH-51	STATE JOB NO.	28878(04)
		SHEET NO.	40		

6/2/2017 9:42:24 AM L:\202\12037096 - 000T EC-414 Task Order 6\Drawings\28878(04)_TC_001.dgn