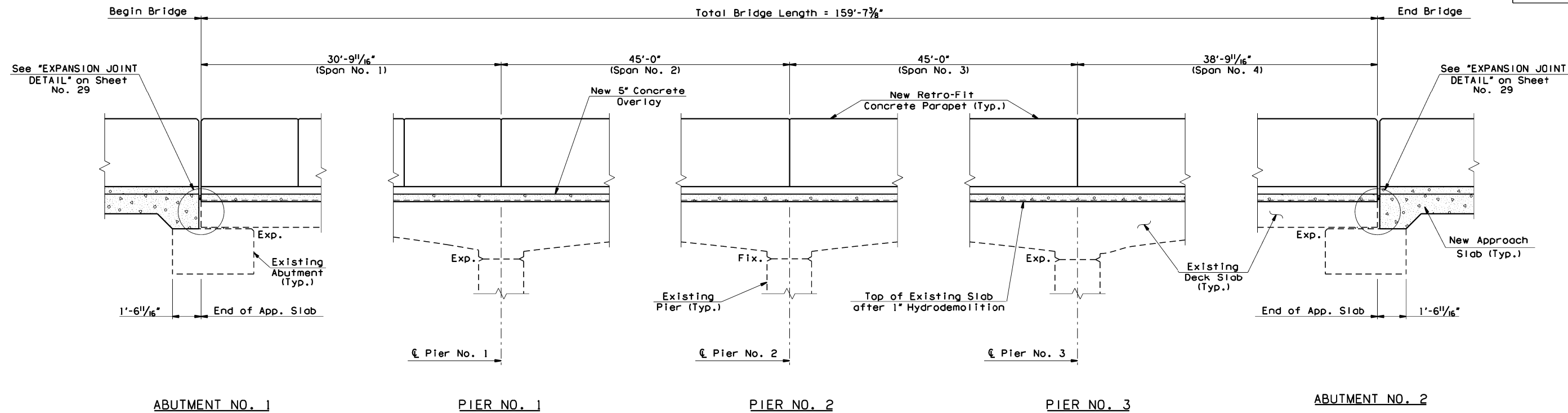
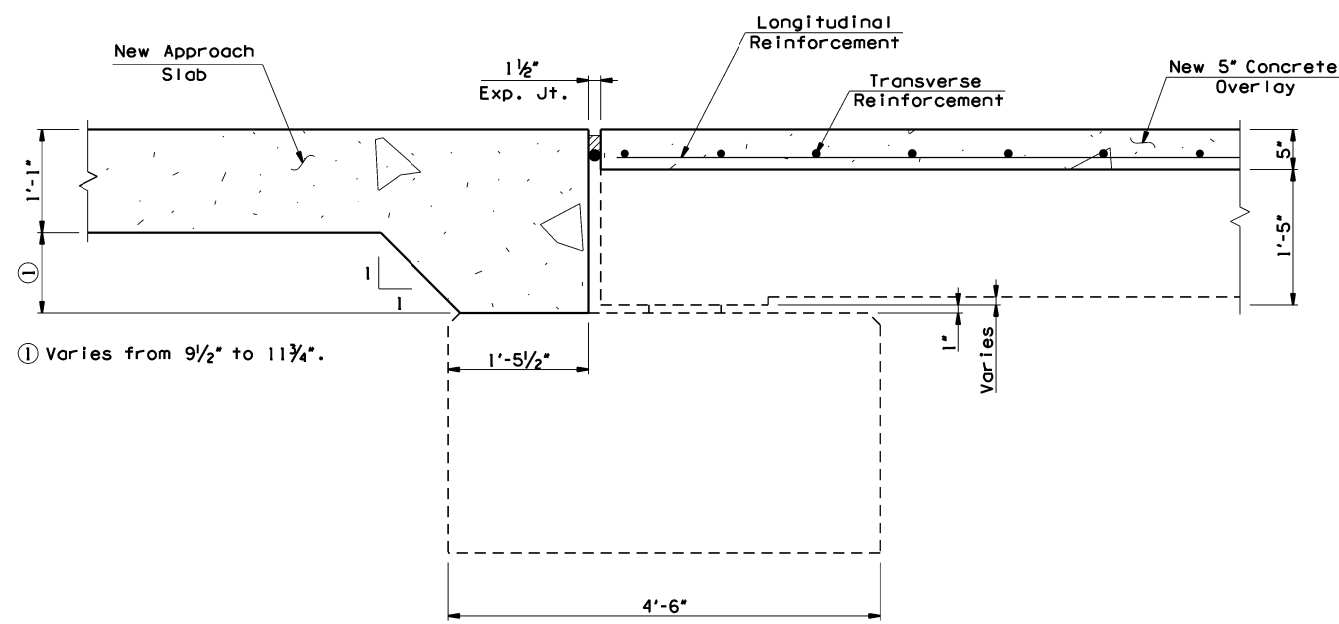


All information included in these plans is based on the existing As-Built and surveyed data. It is solely the Contractor's responsibility to accurately verify this information prior to any demolition or construction. For additional information, see the General Notes "VERIFICATION OF EXISTING CONDITIONS", "SURVEYING AND CONSTRUCTION STAKING", & "ESTABLISHMENT OF VERTICAL GEOMETRY" on Sheet No. 3.

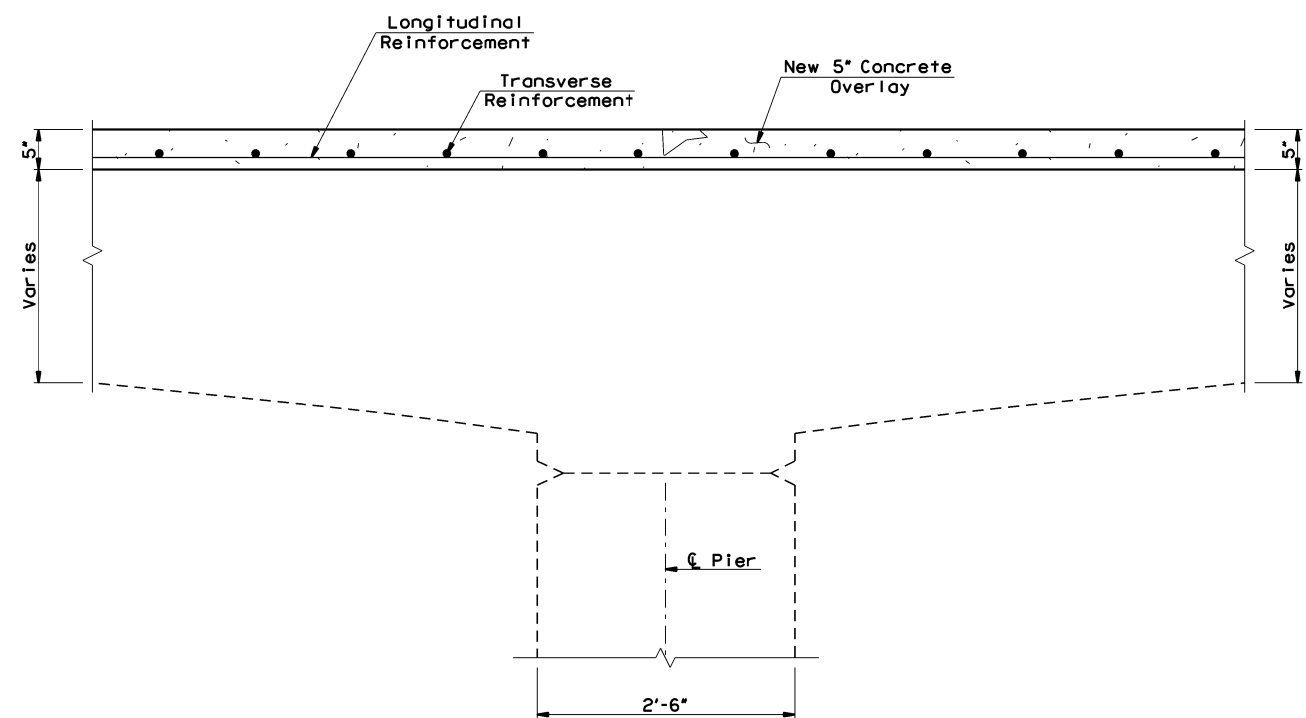
OKLAHOMA DEPARTMENT OF TRANSPORTATION						
FED. ROAD DIST. NO.	STATE	JOB PIECE NO.	FISCAL YEAR	SHEET NO.	TOTAL SHEETS	
6	OKLA.	28878(04)				
DESCRIPTION		REVISIONS	DATE			



**LONGITUDINAL SECTION**  
(All dimensions shown are along  $\perp$  Slab)  
(Do not groove within 6" of any construction joint)



**SECTION THRU EXPANSION JOINT AT ABUTMENT NOS. 1 & 2**  
(All dimensions shown are perpendicular to abutment)



**SECTION THRU CONTINUOUS SLAB AT PIER NOS. 1 - 3**  
(All dimensions shown are perpendicular to pier)

US-64/SH-51 EB OVER SHERIDAN RD. BRIDGE "B"		TULSA COUNTY	DESIGN	JGS	6/15
			DETAIL	SJL	9/16
			CHECK	BRT	12/16
<b>SUPERSTRUCTURE DETAILS (SHEET 3 OF 5)</b>					
<b>GARVER</b>					
STATE OF OKLAHOMA		DEPARTMENT OF TRANSPORTATION			
		JOB PIECE NO. 28878(04)		SHEET NO. 31	

6/2/2017 9:40:14 AM L:\2012\12037096 - 000T EC-144 Task Order 6\Drawings\BRIDGE\jp28878(04)\_b-supers3.dgn