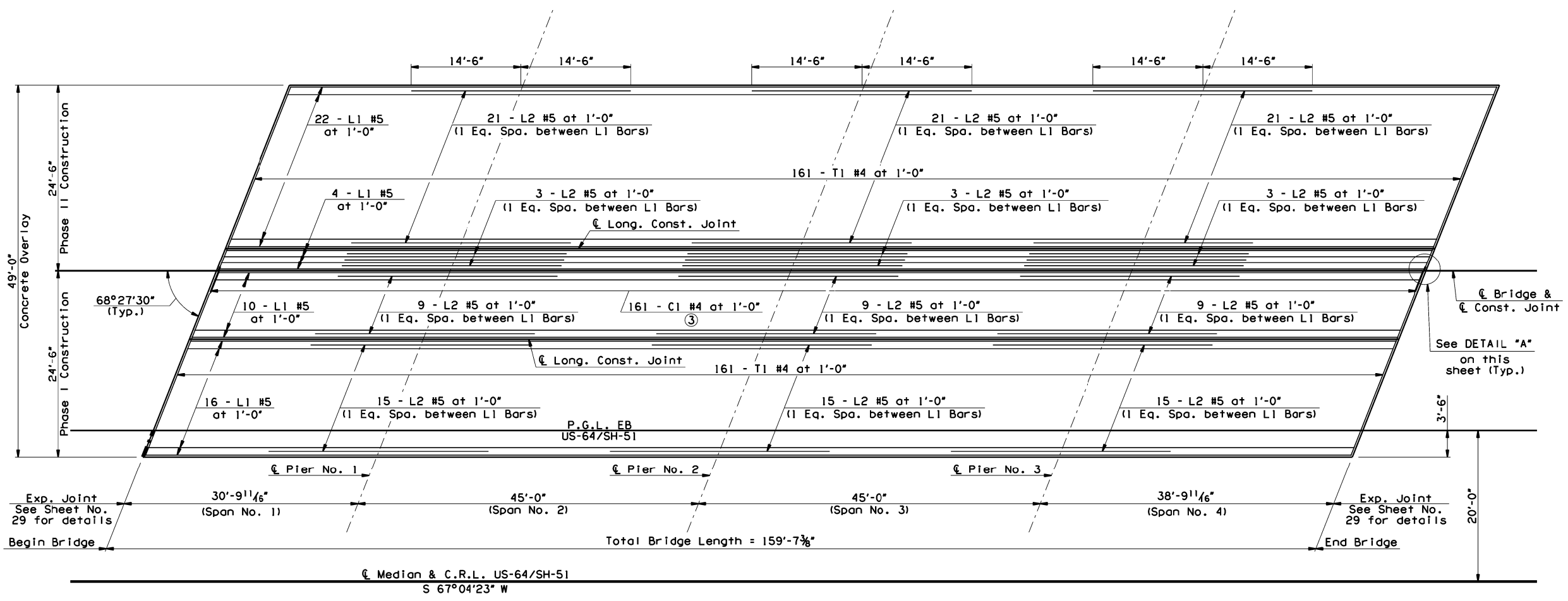


All information included in these plans is based on the existing As-Built and surveyed data. It is solely the Contractor's responsibility to accurately verify this information prior to any demolition or construction. For additional information, see the General Notes "VERIFICATION OF EXISTING CONDITIONS", "SURVEYING AND CONSTRUCTION STAKING", & "ESTABLISHMENT OF VERTICAL GEOMETRY" on Sheet No. 3.

OKLAHOMA DEPARTMENT OF TRANSPORTATION					
FED. ROAD DIST. NO.	STATE	JOB PIECE NO.	FISCAL YEAR	SHEET NO.	TOTAL SHEETS
6	OKLA.	28878(04)			
DESCRIPTION		REVISIONS	DATE		



NOTES:
 Sawn and sealed longitudinal joint locations to match location of existing construction joints. Contractor to verify all dimensions.
 Retro-Fit Parapet reinforcing bars not shown for clarity. See Sheet Nos. 32 & 33 for details.



**SUPERSTRUCTURE BAR LIST
PHASE I CONSTRUCTION**

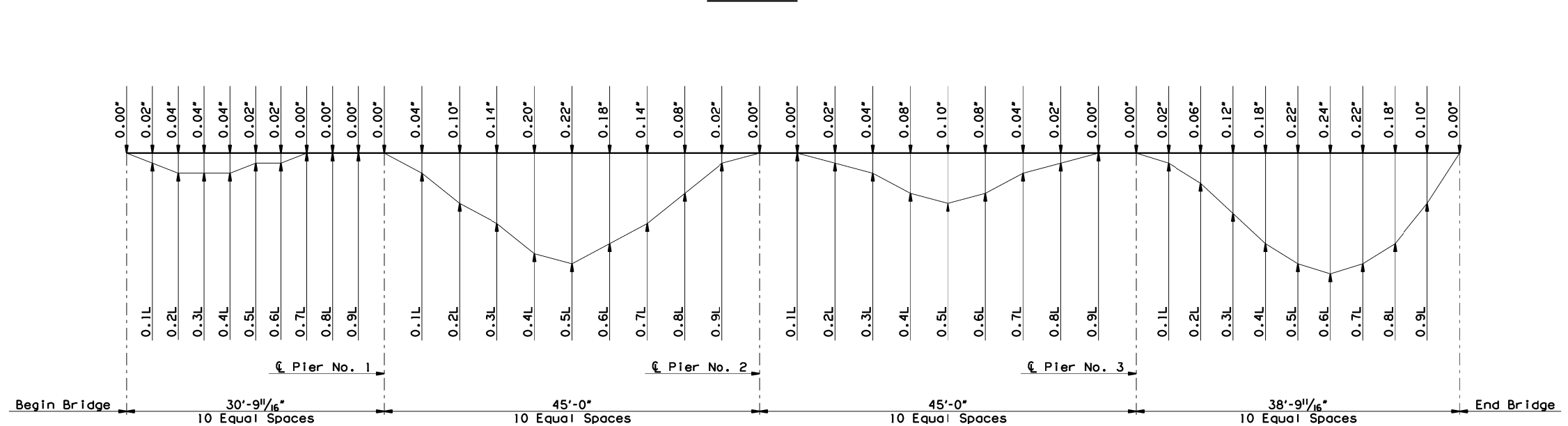
MARK	SIZE	NO.	FORM	LENGTH
EPOXY COATED REINFORCING STEEL				
L1	#5	26	STR.	164'-3"
L2	#5	72	STR.	29'-0"
PV1	#6	322	BENT	4'-7"
PV2	#6	162	STR.	4'-1"
T1	#4	161	STR.	26'-2"

**SUPERSTRUCTURE BAR LIST
PHASE II CONSTRUCTION**

MARK	SIZE	NO.	FORM	LENGTH
EPOXY COATED REINFORCING STEEL				
C1	#4	161	STR.	2'-0"
L1	#5	26	STR.	164'-3"
L2	#5	72	STR.	29'-0"
PV1	#6	322	BENT	4'-7"
PV2	#6	162	STR.	4'-1"
T1	#4	161	STR.	26'-2"

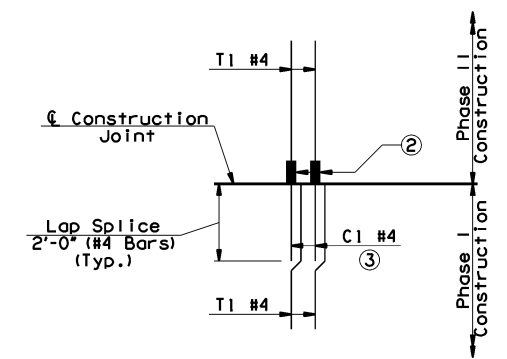
① Includes Two 2'-6" Lap Lengths.

SLAB PLAN



DEAD LOAD DEFLECTION DIAGRAM

NOTE:
 The Dead Load Deflection shown above at the tenth points are the initial deflections due to Slab Overlay + Retro-Fit Concrete Parapet. Deflections shall be taken into consideration in pouring the Slab Overlay.



DETAIL "A"

- Install Mechanical Reinforcing Bar Coupler (Epoxy Coated) in accordance with Section 511.04.C.3. Installation shall follow the Manufacturer's recommendations. Couplers shall be attached to: T1 #4
- Splice the following bars:
 T1 Bars with C1 Bars (Phase I Construction)
 Lap the following bars:
 C1 Bars with T1 Bars (Phase II Construction)

US-64/SH-51 EB OVER SHERIDAN RD. BRIDGE "B"		TULSA COUNTY	DESIGN: JGS 6/15
SUPERSTRUCTURE DETAILS (SHEET 2 OF 5)		CHECK: BRT 12/16	DESIGN: JGS 6/15
STATE OF OKLAHOMA		DEPARTMENT OF TRANSPORTATION	SHEET NO. 30

6/2/2017 9:39:59 AM L:\2021\2037096 - 000T EC-414 Task Order 6\Drawings\BRIDGE\p28878(04).b-supers2.dgn