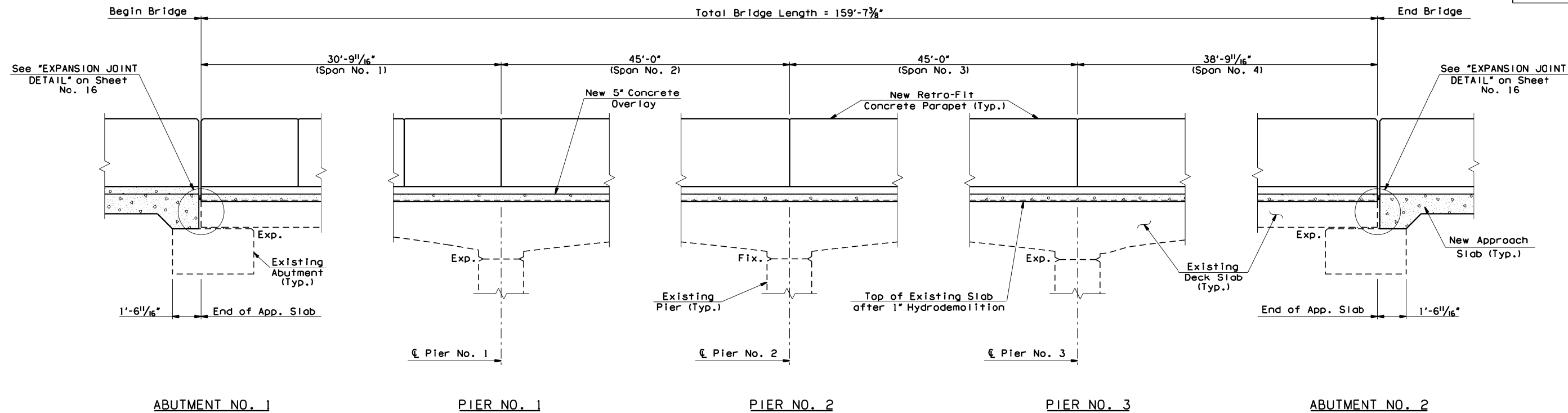
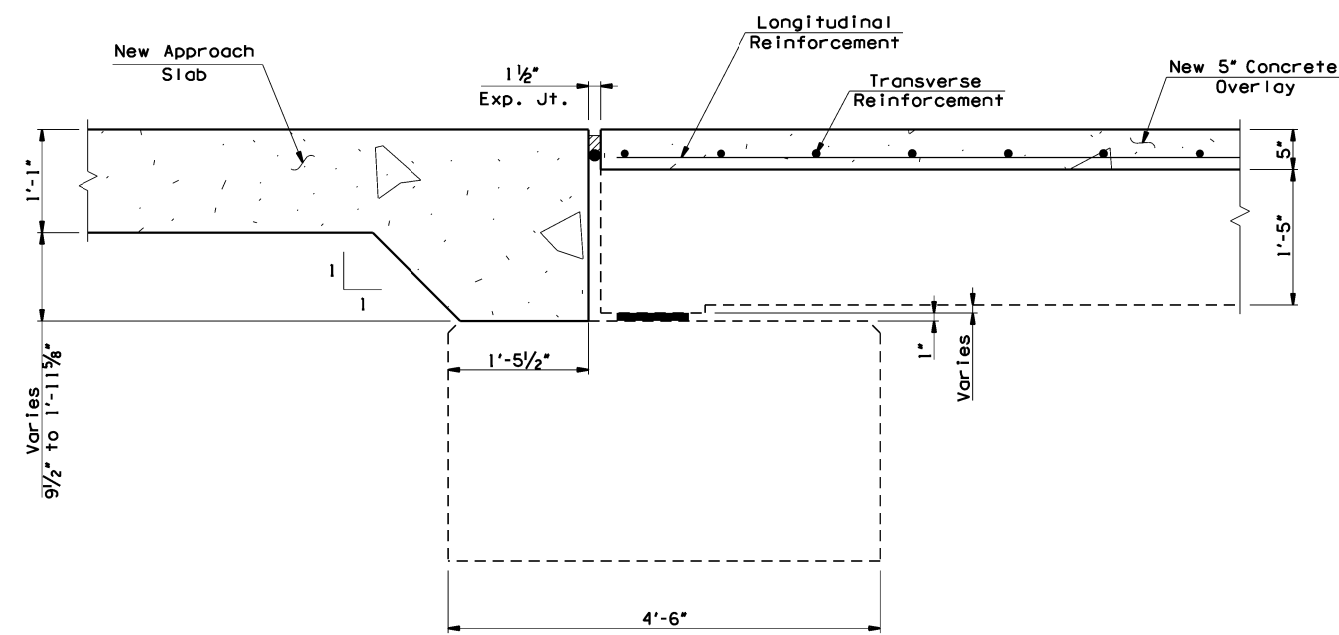


All information included in these plans is based on the existing As-Built and surveyed data. It is solely the Contractor's responsibility to accurately verify this information prior to any demolition or construction. For additional information, see the General Notes "VERIFICATION OF EXISTING CONDITIONS", "SURVEYING AND CONSTRUCTION STAKING", & "ESTABLISHMENT OF VERTICAL GEOMETRY" on Sheet No. 3.

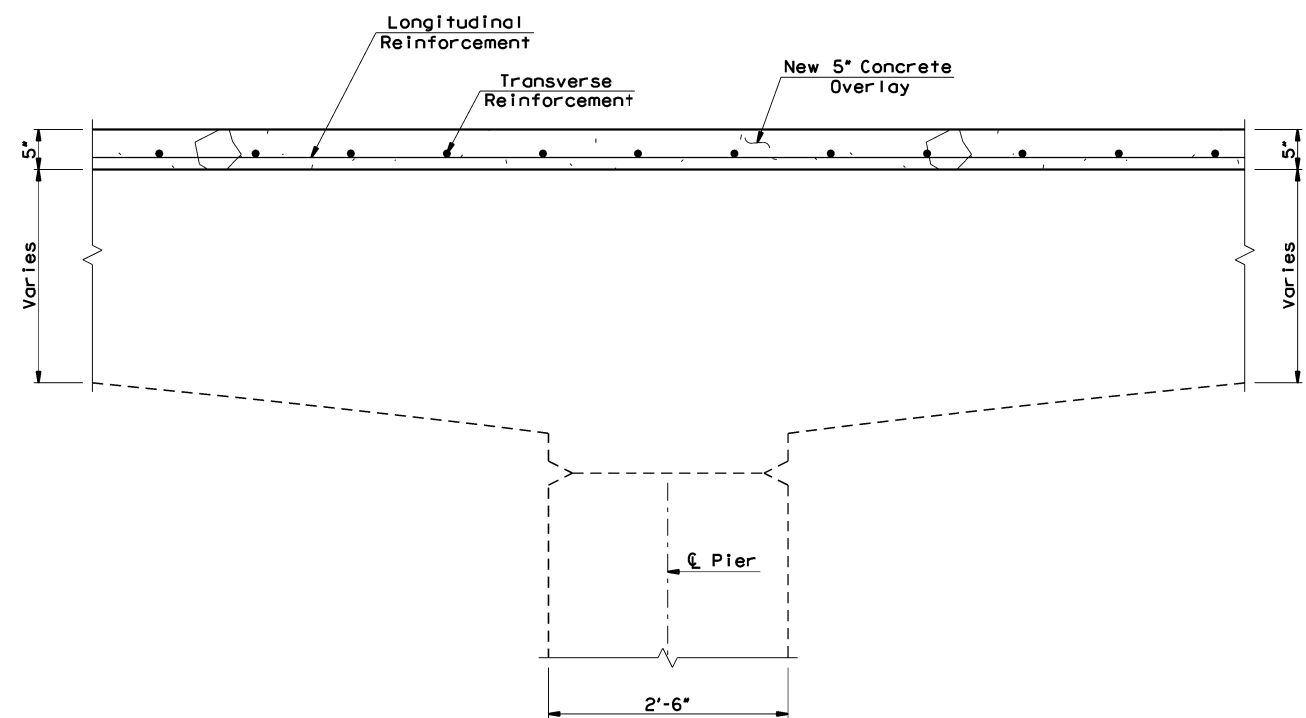
OKLAHOMA DEPARTMENT OF TRANSPORTATION					
FED. ROAD DIST. NO.	STATE	JOB PIECE NO.	FISCAL YEAR	SHEET NO.	TOTAL SHEETS
6	OKLA.	28878(04)			
DESCRIPTION		REVISIONS		DATE	



LONGITUDINAL SECTION
 (All dimensions shown are along ϵ Slab)
 (Do not groove within 6" of any construction joints)



SECTION THRU EXPANSION JOINT AT ABUTMENT NOS. 1 & 2
 (All dimensions shown are perpendicular to abutment)



SECTION THRU CONTINUOUS SLAB AT PIER NOS. 1 - 3
 (All dimensions shown are perpendicular to pier)

US-64/SH-51 WB OVER SHERIDAN RD. TULSA COUNTY		DESIGN	JGS	6/15
BRIDGE "A"		DETAIL	SJL	9/16
		CHECK	BRT	12/16
GARVER				
STATE OF OKLAHOMA	DEPARTMENT OF TRANSPORTATION			
	JOB PIECE NO. 28878(04)	SHEET NO. 18		

6/2/2017 9:36:54 AM L:\2012\12037096 - 000T EC-144 Task Order 6\Drawings\BRIDGE\jp28878(04)_a-supers.s3.dgn