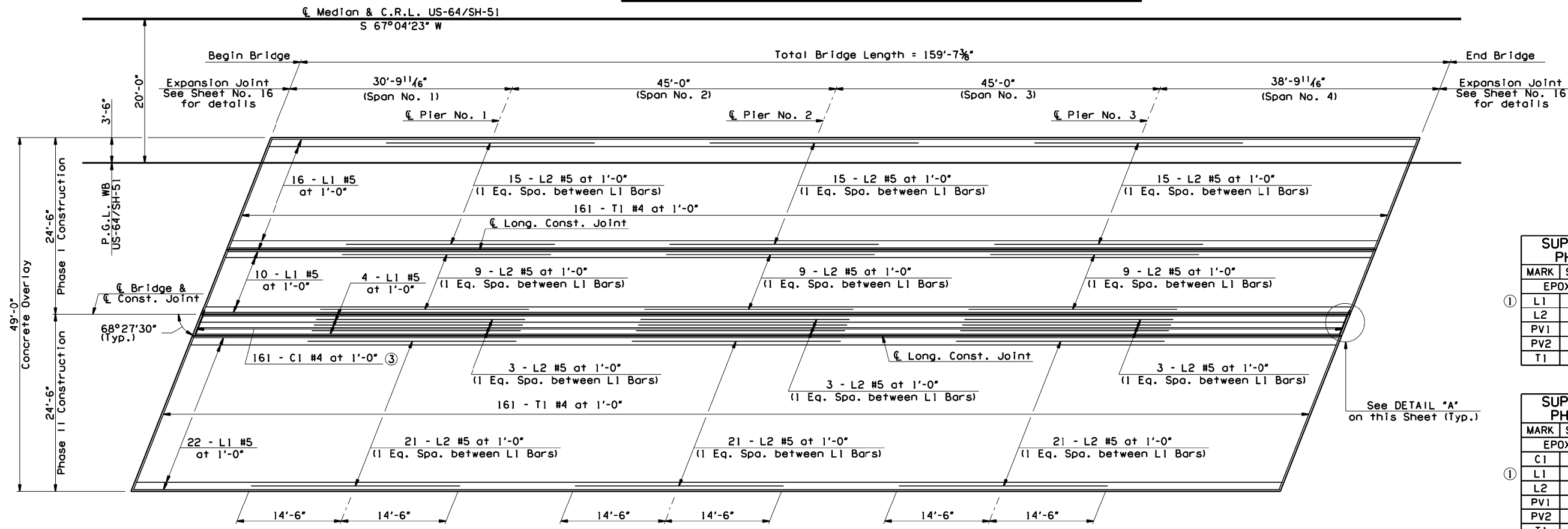


All information included in these plans is based on the existing As-Built and surveyed data. It is solely the Contractor's responsibility to accurately verify this information prior to any demolition or construction. For additional information, see the General Notes "VERIFICATION OF EXISTING CONDITIONS", "SURVEYING AND CONSTRUCTION STAKING", & "ESTABLISHMENT OF VERTICAL GEOMETRY" on Sheet No. 3.

OKLAHOMA DEPARTMENT OF TRANSPORTATION					
FED. ROAD DIST. NO.	STATE	JOB PIECE NO.	FISCAL YEAR	SHEET NO.	TOTAL SHEETS
6	OKLA.	28878(04)			
DESCRIPTION		REVISIONS		DATE	



**SUPERSTRUCTURE BAR LIST
PHASE I CONSTRUCTION**

MARK	SIZE	NO.	FORM	LENGTH
EPOXY COATED REINFORCING STEEL				
L1	#5	26	STR.	164'-3"
L2	#5	72	STR.	29'-0"
PV1	#6	322	BENT	4'-7"
PV2	#6	162	STR.	4'-1"
T1	#4	161	STR.	26'-2"

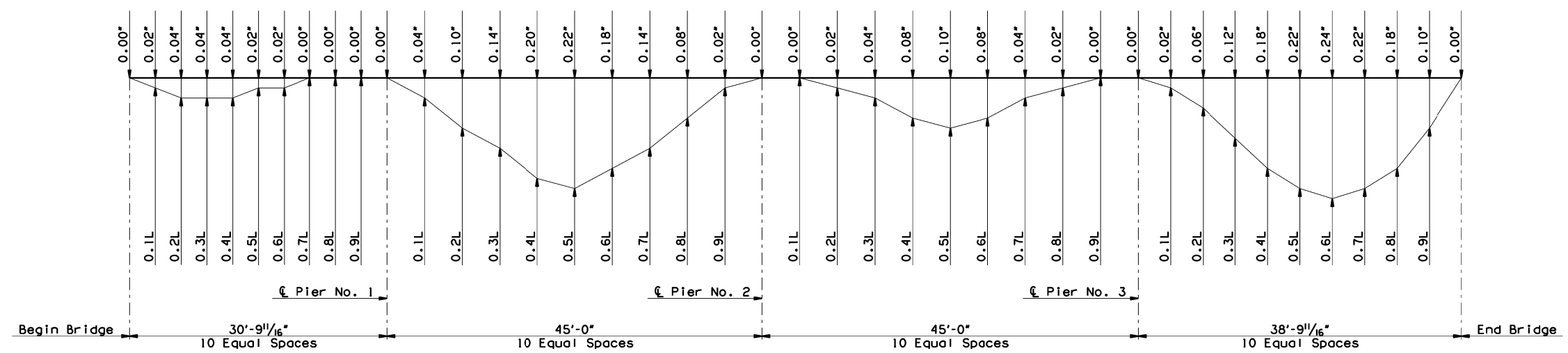
**SUPERSTRUCTURE BAR LIST
PHASE II CONSTRUCTION**

MARK	SIZE	NO.	FORM	LENGTH
EPOXY COATED REINFORCING STEEL				
C1	#4	161	STR.	2'-0"
L1	#5	26	STR.	164'-3"
L2	#5	72	STR.	29'-0"
PV1	#6	322	BENT	4'-7"
PV2	#6	162	STR.	4'-1"
T1	#4	161	STR.	26'-2"

① Includes Two 2'-6" Lap Lengths.

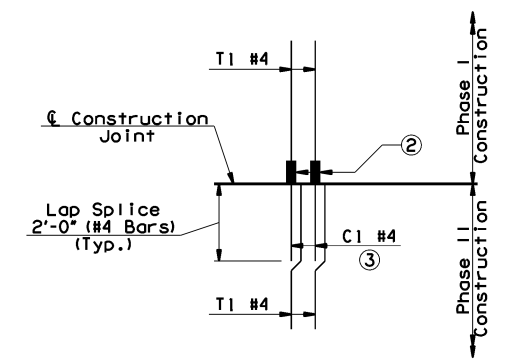
SLAB PLAN

NOTES:
Sawed and sealed longitudinal joint locations to match location of existing construction joints. Contractor to verify all dimensions.
Retro-Fit Parapet reinforcing bars not shown for clarity. See Sheet Nos. 19 & 20 for details.



DEAD LOAD DEFLECTION DIAGRAM

NOTE:
The Dead Load Deflection shown above at the tenth points are the initial deflections due to Slab Overlay + Retro-Fit Concrete Parapet. Deflections shall be taken into consideration in pouring the Slab Overlay.



DETAIL "A"

- ② Install Mechanical Reinforcing Bar Coupler (Epoxy Coated) in accordance with Section 511.04.C.3. Installation shall follow the Manufacturer's recommendations. Couplers shall be attached to: T1 #4
- ③ Splice the following bars:
T1 Bars with C1 Bars (Phase I Construction)
Lap the following bars:
C1 Bars with T1 Bars (Phase II Construction)

US-64/SH-51 WB OVER SHERIDAN RD.		TULSA COUNTY	DESIGN	JGS	6/15
BRIDGE "A"			DETAIL	SJL	9/15
			CHECK	BRT	12/16
			GARVER		
STATE OF OKLAHOMA	DEPARTMENT OF TRANSPORTATION				
	JOB PIECE NO. 28878(04)	SHEET NO. 17			

6/2/2017 9:36:37 AM L:\2012\12037096 - 000T EC-414 Task Order 6\Drawings\BRIDGE\jp28878(04)_a-supers2.dgn