

FED. ROAD DIST. NO.	STATE	JOB PIECE NO.	FISCAL YEAR	SHEET NO.	TOTAL SHEETS
6	OKLA.	28878(04)			

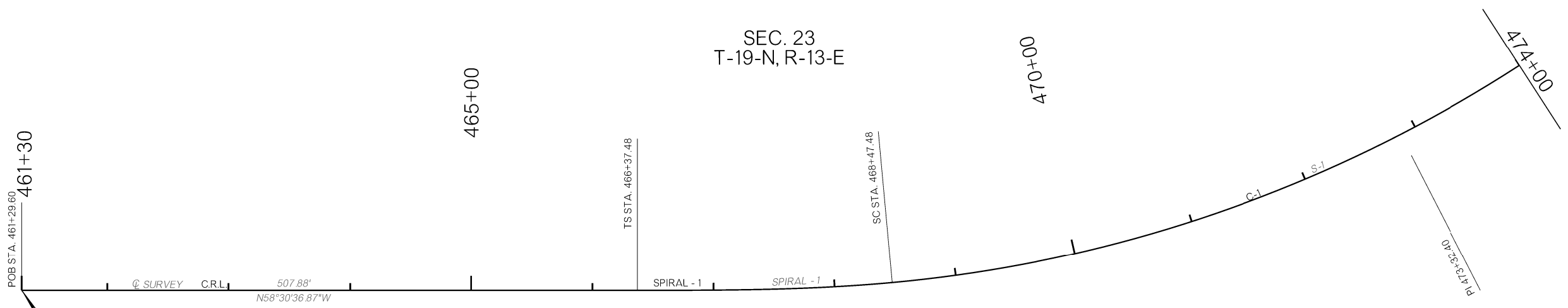
DESCRIPTION	REVISIONS	DATE



SCALE



SEC. 23
T-19-N, R-13-E



P.O.B.
C.R.L. STA. 461+29.60=
Q SURVEY STA. 461+29.60
N=412469.83
E=2588162.56

C.R.L. SPIRAL 1
$\Delta = 05^{\circ}15'00.01''$ LT
Ls = 210.00'
L.T. = 140.06'
S.T. = 70.06'
Xs = 209.92
Ys = 6.41

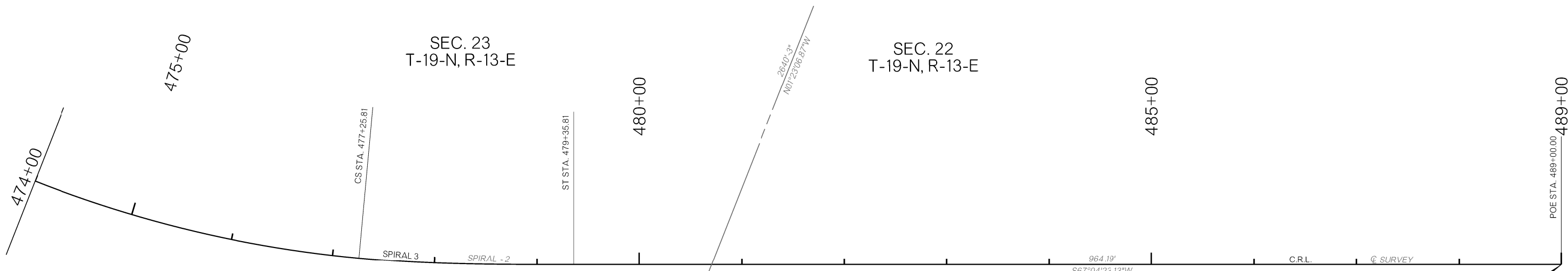
Q SURVEY SPIRAL 1
$\Delta = 05^{\circ}15'00.01''$ LT
Ls = 210.00'
L.T. = 140.06'
S.T. = 70.06'
Xs = 209.92
Ys = 6.41

C.R.L. CURVE C-1
PI = 473+09.49
N = 2588132.81
E = 413043.52
$\Delta = 43^{\circ}54'59.98''$ LT
D = 05^{\circ}00'00.01''
T = 462.01
L = 878.33
R = 1145.91
E = 89.63

Q SURVEY CURVE S-1
PI = 473+09.49
N = 2588132.81
E = 413043.52
$\Delta = 43^{\circ}54'59.98''$ LT
D = 05^{\circ}00'00.01''
T = 462.01
L = 878.33
R = 1145.91
E = 89.63

SEC. 23
T-19-N, R-13-E

SEC. 22
T-19-N, R-13-E



C.R.L. SPIRAL C-2
$\Delta = 05^{\circ}15'00.01''$ LT
Ls = 210.00'
L.T. = 140.06'
S.T. = 70.06'
Xs = 209.92
Ys = 6.41

Q SURVEY SPIRAL S-2
$\Delta = 05^{\circ}15'00.01''$ LT
Ls = 210.00'
L.T. = 140.06'
S.T. = 70.06'
Xs = 209.92
Ys = 6.41

SEC. 23
T-19-N, R-13-E

SEC. 22
T-19-N, R-13-E

P.O.E.
C.R.L. STA. 489+00.00=
Q SURVEY STA. 489+00.00
N=412451.79
E=2586608.84

DESIGN	NAB	3/16	OKLAHOMA DEPARTMENT OF TRANSPORTATION US-64/SH-51 OVER SHERIDAN RD. GEOMETRIC LAYOUT
DRAWN	T.J.H.	9/16	
CHECKED	NAB	9/16	
APPROVED			
SQUAD	GARVER		
COUNTY	TU.SA	HIGHWAY	SH-51
STATE JOB NO.	28878(04)		SHEET NO. 10

6/2/2017 9:35:02 AM L:\2012\12037096 - 000T EC-144 Task Order 6\Drawings\28878(04)_GEO.dgn