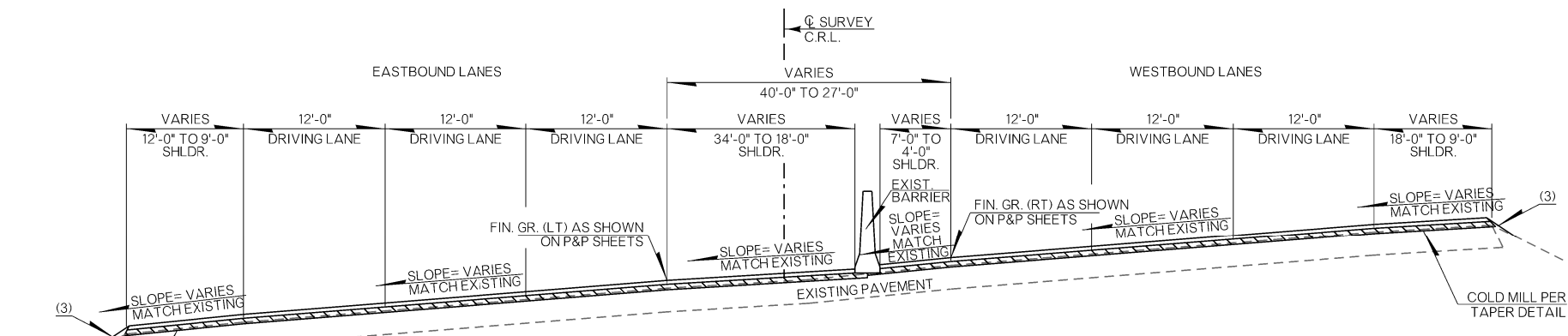


FED. ROAD DIST. NO.	STATE	JOB/PIECE NO.	FISCAL YEAR	SHEET NO.	TOTAL SHEETS
6	OKLA.	28878(04)			

DESCRIPTION	REVISIONS	DATE

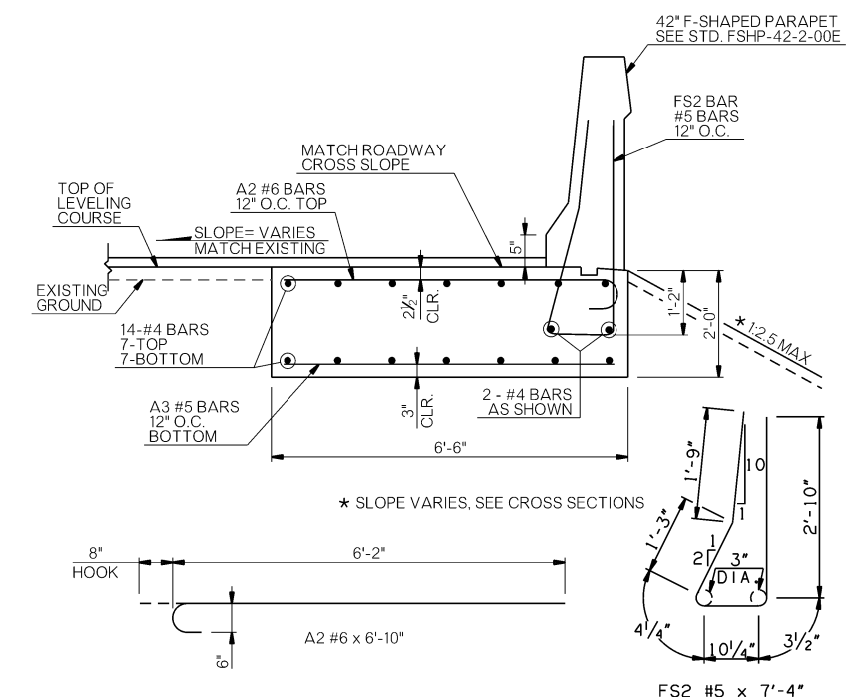


TYPICAL NO. 1

NOT TO SCALE
 WESTBOUND C.R.L. STA. 475+38.00 TO STA. 479+38.13
 EASTBOUND C.R.L. STA. 475+38.00 TO STA. 479+70.50

PAVEMENT REQUIREMENT		
VARIES PAVT. STRUCTURE	12'-0" DRIVING LANES	33'-0" TO 4'-0" PAVED SHOULDERS
SURFACE COURSE	2" SUPERPAVE TYPE S4 (PG 70-28 OK)	2" SUPERPAVE TYPE S4 (PG 64-22 OK)
LEVELING COURSE *	VARIES SUPERPAVE TYPE S4 (PG 70-28 OK)	VARIES SUPERPAVE TYPE S4 (PG 64-22 OK)

* LEVELING COURSE SHALL NOT HAVE LIFTS LESS THAN 1.5" OR GREATER THAN 2.5". CONTRACTOR MAY SUBSTITUTE S4 (PG 70-28) WITH S5 (PG 64-22), FOR LEVELING COURSE ONLY, AT NO ADDITIONAL COST.
 SUBSTITUTION FROM (PG 64-22 OK) TO (PG 70-28 OK) ON SHOULDERS IS ALLOWED. CONTRACTOR WILL BE PAID BASED ON UNIT COST OF "SUPERPAVE (PG 64-22 OK)" IN EITHER CASE.



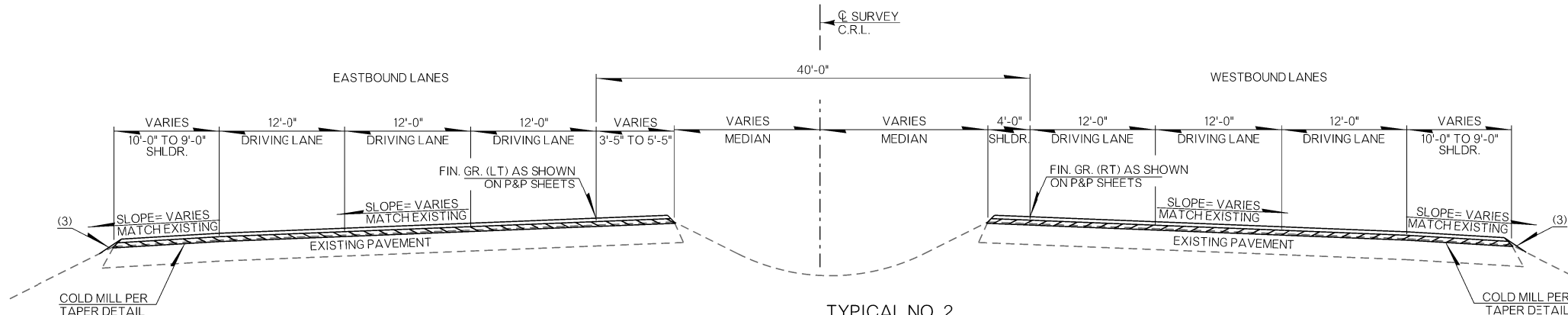
REINFORCED PAVED SECTION FOR 42" F-SHAPED PARAPET AT SHOULDER

NOT TO SCALE
 C.R.L. STA. 476+75.00 TO STA. 479+38.13 (RT.)

(1) BACKFILL NOTE:
 TO BE BACKFILLED AS PART OF THE FINISHING OPERATIONS. COST TO BE INCLUDED IN OTHER ITEMS OF WORK.

(2) TOPSOIL NOTE:
 THE CONTRACTOR SHALL STRIP ALL OF THE AVAILABLE TOPSOIL, STOCKPILE IT, AND PLACE IT BACK ON THE SECTION IN ACCORDANCE WITH SECTION 205 OF THE STANDARD SPECIFICATIONS. RESERVED TOPSOIL SHALL BE SPREAD FIRST ON THE COMPLETED SLOPES OF THE CUT SECTIONS AND THE REMAINDER ON COMPLETED FILL SLOPES OR OTHER PRIORITY AREAS LOCATED BY THE ENGINEER. ALL COSTS ASSOCIATED WITH OPERATIONS SHALL BE INCLUDED IN THE PAY ITEM FOR EARTHWORK, LUMP SUM.
 THE GRADING LINE AS SHOWN ON THE TYPICAL AND CROSS SECTIONS IS TO THE TOP OF THE TOPSOIL. EARTHWORK QUANTITIES WERE NOT ADJUSTED FOR SALVAGE AND THE TOPSOIL QUANTITY IS INCLUDED IN THE MASS LINE BALANCE.

(3) CONTRACTOR TO LEVEL UP ADJACENT TO OVERLAY. COST TO BE INCLUDED IN OTHER ITEMS OF WORK.

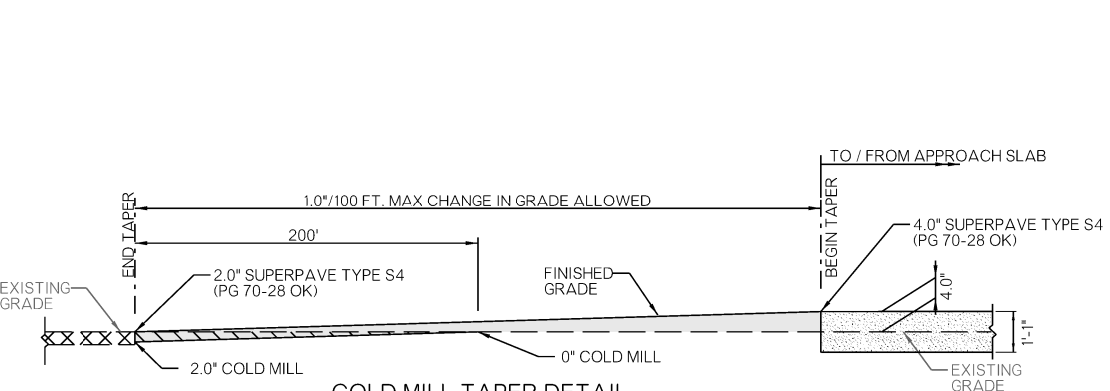


TYPICAL NO. 2

NOT TO SCALE
 WESTBOUND STA. 481+78.50 TO STA. 486+11.00
 EASTBOUND STA. 482+10.87 TO STA. 486+11.00

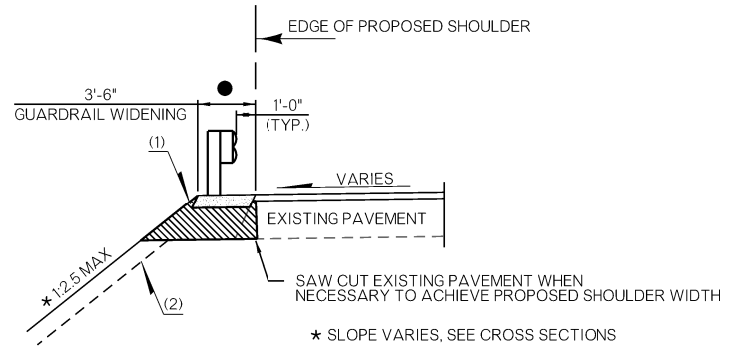
PAVEMENT REQUIREMENT		
VARIES PAVT. STRUCTURE	12'-0" DRIVING LANES	10'-0" TO 2'-0" PAVED SHOULDERS
SURFACE COURSE	2" SUPERPAVE TYPE S4 (PG 70-28 OK)	2" SUPERPAVE TYPE S4 (PG 64-22 OK)
LEVELING COURSE *	VARIES SUPERPAVE TYPE S4 (PG 70-28 OK)	VARIES SUPERPAVE TYPE S4 (PG 64-22 OK)

* LEVELING COURSE SHALL NOT HAVE LIFTS LESS THAN 1.5" OR GREATER THAN 2.5". CONTRACTOR MAY SUBSTITUTE S4 (PG 70-28) WITH S5 (PG 64-22), FOR LEVELING COURSE ONLY, AT NO ADDITIONAL COST.
 SUBSTITUTION FROM (PG 64-22 OK) TO (PG 70-28 OK) ON SHOULDERS IS ALLOWED. CONTRACTOR WILL BE PAID BASED ON UNIT COST OF "SUPERPAVE (PG 64-22 OK)" IN EITHER CASE.



COLD MILL TAPER DETAIL

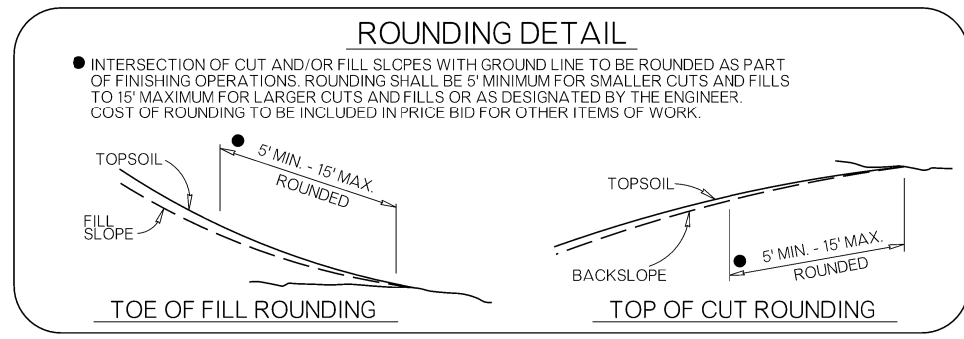
NOT TO SCALE
 WESTBOUND C.R.L. STA. 475+38.00 TO STA. 479+38.13
 WESTBOUND C.R.L. STA. 481+78.50 TO STA. 486+11.00
 EASTBOUND C.R.L. STA. 475+38.00 TO STA. 479+70.50
 EASTBOUND C.R.L. STA. 482+10.87 TO STA. 486+11.00



PAVEMENT REQUIREMENT	
PAVT. STRUCTURE	GUARDRAIL WIDENING
SURFACE COURSE	4" SUPERPAVE TYPE S4 (PG 64-22 OK)

EASTBOUND GUARDRAIL WIDENING TYPICAL

NOT TO SCALE
 C.R.L. STA. 482+10.87 TO STA. 487+34.00 3'-0" (L.T.)
 C.R.L. STA. 487+34.00 TO STA. 487+62.00 TRANSITION 3'-0" TO 0'-0" (L.T.)
 C.R.L. STA. 482+10.87 TO STA. 485+34.00 3'-0" (RT.)
 C.R.L. STA. 485+34.00 TO STA. 485+83.00 TRANSITION 3'-0" TO 0'-0" (RT.)



ROUNDING DETAIL

INTERSECTION OF CUT AND/OR FILL SLOPES WITH GROUND LINE TO BE ROUNDED AS PART OF FINISHING OPERATIONS. ROUNDED SHALL BE 5' MINIMUM FOR SMALLER CUTS AND FILLS TO 15' MAXIMUM FOR LARGER CUTS AND FILLS OR AS DESIGNATED BY THE ENGINEER. COST OF ROUNDED TO BE INCLUDED IN PRICE BID FOR OTHER ITEMS OF WORK.

DESIGN	NAB	3/16	OKLAHOMA DEPARTMENT OF TRANSPORTATION							
DRAWN	TJH	9/16	US-64/SH-51 OVER SHERIDAN RD.							
CHECKED	NAB	9/16	TYPICAL SECTION							
APPROVED										
SQUAD	GARVER		COUNTY	TU, SA	HIGHWAY	SH-51	STATE JOB NO.	28878(04)	SHEET NO.	2

6/2/2017 9:33:45 AM L:\2021\2037096 - 0001 EC-144 Task Order 6\Drawings\28878(04)_Typ_001.dgn