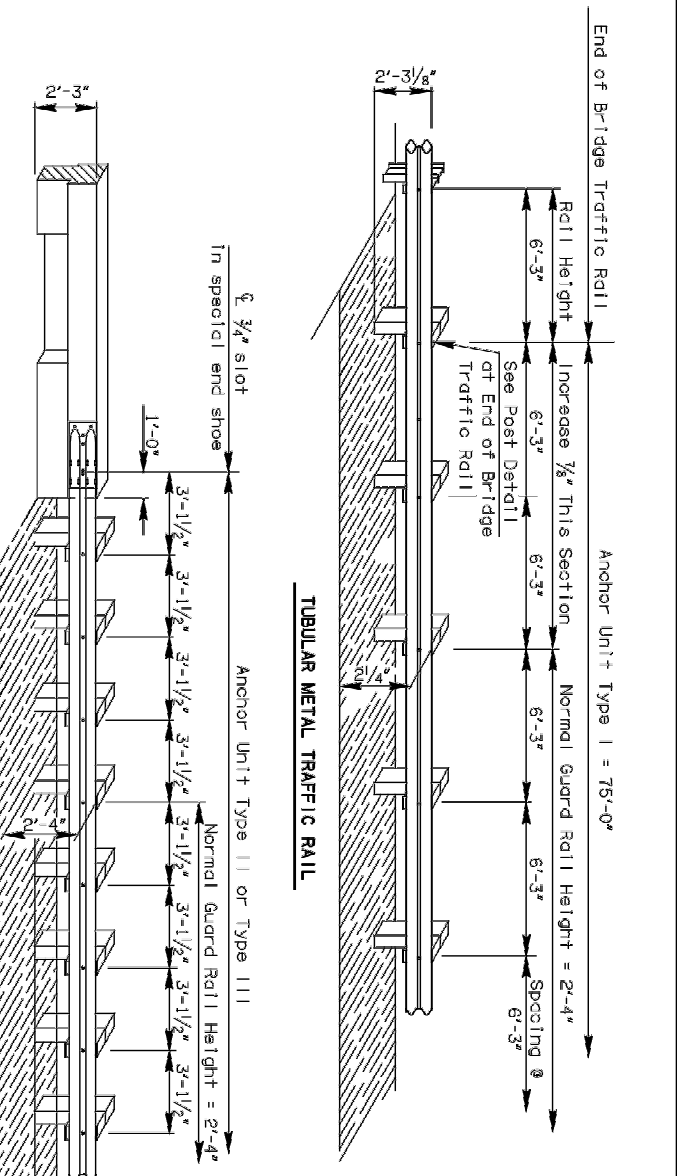
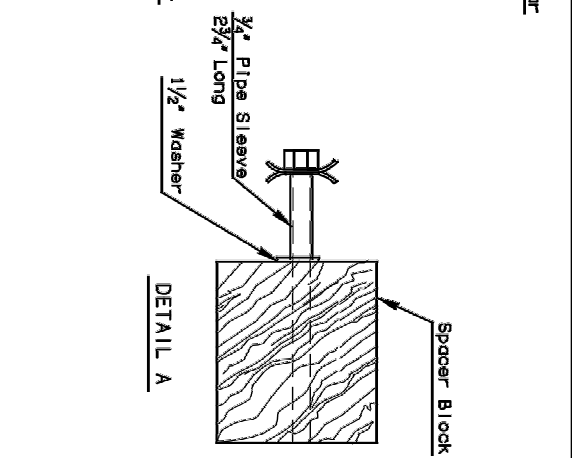
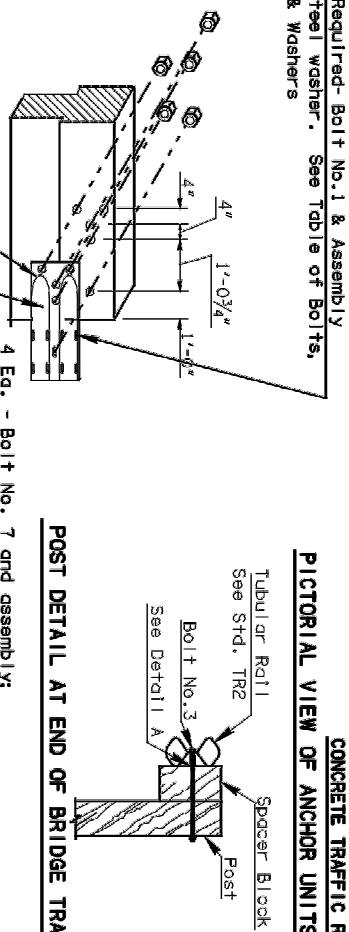


**BRIDGE END GUARD RAIL ANCHOR UNIT - TYPE I**  
USE ON BRIDGE WITH TUBULAR METAL TRAFFIC RAIL

ELEVATION



**CONCRETE TRAFFIC RAIL**  
PICTORIAL VIEW OF ANCHOR UNITS AT END OF BRIDGE



4 Eq. - Bolt No. 7 and assembly;  
1 Eq. - Bolt No. 6 and assembly;  
An extra washer shall be used under the bolt head. Bolts shall be of sufficient length to extend through the full thickness of the nut at least 1/2\"/>

NOTE: SEE STD BEGR-2 FOR DETAILS OF SPECIAL END SHOE, POSTS & SPACER BLOCK AND TABLE OF BOLTS, NUTS & WASHERS.

See Traffic Std. DU-1 For Standard Delineator Type 1, Code 3

| BASIS OF PAYMENT                    |      |
|-------------------------------------|------|
| ITEM                                | UNIT |
| * Guard Rail Anchor Unit (Type I)   | Eq.  |
| * Guard Rail Anchor Unit (Type II)  | Eq.  |
| * Guard Rail Anchor Unit (Type III) | Eq.  |

\* Includes post, guard rail, all hardware, concrete, Type 1, Code 3 Delineator (amber color) and other appurtenances necessary to construct Guard Rail Anchor Unit.

APPROVED BY BRIDGE ENGINEER

DATE:

OKLAHOMA DEPT. OF TRANSPORTATION  
COUNTY BRIDGE STANDARD ( ENGLISH )

BRIDGE END GUARD RAIL

1999 SPECIFICATIONS

STATE JOB NO. 27822(04) SHEET NO. B003