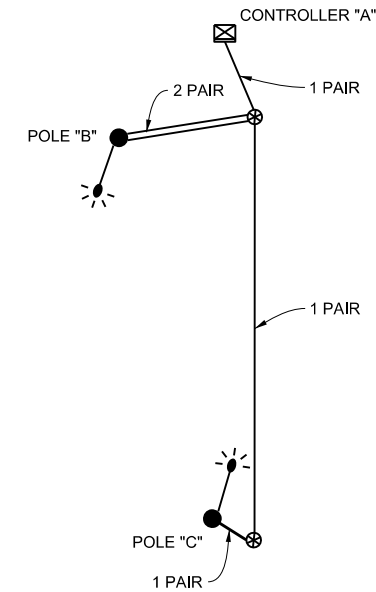
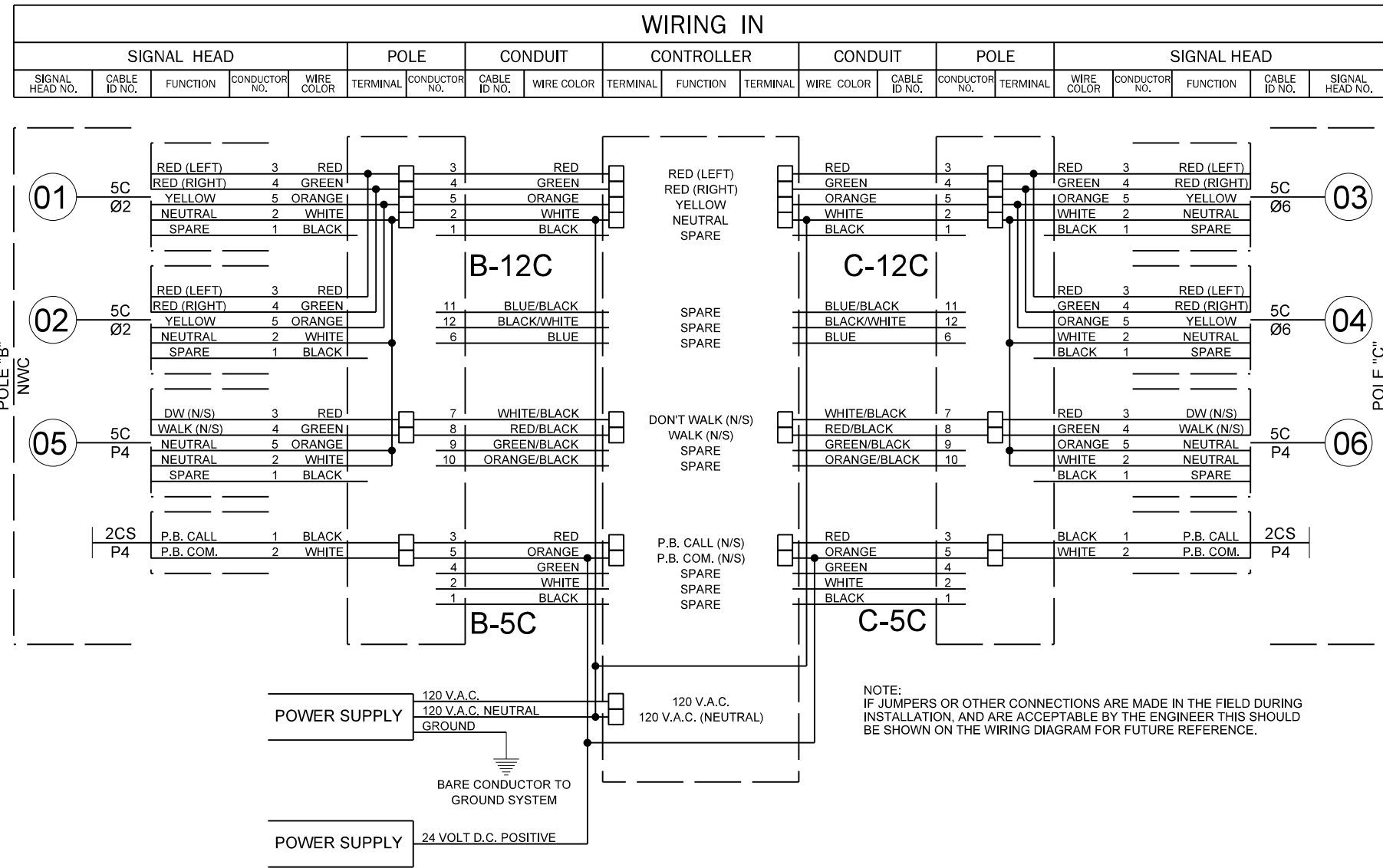
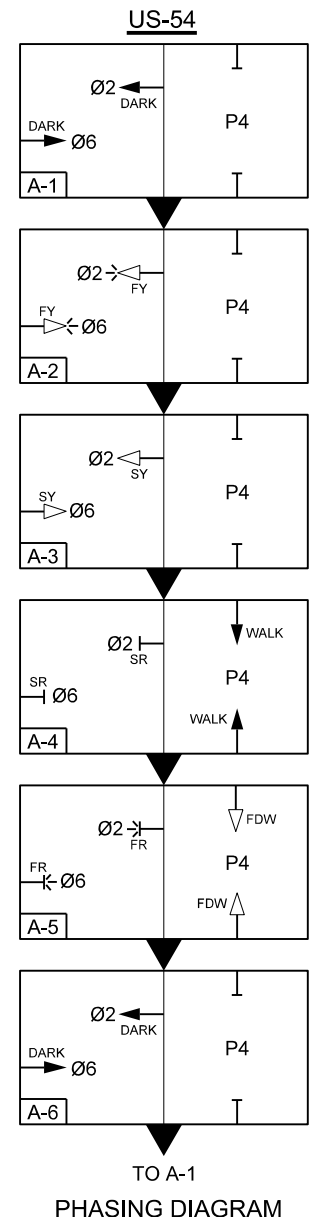


WIRING DIAGRAM



LUMINAIRE WIRING DIAGRAM
ONE PAIR EQUALS TWO CONDUCTORS (1/C 10 AWG COPPER) ONE BLACK, ONE WHITE. CONDUCTORS SHALL BE SPICED ONLY AT THE TERMINAL BLOCK AT EACH POLE BASE. A FUSE HOLDER SHALL BE PROVIDED IN THE HANDHOLE OF EACH COMBINATION TRAFFIC SIGNAL AND STREET LIGHT POLE. THE FUSE HOLDER SHALL BE INSTALLED IN THE LINE SIDE CONDUCTOR FOR THE LUMINAIRE. THE FUSE HOLDER SHALL BE WATERPROOF IN-LINE FUSE HOLDER. IT SHALL BE SIMILAR TO BUSSMAN MFG. CO. TYPE "TRON" HEB, OR OTHER APPROVED EQUAL. COMPLETE WITH A PROPERLY SIZED TYPE K T K FUSE.



SEQUENCE CHART U.S. 54

BLOCK	DIRECTION	SIGNAL HEAD NUMBERS				SUGGESTED TIMING (SEC.)
		1, 2, 3 & 4	5	6		
A-1	Ø2, Ø6 ROW		DW	DW	-	
A-2	Ø2, Ø6 PRE-CLEARANCE INTERVAL		DW	DW	3.0	
A-3	Ø2, Ø6 CLEARANCE INTERVAL		DW	DW	3.0	
A-4	Ø2, Ø6 RED; P4 PEDESTRIAN WALK INTERVAL		W	W	7.0	
A-5	Ø2, Ø6 FLASHING RED (STOP & PROCEED IF CLEAR); P4 CLEARANCE INTERVAL		FDW	FDW	22.0	
A-1	Ø2, Ø6 ROW		DW	DW	-	

TIMING NOTE: MINIMUM TIME FOR DARK SIGNAL DISPLAYED BETWEEN PED. ACTUATIONS IS 60 SECONDS.

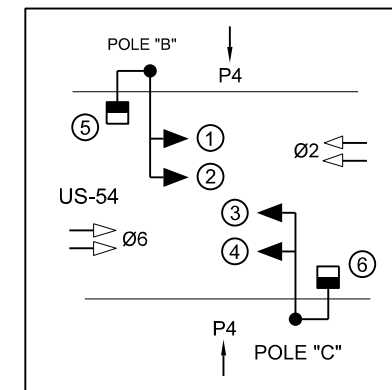
SUMMARY OF MAST ARM MOUNTED SIGNS

MESSAGE	POLE LOCATION	NO. OF SIGNS	WD.	HT.	AREA SQ. FT.	TOTAL AREA SQ. FT.
R10-23	"B", "C"	2	24"	30"	5	10
TOTAL SQ. FT.						10

PROPOSED CONDUIT SCHEDULE

RUN NUMBER	1"	2	3	4	5
CONDUIT SIZE (IN)	-	2"	2"	2"	3"
NUMBER OF CONDUIT	-	1	1	1	1
LENGTH OF CONDUIT (FT)	-	12	96	32	25
TRENCH (T) / BORE (B) / OVERHEAD (O)	T	T	B	T	T

* POWER SERVICE AS DETERMINED BY THE POWER COMPANY.



LEGEND

SY	STEADY YELLOW
FY	FLASHING YELLOW
SR	STEADY RED
FR	FLASHING RED
DW	DO NOT WALK
W	WALK
FDW	FLASHING DO NOT WALK

PHASING LEGEND

	SIGNAL IS DARK UNTIL ACTIVATED / WALK
	FLASHING YELLOW (FY)
	STEADY YELLOW (SY) / FLASHING DON'T WALK (FDW)
	STEADY RED (SR) / STEADY DON'T WALK
	FLASHING RED (FR)

DESIGN	BB	DRM	OKLAHOMA DEPARTMENT OF TRANSPORTATION DESIGN DIVISION	
DRAWN	JB	MKW	PEDESTRIAN SIGNAL PHASING AND SEQUENCE	
CHECKED	BB			
APPROVED	GC			
SQUAD	JACOBS			
JOB PIECE NO. 20839(08)			SHEET NO. T009	

PRINT DATE: 8/7/2017 F:\job\WKM2300 - EC1335 (TEXAS CO)\700CADD\702CIVIL\WKM2300_PSP2.dwg