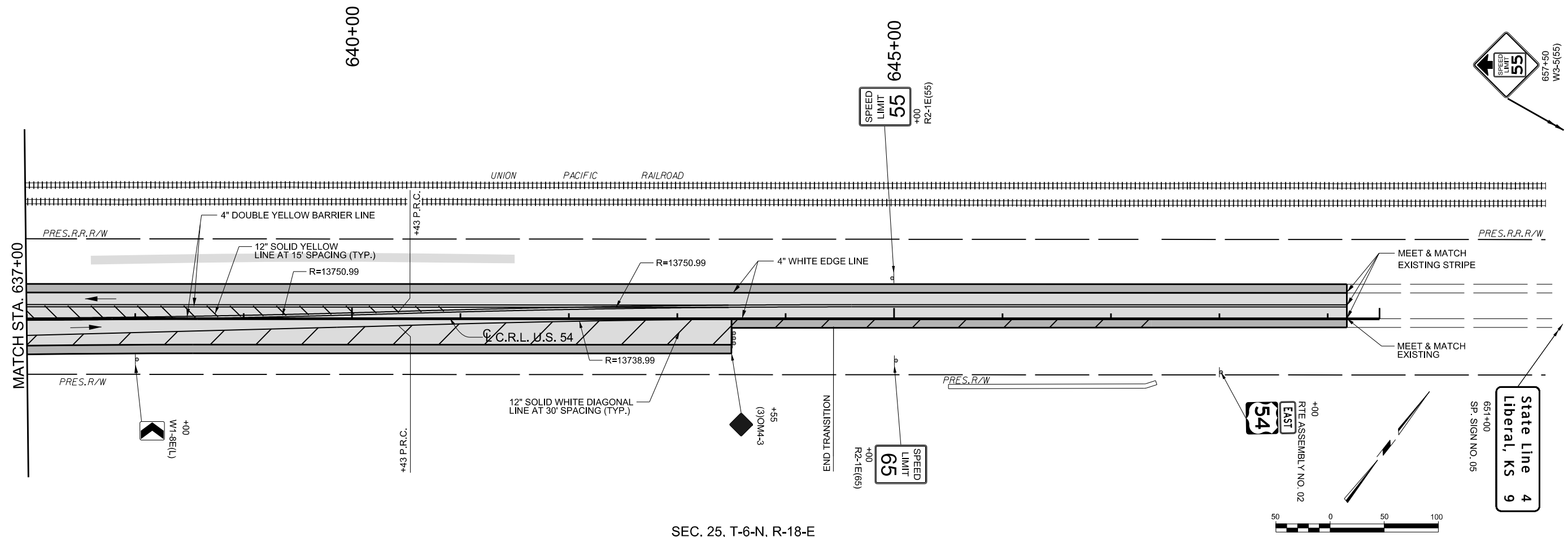


SEC. 25, T-6-N, R-18-E



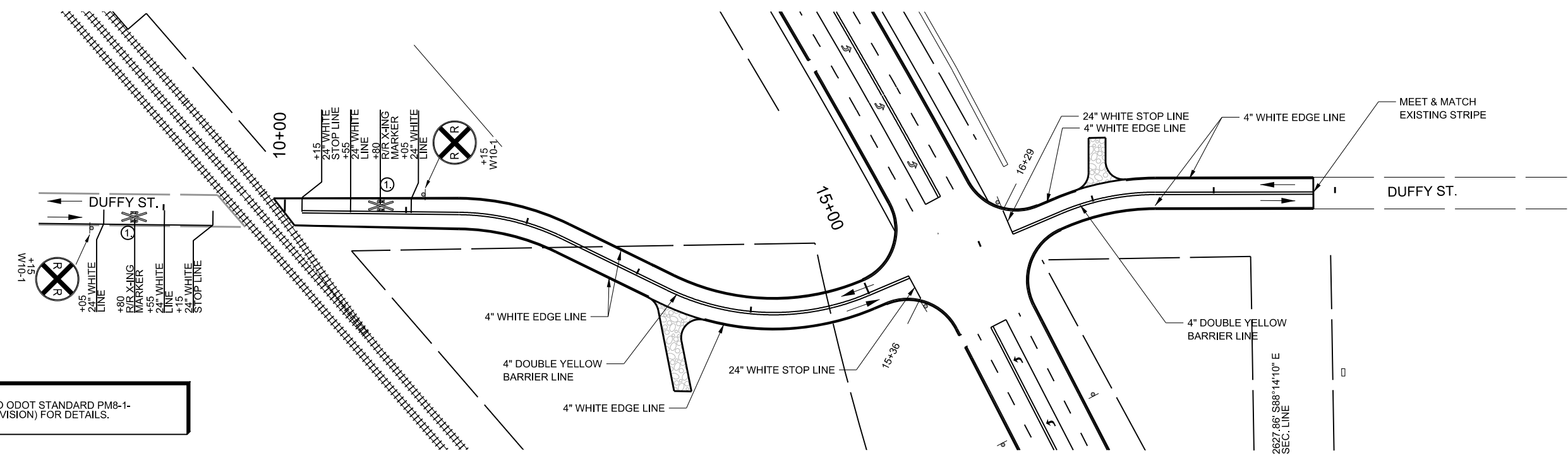
State Line 4
Liberal, KS 9



SEC. 25, T-6-N, R-18-E

SEC. 25, T-6-N, R-18-E

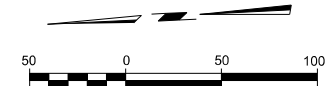
SEC. 36, T-6-N, R-18-E



NOTE:
1. REFER TO ODOT STANDARD PM8-1-
(LATEST REVISION) FOR DETAILS.

SEC. 26, T-6-N, R-18-E

SEC. 35, T-6-N, R-18-E



DESIGN	BB	DRM	OKLAHOMA DEPARTMENT OF TRANSPORTATION DESIGN DIVISION SIGNING AND STRIPING PLAN (5) JOB PIECE NO. 20839(08) SHEET NO. T006
DRAWN	JB	MKW	
CHECKED	BB		
APPROVED	GC		
SQUAD	JACOBS		

PRINT DATE: 8/7/2017 F:\job\WKX2300 - EC1335 (TEXAS CO)\700CADD\702CIVIL\WKX2300_S55.dgn