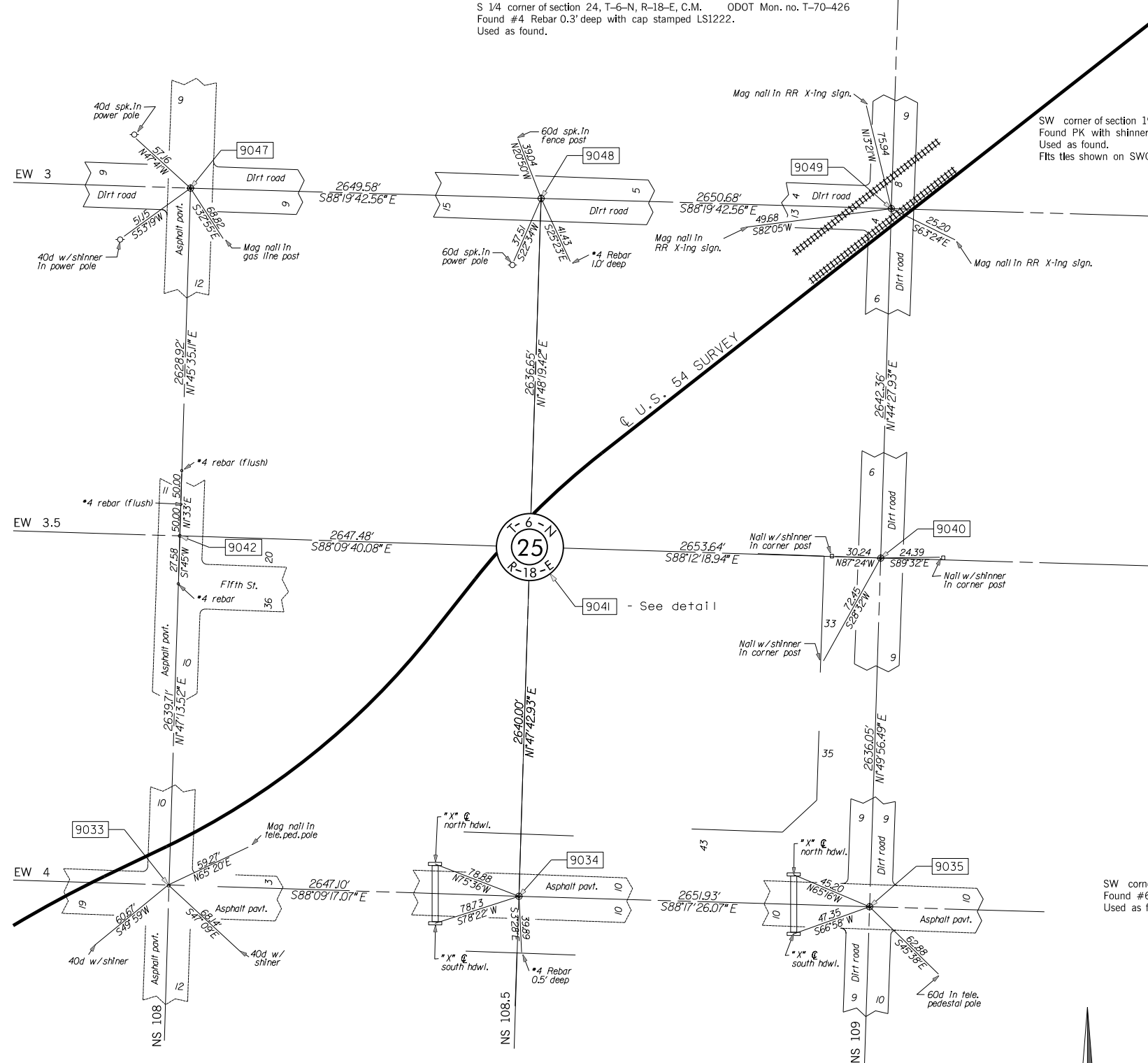


OKLAHOMA DEPARTMENT OF TRANSPORTATION					
FED. ROAD DIST. NO.	STATE	PROJ. NO.	FISCAL YEAR	SHEET NO.	TOTAL SHEETS
6	OKLA.			5022	
DESCRIPTION		REVISIONS		DATE	

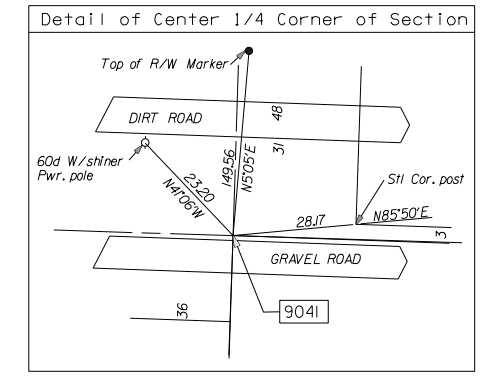
SW corner of section 24, T-6-N, R-18-E, C.M.  
 ODOT Mon. no. T-70-425. Found #7 rebar 0.3' deep  
 filed by LSI339.  
 Used as found.



S 1/4 corner of section 24, T-6-N, R-18-E, C.M. ODOT Mon. no. T-70-426  
 Found #4 Rebar 0.3' deep with cap stamped LSI222.  
 Used as found.

SW corner of section 19, T-6-N, R-19-E, C.M. ODOT Mon. no. T-70-427  
 Found PK with shinner stamped LSI222.  
 Used as found.  
 Fits ties shown on SW02331(I) survey.

Center 1/4 corner of section 25, T-6-N, R-18-E, C.M.  
 ODOT Mon. no. T-70-444. Found steel corner post with  
 lathe. Fits references set by LSI339. Used as found.  
 Fits ties shown on SW02331(I) survey.



W 1/4 corner of section 25, T-6-N, R-18-E, C.M.  
 ODOT Mon. no. T-70-421. Found #4 rebar with cap  
 stamped LSI222  
 and references shown on city map.  
 Used as found

W 1/4 corner of section 30, T-6-N, R-19-E, C.M.  
 ODOT Mon. no. T-70-420. Found 1' square rod (0.3' deep)  
 set by unknown parties.  
 Used as found.

SW corner of section 25, T-6-N, R-18-E, C.M.  
 ODOT Mon. no. T-70-414. Found #7 rebar (0.3' deep) filed  
 by L.S.1339  
 Found 1' square rod (0.5' deep).

SW corner of section 30, T-6-N, R-19-E, C.M. ODOT Mon. no. T-70-416  
 Found #6 rebar (0.3' deep) filed by L.S.1339.  
 Used as found.

1' square rod fits ties and description of monument  
 called for on SW02331(I) survey.  
 Used as found.  
 #7 rebar is S23°11'E 6.52' of my corner.

S 1/4 corner of section 25, T-6-N, R-18-E, C.M. ODOT Mon. no. T-70-415  
 Found #4 rebar 1.5' deep filed by LSI339.  
 Brought found corner to surface, set #4 rebar with cap stamped PLS1444.

SCALE:  
 1" = 500'

NOTE: REFERENCES SHOWN ARE NOT TO SCALE

PLS	DKW		OKLAHOMA DEPARTMENT OF TRANSPORTATION	
DRAWN	DKW		SURVEY DIVISION	
CHECKED	JEW	LRT	SURVEY DATA SHEET	
APPROVED				
CREW	CLINTON	SWO 4251	(1) PROJECT NO. 20839(08)	SHEET NO. 5022