

OKLAHOMA DEPARTMENT OF TRANSPORTATION					
FED. ROAD DIST. NO.	STATE	PROJ. NO.	FISCAL YEAR	SHEET NO.	TOTAL SHEETS
6	OKLA.			S021	
DESCRIPTION		REVISIONS		DATE	

S 1/4 corner of section 23, T-6-N, R-18-E, C.M. ODOT Mon. no. T-70-424  
 Found #4 rebar (0.3' deep) with cap stamped LSJ222.  
 Used as found.

SW corner of section 23, T-6-N, R-18-E, C.M. ODOT Mon. no. T-70-423  
 Found #5 rebar 1.0' deep filled by LS1339.  
 Used as found.

Found #4 rebar 1.0' deep set by unknown parties.  
 Found #4 is N43°37'E 1.65' of my corner.

SW corner of section 24, T-6-N, R-18-E, C.M. ODOT Mon. no. T-70-425  
 Found #7 rebar 0.3' deep filled by LS1339.  
 Used as found.

W 1/4 corner of section 26, T-6-N, R-18-E, C.M. ODOT Mon. no. T-70-422. Found 1" pipe (1.0' deep) set by unknown parties.  
 Used as found.

W 1/4 corner of section 25, T-6-N, R-18-E, C.M. ODOT Mon. no. T-70-421  
 Found #4 rebar with cap stamped LS1222 and references shown on city map.  
 Used as found.

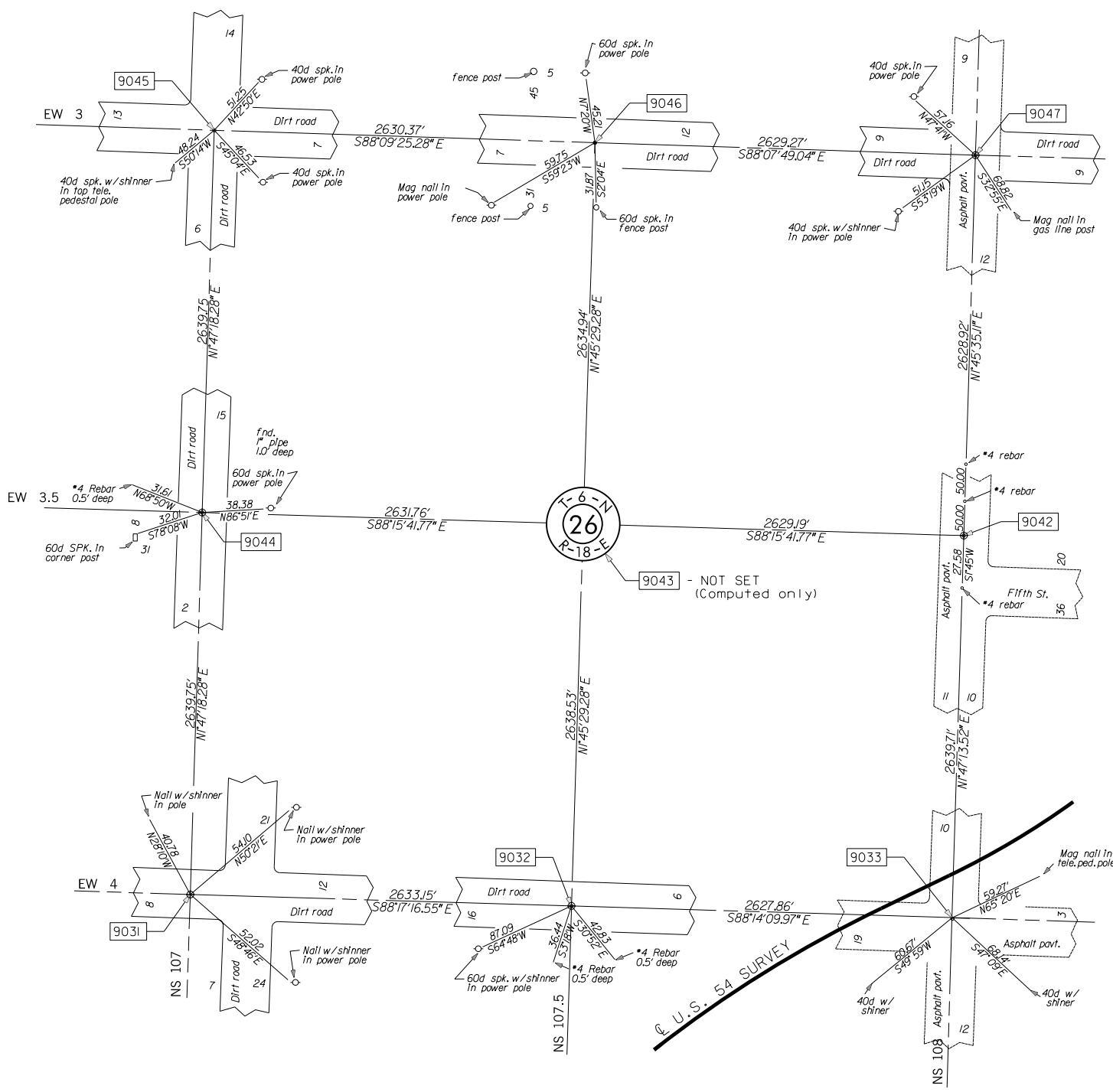
SW corner of section 26, T-6-N, R-18-E, C.M. ODOT Mon. no. T-70-412  
 Found #7 Rebar (0.3' deep) filled by LS1339.  
 Used as found.

SW corner of section 25, T-6-N, R-18-E, C.M. ODOT Mon. no. T-70-414  
 Found #7 rebar (0.3' deep) filled by L.S. 1339  
 Found 1" square rod (0.5' deep).

1" square rod fits ties and description of monument called for on SW02331(1) survey.  
 Used as found.

#7 rebar is S23°11'E 6.52' of my corner.

S 1/4 corner of section 26, T-6-N, R-18-E, C.M. ODOT Mon. no. T-70-413  
 Found #6 square rod (1.0' deep)  
 Fits ties shown on SW02331(1) survey.  
 Used as found.



SCALE:  
 1" = 500'

NOTE: REFERENCES SHOWN ARE NOT TO SCALE

OKLAHOMA DEPARTMENT OF TRANSPORTATION SURVEY DIVISION			
SURVEY DATA SHEET			
SHEET 21 OF 22			
PLS	DKW		
DRAWN	DKW		
CHECKED	JEW	LRT	
APPROVED			
CREW	CLINTON	SWO 4251 (1) PROJECT NO. 20839(08)	SHEET NO. S021