

OKLAHOMA DEPARTMENT OF TRANSPORTATION					
FED. ROAD DIST. NO.	STATE	PROJ. NO.	FISCAL YEAR	SHEET NO.	TOTAL SHEETS
6	OKLA.			5020	
DESCRIPTION		REVISIONS		DATE	

SW corner of section 26, T-6-N, R-18-E, C.M. ODOT Mon. no. T-70-412. Found #7 Rebar (0.3' deep) filed by LSI339. Used as found.

W 1/4 corner of section 35, T-6-N, R-18-E, C.M. ODOT Mon. no. T-70-408. Found #4 rebar with cap stamped LSI222. Used as found..
Found 60d spk..
60d spk. is N50°27'E 19.90' of #4 rebar.

SW corner of section 35, T-6-N, R-18-E, C.M. ODOT Mon. no. T-70-404. Found #7 Rebar (0.3' deep) set by unknown parties. Used as found.

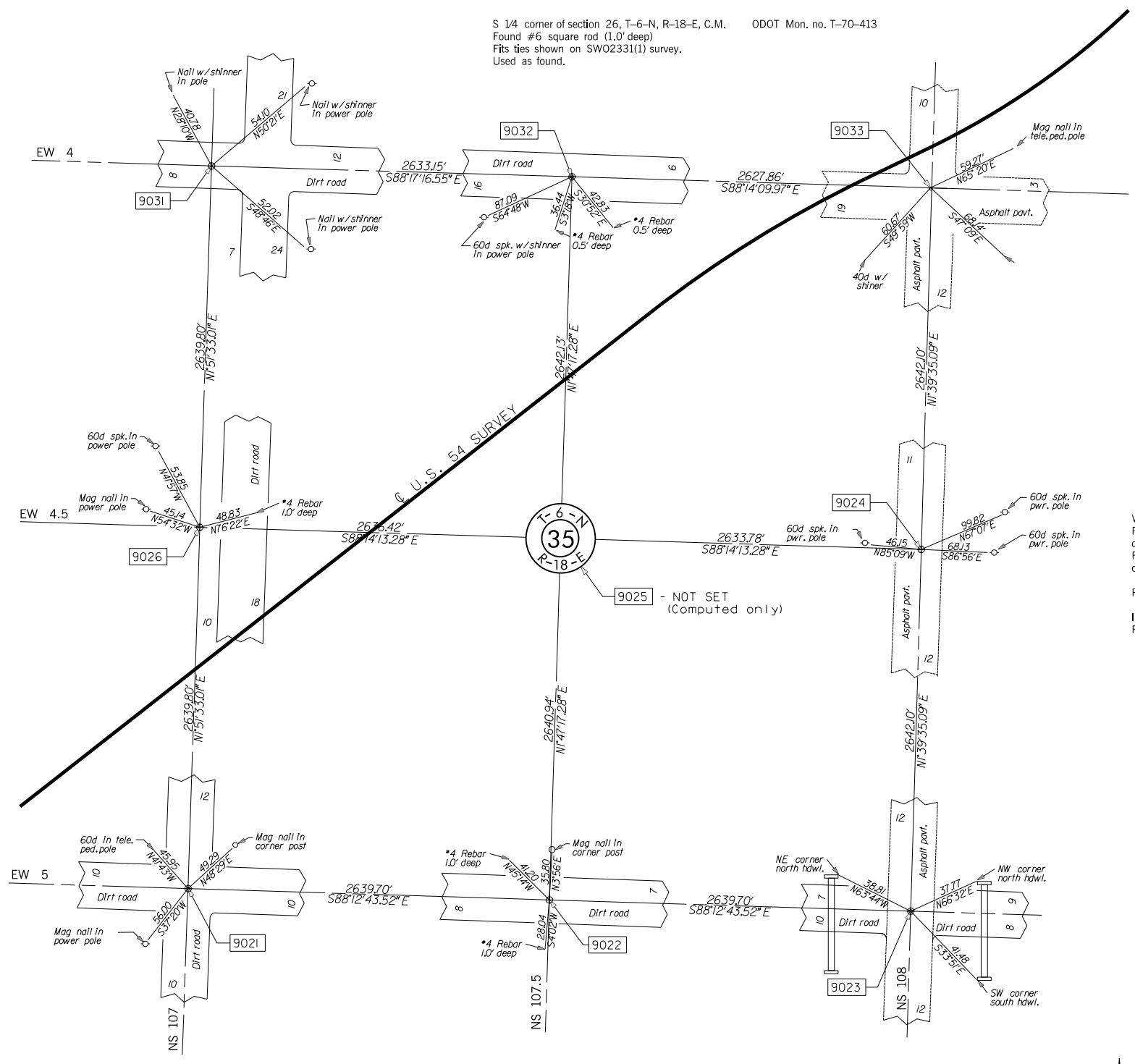
S 1/4 corner of section 26, T-6-N, R-18-E, C.M. ODOT Mon. no. T-70-413
Found #6 square rod (1.0' deep)
Fits ties shown on SW02331(1) survey.
Used as found.

SW corner of section 25, T-6-N, R-18-E, C.M. ODOT Mon. no. T-70-414
Found #7 rebar (0.3' deep) filed by L.S. 1339
Found 1" square rod (0.5' deep).
1" square rod fits ties and description of monument called for on SW02331(1) survey.
Used as found.
#7 rebar is S23°11'E 6.52' of my corner.

W 1/4 corner of section 36, T-6-N, R-18-E, C.M. ODOT Mon. no. T-70-407
Found #4 rebar that is on line and equal distance to a #6 rebar one half mile south and a #7 rebar one half mile north
Found a 60d spk. that is on line and equal distance to a #6 rebar one half mile south and a 1" sq. rod one half mile north.
Replaced 60d spk. with #4 rebar with cap stamped PLS1444.
I held the 60D position because the 1" sq. rod north fits town ties.
Found #4 rebar is S23°31'E 3.22' of my corner.

SW corner of section 36, T-6-N, R-18-E, C.M. ODOT Mon. no. T-70-406
Found #6 Rebar (0.3' deep) Filed by LSI339.
Used as found.

S 1/4 corner of section 35, T-6-N, R-18-E, C.M. ODOT Mon. no. T-70-405
Found #4 rebar L.S.1222 (0.5' deep).
Used as found.



SCALE:
1" = 500'

NOTE: REFERENCES SHOWN ARE NOT TO SCALE

PLS	DKW		OKLAHOMA DEPARTMENT OF TRANSPORTATION		
DRAWN	DKW		SURVEY DIVISION		
CHECKED	JEW	LRT	SURVEY DATA SHEET		
APPROVED					
CREW	CLINTON		SHEET 20 OF 22		
			SWO 4251 (1) PROJECT NO. 20839(08) SHEET NO. 5020		