

OKLAHOMA DEPARTMENT OF TRANSPORTATION					
FED. ROAD DIST. NO.	STATE	PROJ. NO.	FISCAL YEAR	SHEET NO.	TOTAL SHEETS
6	OKLA.			5019	
DESCRIPTION			REVISIONS	DATE	

S 1/4 CORNER SEC. 27, T-6-N, R-18-E, C.M. ODOT Mon. NO. T-70-411
 FOUND #4 REBAR (0.3' DEEP) WITH CAP STAMPED LS1222.
 USED AS FOUND.

SW corner of section 27, T-6-N, R-18-E, C.M. ODOT Mon. no. T-70-410
 Found #4 square rod (0.3' deep) set by unknown parties.
 Used as found.

SW corner of section 26, T-6-N, R-18-E, C.M. ODOT Mon. no. T-70-412
 Found #7 Rebar (0.3" deep) filed by LS1339.
 Used as found.

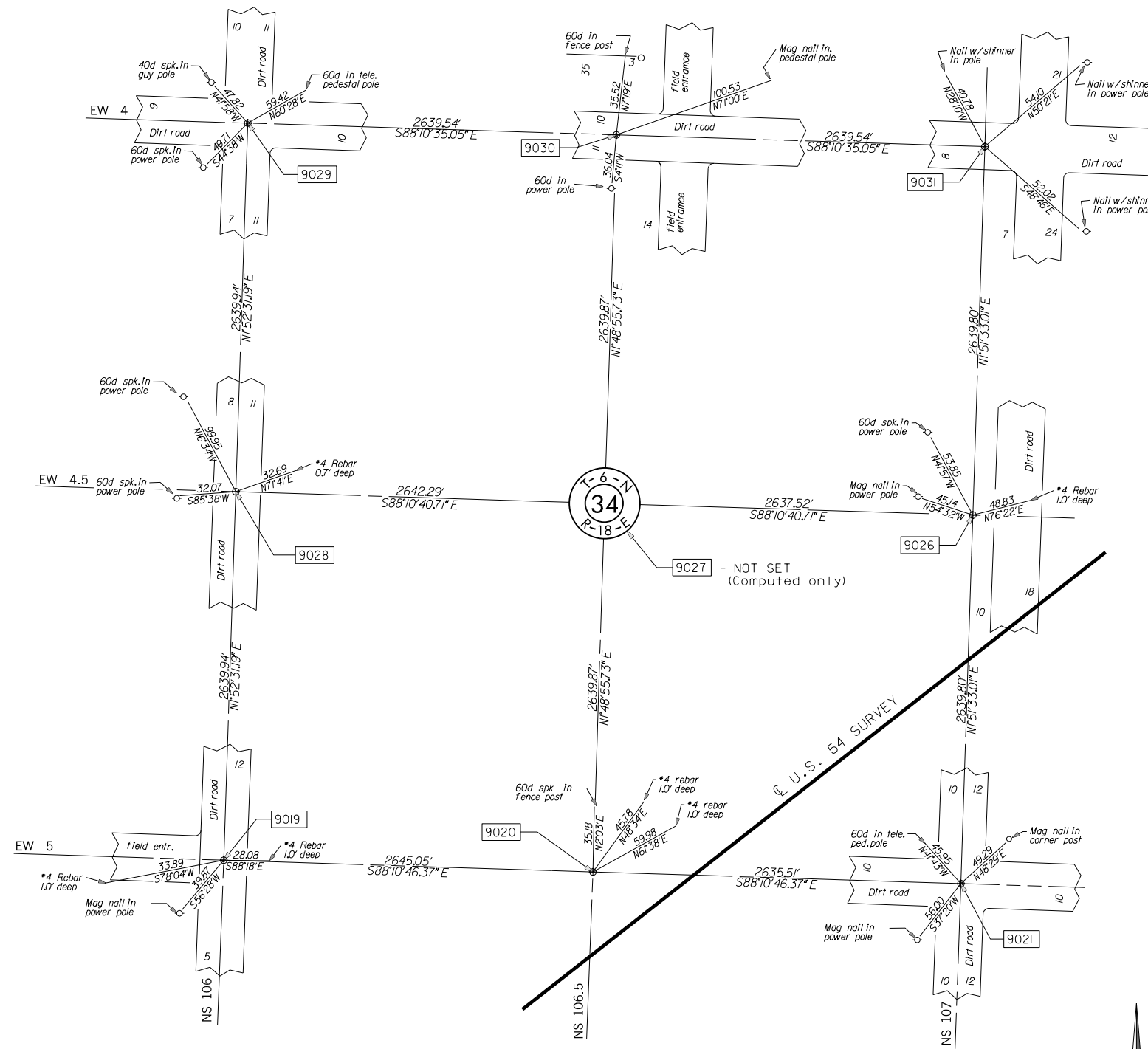
W 1/4 corner of section 34, T-5-N, R-18-E, C.M. ODOT Mon. no. T-70-409. Found #4 Rebar with cap stamped LS1222 (0.3' deep).
 Used as found.

W 1/4 corner of section 35, T-6-N, R-18-E, C.M. ODOT Mon. no. T-70-408
 Found #4 rebar with cap stamped LS1222.
 Used as found.

Found 60d spk., 60d spk. is N50°27'E 19.90' of #4 rebar.

SW corner of section 34, T-6-N, R-18-E, C.M. ODOT Mon. no. T-70-402. Found #7 Rebar (1.0' deep) set by unknown parties.
 Used as found.

SW corner of section 35, T-6-N, R-18-E, C.M. ODOT Mon. no. T-70-404
 Found #7 Rebar (0.3' deep) set by unknown parties.
 Used as found.



S 1/4 corner of section 34, T-6-N, R-18-E, C.M. ODOT Mon. no. T-70-403
 Set #4 rebar w/cap stamped PLS1444 from ties shown on SW02331(1) survey.

SCALE:
 1" = 500'

NOTE: REFERENCES SHOWN ARE NOT TO SCALE

PLS	DKW		OKLAHOMA DEPARTMENT OF TRANSPORTATION		
DRAWN	DKW		SURVEY DIVISION		
CHECKED	JEW	LRT	SURVEY DATA SHEET		
APPROVED					
CREW	CLINTON		SHEET 19 OF 22		
			SWO 4251 (1) PROJECT NO. 20839(08) SHEET NO. 5019		