

OKLAHOMA DEPARTMENT OF TRANSPORTATION					
FED. ROAD DIST. NO.	STATE	PROJ. NO.	FISCAL YEAR	SHEET NO.	TOTAL SHEETS
6	OKLA.			5018	
DESCRIPTION		REVISIONS		DATE	

S 1/4 corner of section 34, T-6-N, R-18-E, C.M. ODOT Mon. no. T-70-403
Set #4 rebar w/cap stamped PLS1444 from ties shown on SW02331(1) survey.

SW corner of section 34, T-6-N, R-18-E, C.M. ODOT Mon. no. T-70-402
Found #7 Rebar (1.0' deep) set by unknown parties.
Used as found.

SW corner of section 35, T-6-N, R-18-E, C.M. ODOT Mon. no. T-70-404. Found #7 Rebar (0.3' deep) set by unknown parties.
Used as found.

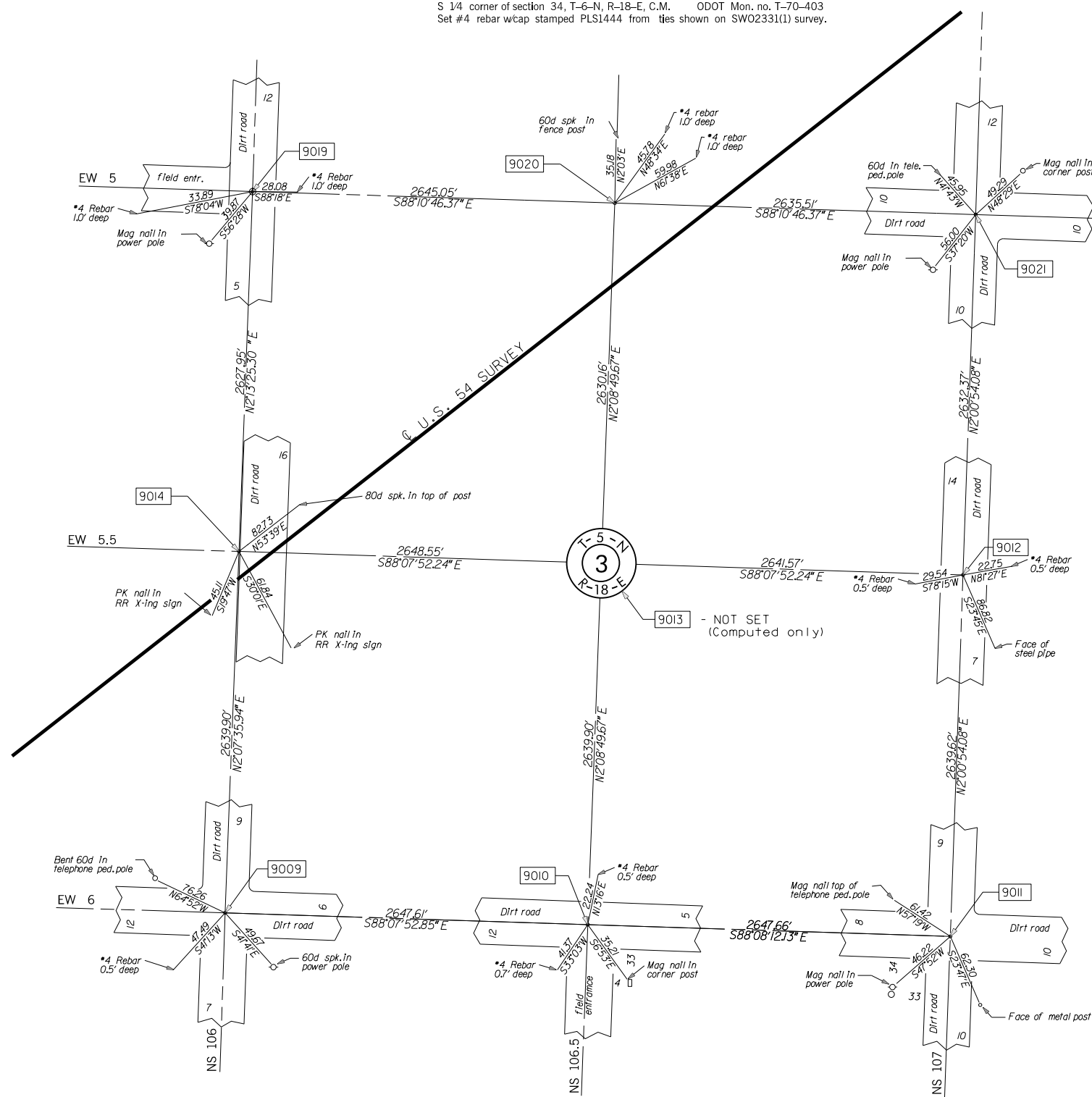
W 1/4 corner of section 3, T-5-N, R-18-E, C.M. ODOT Mon. no. T-70-398. Found 1" sq. rod, fits ties shown on SW02331(1) survey.
Used as found.

W 1/4 corner of section 2, T-5-N, R-18-E, C.M. ODOT Mon. no. T-70-397
Found #4 Rebar with cap stamped LS1222 (0.3' deep).
Used as found.

SW corner of section 3, T-5-N, R-18-E, C.M. ODOT Mon. no. T-70-394. Found 1" sq. rod, fits ties shown on SW02331(1) survey.
Used as found.

Found #4 Rebar with cap stamped LS1222 that is S8°11'W 4.18' of my corner.

SW corner of section 2, T-5-N, R-18-E, C.M. ODOT Mon. no. T-70-396
Found #4 0.3' deep set by unknown parties.
Used as found.



S 1/4 corner of section 3, T-5-N, R-18-E, C.M. ODOT Mon. no. T-70-395
Set #4 rebar with cap stamped PLS1444 by single proration to 1" sq. rod one half mile west and #4 rebar one half mile east.

Found LS1222 corner is S08°11'W 1.86' of my corner.

SCALE:
1" = 500'

NOTE: REFERENCES SHOWN ARE NOT TO SCALE

PLS	DKW		OKLAHOMA DEPARTMENT OF TRANSPORTATION		
DRAWN	DKW		SURVEY DIVISION		
CHECKED	JEW	LRT	SURVEY DATA SHEET		
APPROVED					
CREW	CLINTON	SWO 4251 (1)	PROJECT NO. 20839(08)	SHEET NO. 5018	