

OKLAHOMA DEPARTMENT OF TRANSPORTATION					
FED. ROAD DIST. NO.	STATE	PROJ. NO.	FISCAL YEAR	SHEET NO.	TOTAL SHEETS
6	OKLA.			S017	
DESCRIPTION		REVISIONS		DATE	

S 1/4 corner of section 33, T-6-N, R-18-E, C.M. ODOT Mon. no. T-70-401  
Set #4 rebar stamped PLS1444 by single proportion.

SW corner of section 33, T-6-N, R-18-E, C.M. ODOT Mon. no. T-70-400  
Found #5 rebar set by unknown parties.  
Used as found.

SW corner of section 34, T-6-N, R-18-E, C.M. ODOT Mon. no. T-70-402  
Found #7 Rebar (1.0' deep) set by unknown parties.  
Used as found.

W 1/4 corner of section 4, T-5-N, R-18-E, C.M. ODOT Mon. no. T-70-399  
Set #4 rebar w/cap stamped "PLS1444" by single proportion from  
#4 rebar w/cap stamped "GUNNING 1375 & 806" one half mile  
south and a #5 rebar one half mile north.

Found #4 rebar with cap stamped LS1222 that is N46°24'W 1.24' of my corner.

W 1/4 corner of section 3, T-5-N, R-18-E, C.M. ODOT Mon. no. T-70-398  
Found 1" sq. rod, fits ties shown on SW02331(1) survey.  
Used as found.

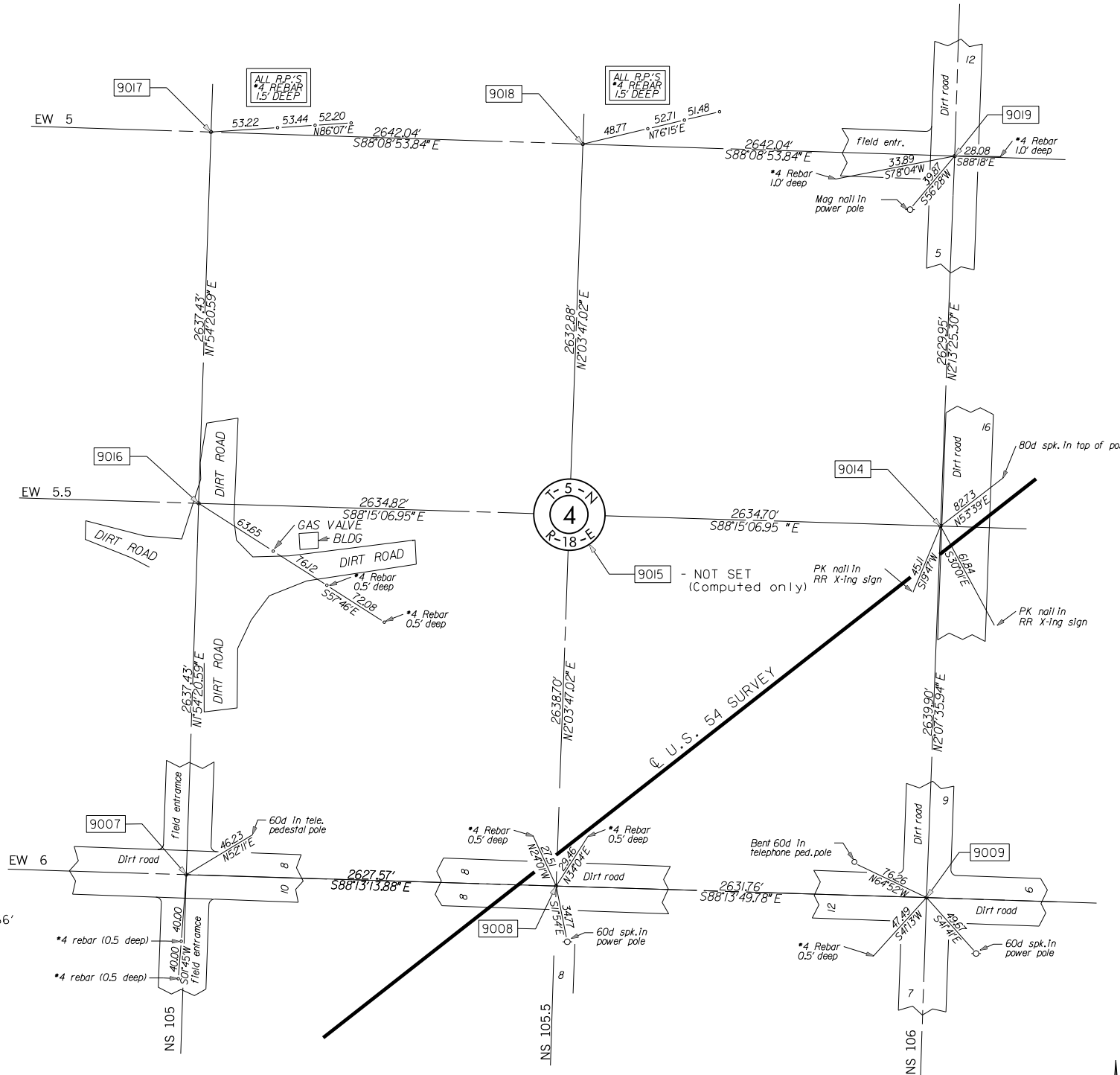
SW corner of section 4, T-5-N, R-18-E, C.M. ODOT Mon. no. T-70-341  
Found #4 rebar (0.5' deep) with cap stamped "GUNNING 1375 & 806"  
set under SW03964(1) survey.

Fits ties shown on SW02331(1) survey. used as found.

Found #5 rebar (0.3' deep) set by unknown parties lying N54°01'W 2.66'  
of my corner.

SW corner of section 3, T-5-N, R-18-E, C.M. ODOT Mon. no. T-70-394  
Found 1" sq. rod, fits ties shown on SW02331(1) survey.  
Used as found.

Found #4 Rebar with cap stamped LS1222 that is S8°11'W 4.18' of my  
corner.



S 1/4 corner of section 4, T-5-N, R-18-E, C.M. ODOT Mon. no. T-70-393  
Found #7 Rebar (0.5' deep) that fits ties shown on SW02331(1) survey.  
Used as found.

SCALE:  
1" = 500'

NOTE: REFERENCES SHOWN ARE NOT TO SCALE

OKLAHOMA DEPARTMENT OF TRANSPORTATION SURVEY DIVISION			
PLS	DKW		
DRAWN	DKW		
CHECKED	JEW	LRT	
APPROVED			
CREW	CLINTON	SWO 4251 (1) PROJECT NO. 20839(08)	SHEET NO. S017

### SURVEY DATA SHEET

SHEET 17 OF 22