

OKLAHOMA DEPARTMENT OF TRANSPORTATION					
FED. ROAD DIST. NO.	STATE	PROJ. NO.	FISCAL YEAR	SHEET NO.	TOTAL SHEETS
6	OKLA.			S016	
DESCRIPTION			REVISIONS	DATE	

S 1/4 corner of section 4, T-5-N, R-18-E, C.M. ODOT Mon. no. T-70-393  
 Found #7 Rebar (0.5' deep) that fits ties shown on SW02331(1) survey.  
 Used as found.

SW corner of section 4, T-5-N, R-18-E, C.M. ODOT Mon. no. T-70-341  
 Found #4 rebar (0.5' deep) with cap stamped 'GUNNING 1375 & 806'  
 set under SW03964(1) survey.

Fits ties shown on SW02331(1) survey. used as found.

Found #5 rebar (0.3' deep) set by unknown parties lying N54°01'W 2.66'  
 of my corner.

W 1/4 corner of section 9, T-5-N, R-18-E, C.M. ODOT Mon. no. T-70-336. Found #4 rebar (0.5' deep) with  
 cap stamped 'GUNNING 1375 & 806'  
 set under SW03964(1) survey.

SW corner of section 9, T-5-N, R-18-E, C.M. ODOT Mon. no. T-70-335  
 Found #4 rebar (0.5' deep) with cap stamped "GUNNING 1375 & 806"  
 set under SW03964(1) survey. Used as found.

Found #4 rebar with cap stamped LSI222 that is S84°W 11.56' of my corner.

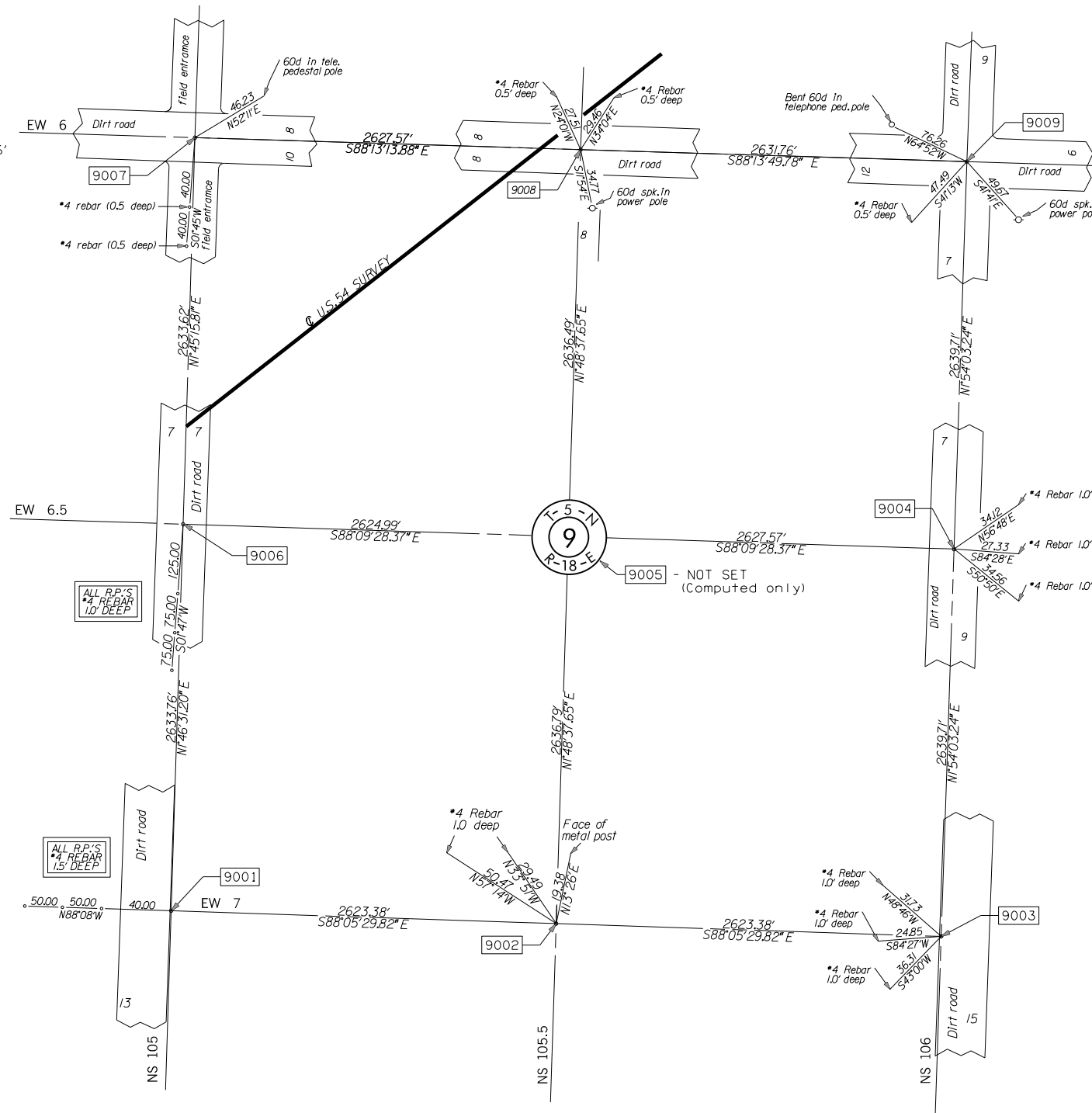
SW corner of section 3, T-5-N, R-18-E, C.M. ODOT Mon. no. T-70-394  
 Found 1" sq. rod, fits ties shown on SW02331(1) survey.  
 Used as found.

Found #4 Rebar with cap stamped LSI222 that is S8°11'W 4.18' of  
 my corner.

W 1/4 corner of section 10, T-5-N, R-18-E, C.M. ODOT Mon. no. T-70-392  
 Set #4 Rebar with cap stamped PLS1444 by single proportion between  
 #5 rebar one half mile south and 1" sq. rod one half mile north.

Found #4 rebar with cap stamped LSI222, corner is S9°51'W 2.05' of  
 my corner.

SW corner of section 10, T-5-N, R-18-E, C.M. ODOT Mon. no. T-70-391  
 Found #5 Rebar set by unknown parties.  
 Used as found



S 1/4 corner of section 9, T-5-N, R-18-E, C.M. ODOT Mon. no. T-70-390  
 Set #4 Rebar with cap stamped PLS1444 by single proportion between  
 Gunnings filed corner one half mile west and found #5 rebar one half mile  
 east.

Found #4 rebar with cap stamped LSI222 that is S83°43'W 5.67' of my corner.

SCALE:  
 1" = 500'

NOTE: REFERENCES SHOWN ARE NOT TO SCALE

PLS	DKW		OKLAHOMA DEPARTMENT OF TRANSPORTATION		
DRAWN	DKW		SURVEY DIVISION		
CHECKED	JEW	LRT	SURVEY DATA SHEET		
APPROVED					
CREW	CLINTON		SHEET 16 OF 22		
			SWO 4251 (1) PROJECT NO. 20839(08) SHEET NO. S016		