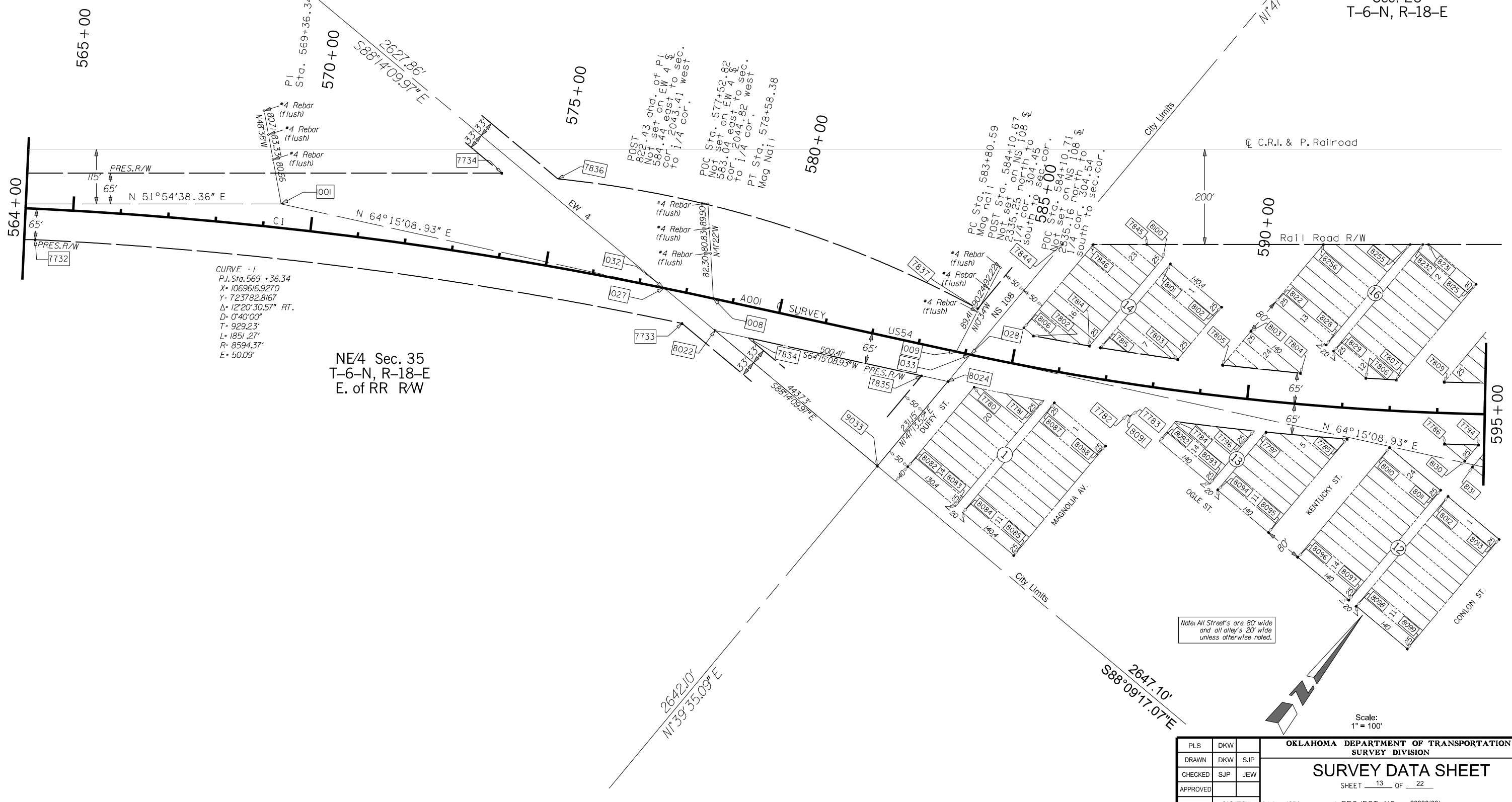


OKLAHOMA DEPARTMENT OF TRANSPORTATION					
FED. ROAD DIST. NO.	STATE	PROJ. NO.	FISCAL YEAR	SHEET NO.	TOTAL SHEETS
6	OKLA.			5013	
DESCRIPTION		REVISIONS		DATE	

NE/4 Sec. 35
T-6-N, R-18-E
W. of RR R/W

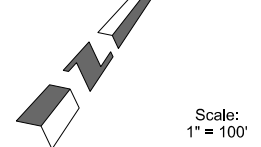
Sec. 26
T-6-N, R-18-E

Sec. 25
T-6-N, R-18-E



NE/4 Sec. 35
T-6-N, R-18-E
E. of RR R/W

Note: All Streets are 80' wide
and all alleys 20' wide
unless otherwise noted.



PLS	DKW		OKLAHOMA DEPARTMENT OF TRANSPORTATION		
DRAWN	DKW	SJP	SURVEY DIVISION		
CHECKED	SJP	JEW	SURVEY DATA SHEET		
APPROVED					
CREW	CLINTON	SWO 4251	PROJECT NO. 20839(08)		SHEET NO. 5013