

OKLAHOMA DEPARTMENT OF TRANSPORTATION					
FED. ROAD DIST. NO.	STATE	PROJ. NO.	FISCAL YEAR	SHEET NO.	TOTAL SHEETS
6	OKLA.			5012	
DESCRIPTION		REVISIONS		DATE	

NW/4 Sec. 35
T-6-N, R-18-E
N. of RR RW

NE/4 Sec. 35
T-6-N, R-18-E
W. of RR RW

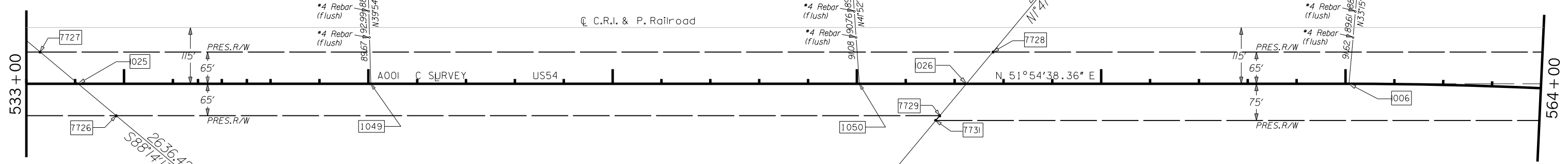
EVT Sta. 534+06.10
Not set on EW 4.5
1395.02 east to
cen. sec. 1241.41
west to 1/4 cor.

POT Sta. 540+05.04
Mag nail

POT Sta. 550+05.00
Mag nail

EVT Sta. 552+23.91
Not set on NS 107.5
1477.26 north to
1/4 cor. 1164.87
south to cen. sec.

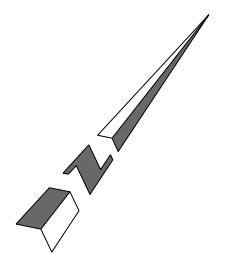
PC Sta. 560+07.10
Mag nail



SW/4 Sec. 35
T-6-N, R-18-E

NW/4 Sec. 35
T-6-N, R-18-E
S.E. of RW

NE/4 Sec. 35
T-6-N, R-18-E
E. of RR RW



Scale:
1" = 100'

PLS	DKW		OKLAHOMA DEPARTMENT OF TRANSPORTATION		
DRAWN	DKW	SJP	SURVEY DIVISION		
CHECKED	SJP	JEW	SURVEY DATA SHEET		
APPROVED					
CREW	CLINTON		SHEET 12 OF 22		
			SWO 4251 () 1 PROJECT NO. 20839(08) SHEET NO. 5012		