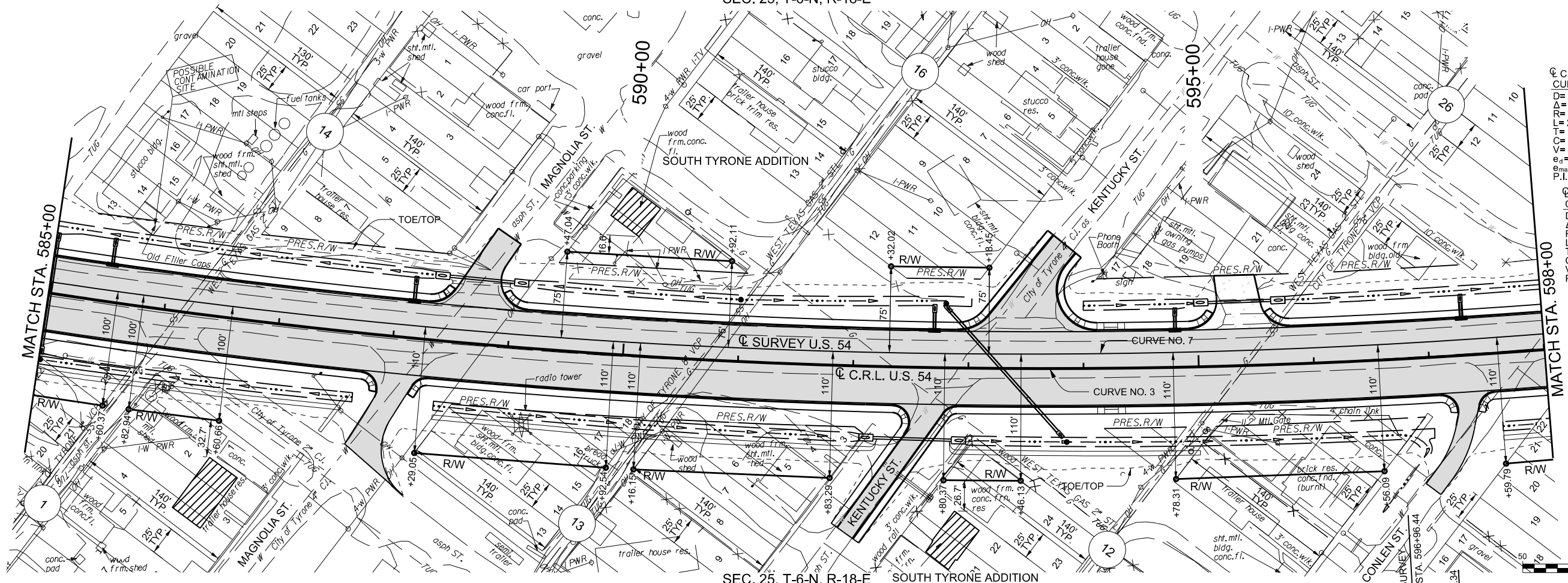


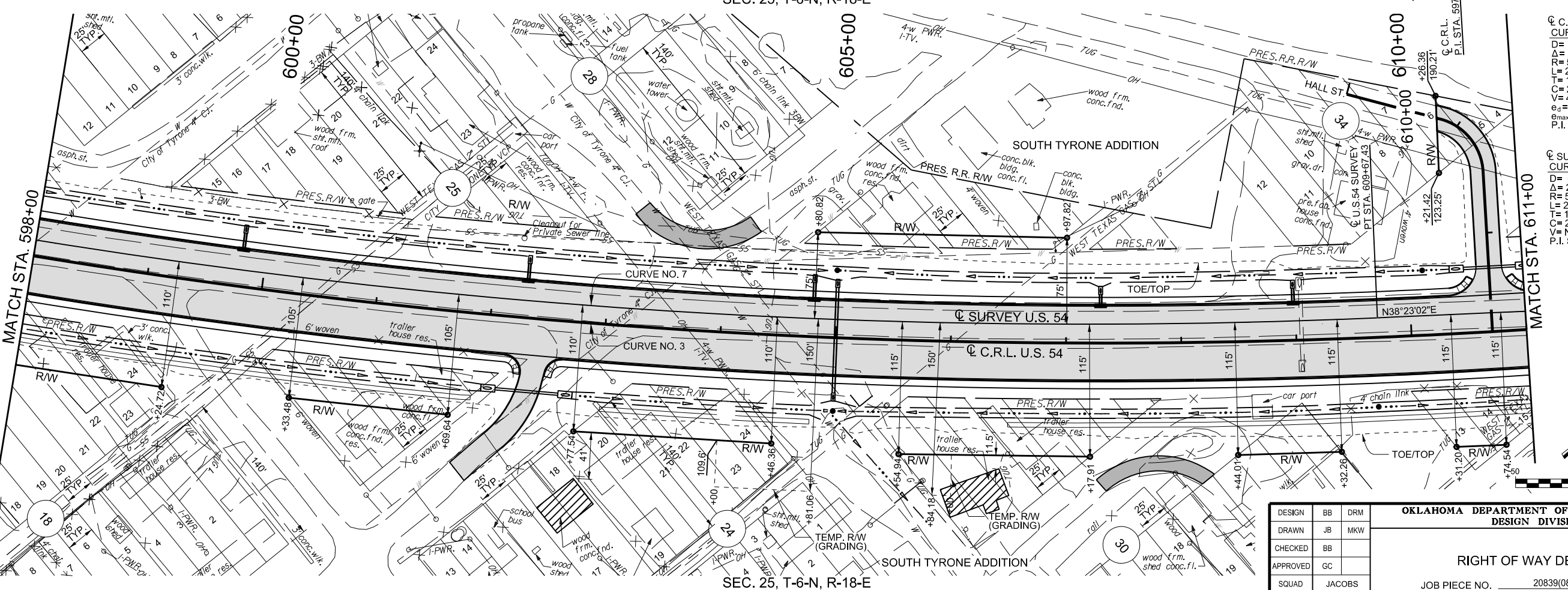
SEC. 25, T-6-N, R-18-E



C.R.L.
 CURVE DATA - Curve No. 3
 D= 01°00'00"
 Δ= 28°47'51" LT.
 R= 5729.58'
 L= 2879.74'
 T= 1470.97'
 C= 2849.52'
 V= 45 MPH
 e_s= RC (2.00%)
 e_{max}= 8.00%
 P.I. STA. 597+45.34

SURVEY U.S.54
 CURVE DATA - Curve No. 7
 D= 01°00'00"
 Δ= 25°52'06" LT.
 R= 5729.58'
 L= 2586.85'
 T= 1315.85'
 C= 2564.93'
 V= N/A
 P.I. STA. 596+96.44

SEC. 25, T-6-N, R-18-E



C.R.L.
 CURVE DATA - Curve No. 3
 D= 01°00'00"
 Δ= 28°47'51" LT.
 R= 5729.58'
 L= 2879.74'
 T= 1470.97'
 C= 2849.52'
 V= 45 MPH
 e_s= RC (2.00%)
 e_{max}= 8.00%
 P.I. STA. 597+45.34

SURVEY U.S.54
 CURVE DATA - Curve No. 7
 D= 01°00'00"
 Δ= 25°52'06" LT.
 R= 5729.58'
 L= 2586.85'
 T= 1315.85'
 C= 2564.93'
 V= N/A
 P.I. STA. 596+96.44

SEC. 25, T-6-N, R-18-E

PRINT DATE: 8/7/2017 F:\job\WKM2300 - EC1335 (TEXAS CO)\700CADD\702CIVIL\WKM2300.RW3.dgn

DESIGN	BB	DRM
DRAWN	JB	MKW
CHECKED	BB	
APPROVED	GC	
SQUAD	JACOBS	

OKLAHOMA DEPARTMENT OF TRANSPORTATION
 DESIGN DIVISION
 RIGHT OF WAY DETAIL (3)
 JOB PIECE NO. 20839(08) SHEET NO. R035