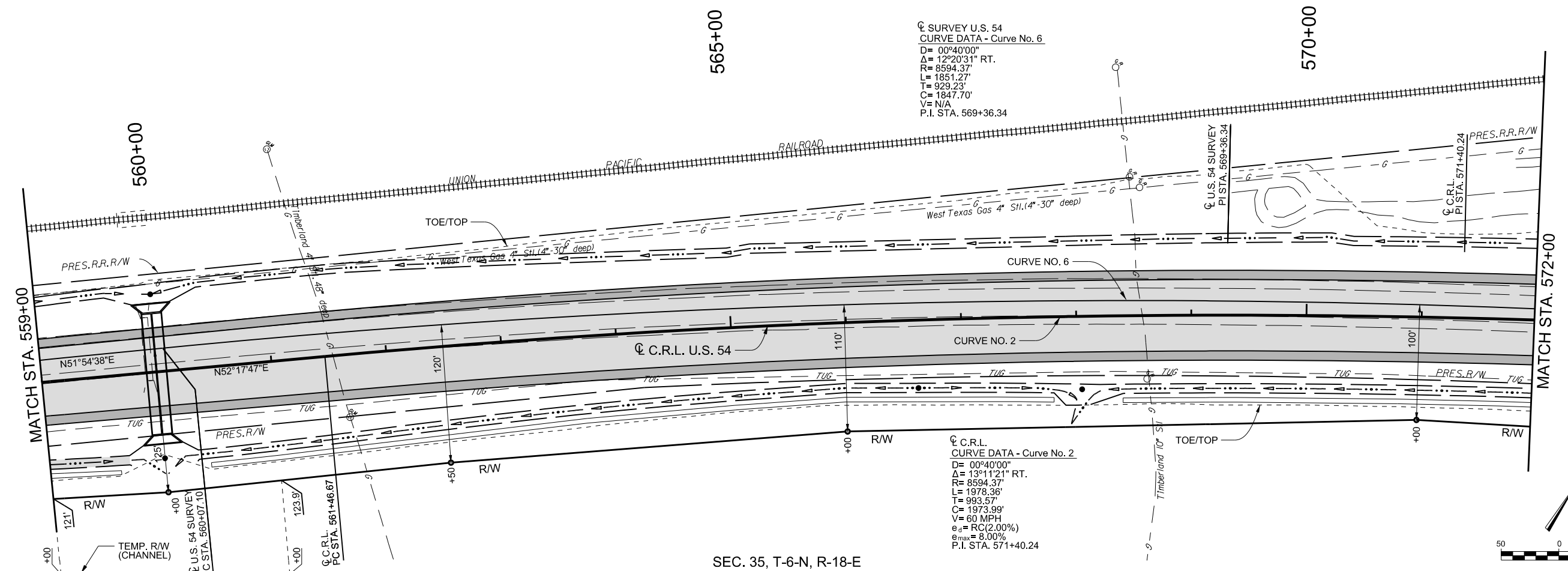


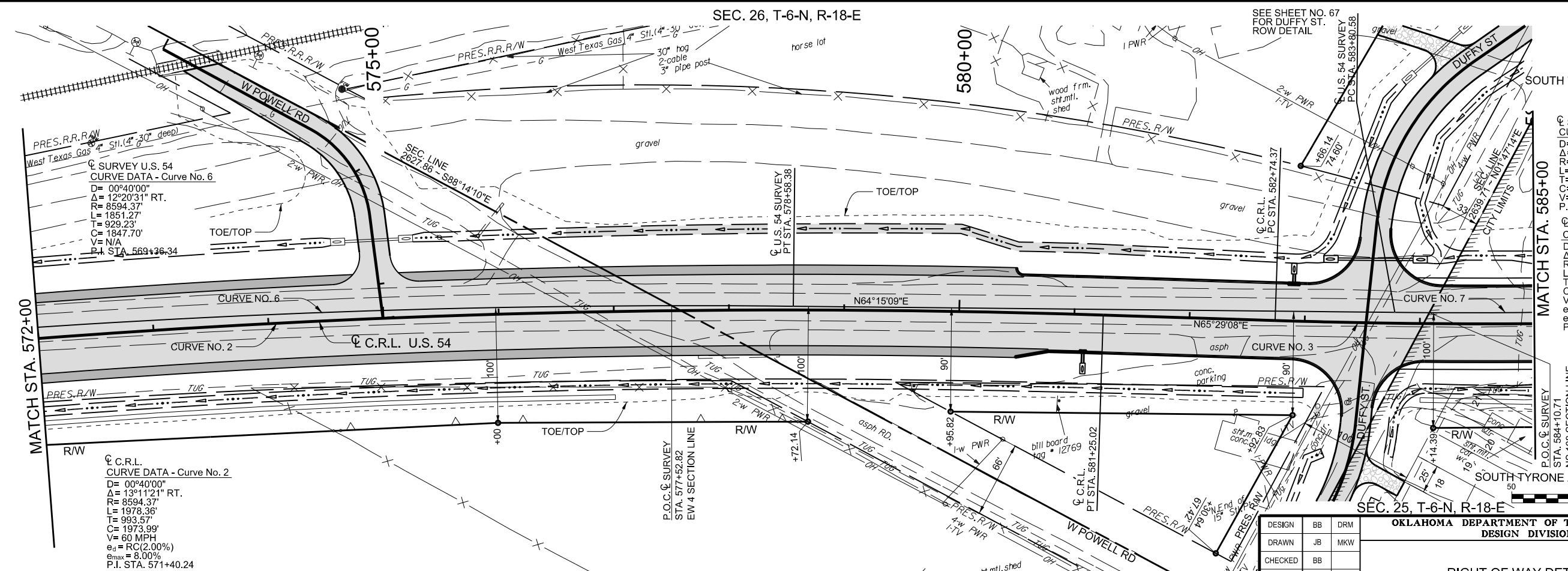
SURVEY U.S. 54  
 CURVE DATA - Curve No. 6  
 D= 00°40'00"  
 Δ= 12°20'31" RT.  
 R= 8594.37'  
 L= 1851.27'  
 T= 929.23'  
 C= 1847.70'  
 V= N/A  
 P.I. STA. 569+36.34

C.R.L.  
 CURVE DATA - Curve No. 2  
 D= 00°40'00"  
 Δ= 13°11'21" RT.  
 R= 8594.37'  
 L= 1978.36'  
 T= 993.57'  
 C= 1973.99'  
 V= 60 MPH  
 e<sub>d</sub> = RC(2.00%)  
 e<sub>max</sub> = 8.00%  
 P.I. STA. 571+40.24



SEC. 35, T-6-N, R-18-E

SEC. 26, T-6-N, R-18-E



C.R.L.  
 CURVE DATA - Curve No. 2  
 D= 00°40'00"  
 Δ= 13°11'21" RT.  
 R= 8594.37'  
 L= 1978.36'  
 T= 993.57'  
 C= 1973.99'  
 V= 60 MPH  
 e<sub>d</sub> = RC(2.00%)  
 e<sub>max</sub> = 8.00%  
 P.I. STA. 571+40.24

SURVEY U.S. 54  
 CURVE DATA - Curve No. 6  
 D= 00°40'00"  
 Δ= 12°20'31" RT.  
 R= 8594.37'  
 L= 1851.27'  
 T= 929.23'  
 C= 1847.70'  
 V= N/A  
 P.I. STA. 569+36.34

C.R.L.  
 CURVE DATA - Curve No. 3  
 D= 01°00'00"  
 Δ= 28°47'51" LT.  
 R= 5729.58'  
 L= 2879.74'  
 T= 1470.97'  
 C= 2849.52'  
 V= 45 MPH  
 e<sub>d</sub> = RC(2.00%)  
 e<sub>max</sub> = 8.00%  
 P.I. STA. 597+45.34

P.O.C. SURVEY  
 STA. 577+52.82  
 EW 4 SECTION LINE

C.R.L.  
 PI STA. 581+25.02

C.R.L.  
 PC STA. 582+74.37

P.O.C. SURVEY  
 STA. 584+10.71  
 NS 108 SECTION LINE

DESIGN	BB	DRM
DRAWN	JB	MKW
CHECKED	BB	
APPROVED	GC	
SQUAD	JACOBS	

OKLAHOMA DEPARTMENT OF TRANSPORTATION  
DESIGN DIVISION

RIGHT OF WAY DETAIL (2)

JOB PIECE NO. 20839(08) SHEET NO. R034

SEC. 35, T-6-N, R-18-E

PRINT DATE: 8/7/2017 F:\job\WKX2300 - EC1335 (TEXAS CO)\700CADD\702CIVIL\WKX2300.RW2.dgn