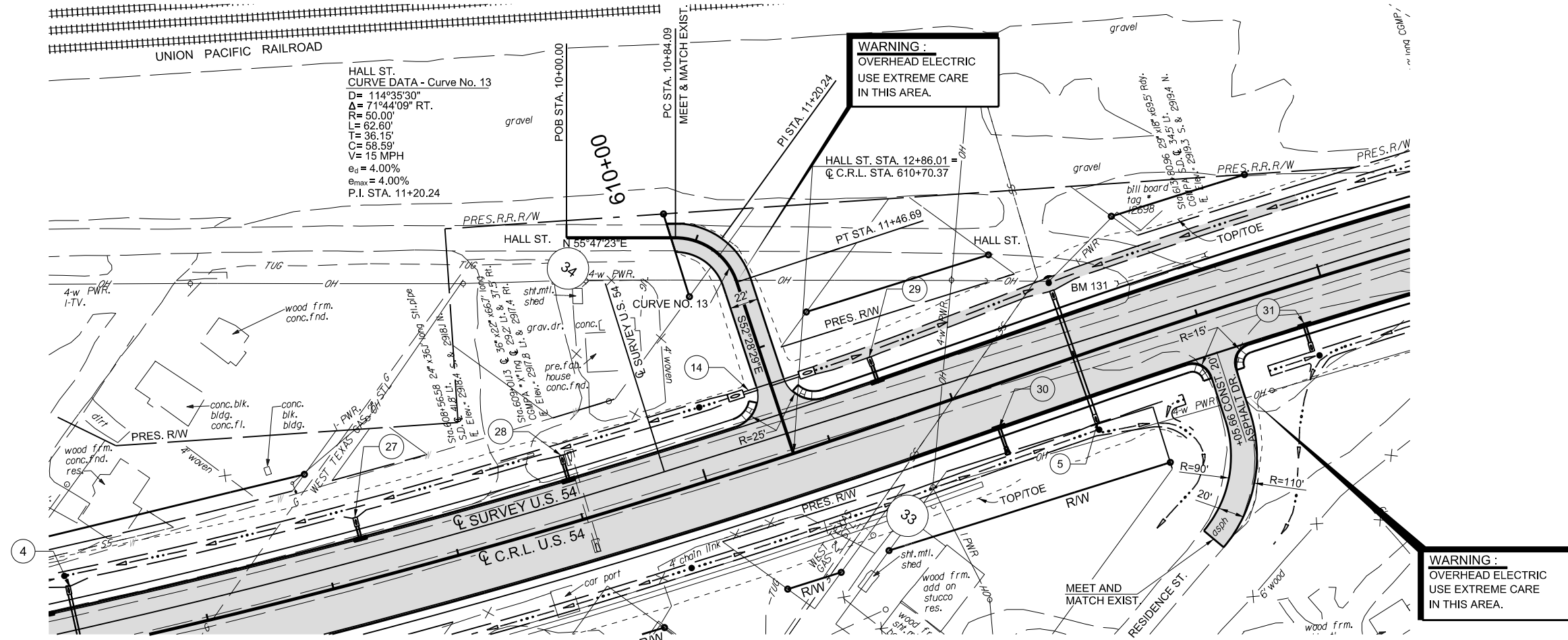
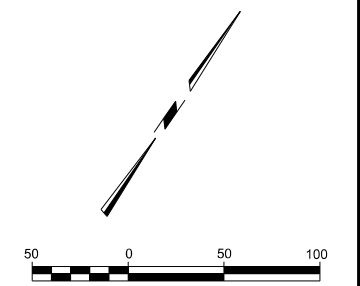


SEC. 25, T-6-N, R-18-E



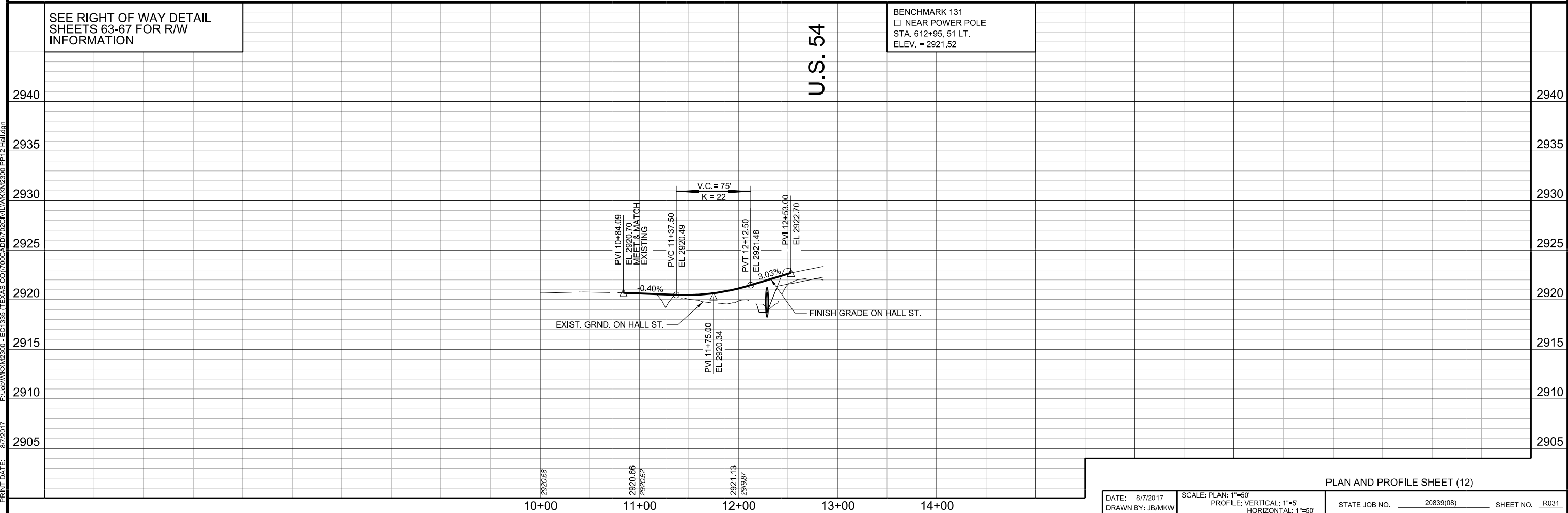
SEC. 25, T-6-N, R-18-E



SEE RIGHT OF WAY DETAIL SHEETS 63-67 FOR R/W INFORMATION

U.S. 54

BENCHMARK 131
 □ NEAR POWER POLE
 STA. 612+95, 51 LT.
 ELEV. = 2921.52



PLAN AND PROFILE SHEET (12)

PRINT DATE: 8/7/2017 F:\Job\WKM2300 - EC1335 (TEXAS CO)\700CADD\702CIVIL\WKM2300_PP12_Hall.dgn