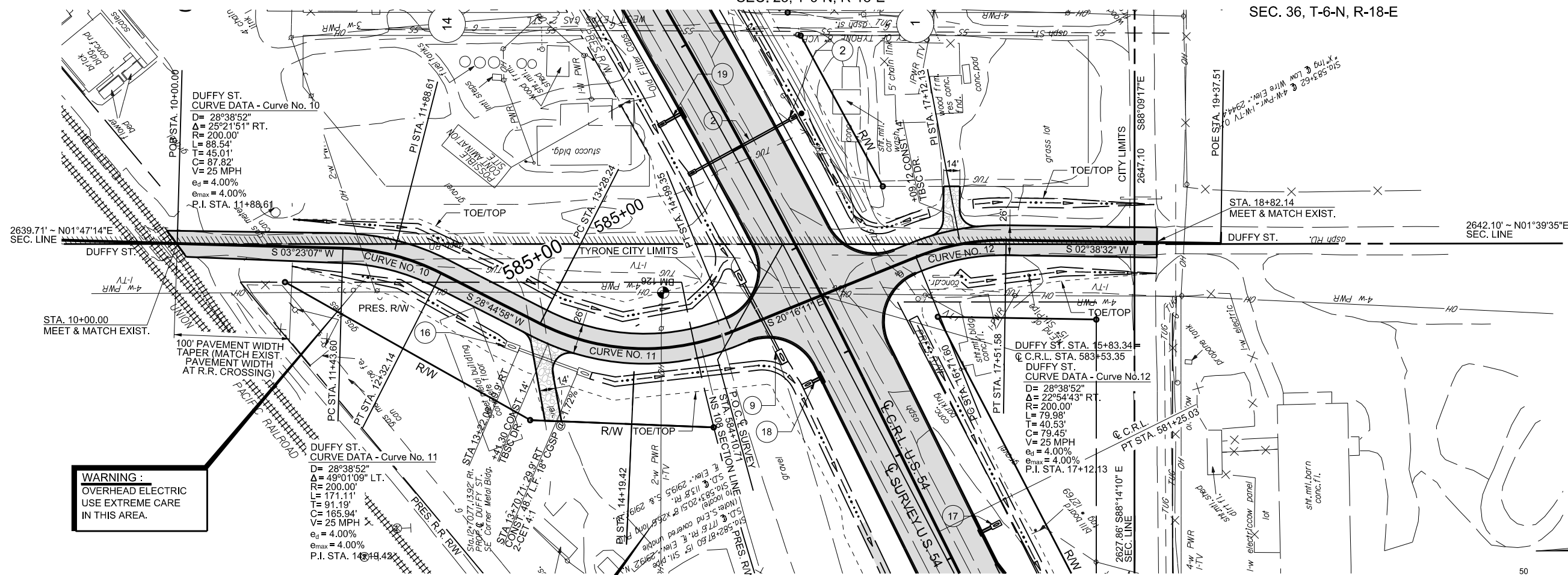


SEC. 25, T-6-N, R-18-E

SEC. 36, T-6-N, R-18-E



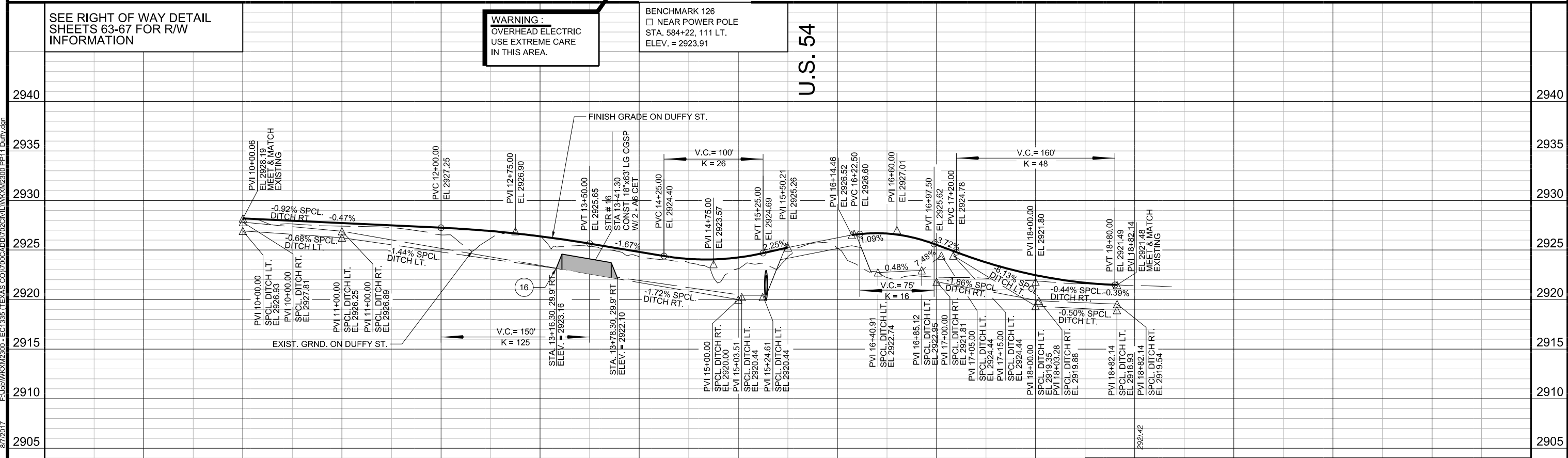
WARNING :
OVERHEAD ELECTRIC
USE EXTREME CARE
IN THIS AREA.

WARNING :
OVERHEAD ELECTRIC
USE EXTREME CARE
IN THIS AREA.

BENCHMARK 126
□ NEAR POWER POLE
STA. 584+22, 111 LT.
ELEV. = 2923.91

U.S. 54

SEE RIGHT OF WAY DETAIL
SHEETS 63-67 FOR R/W
INFORMATION



19+00

PLAN AND PROFILE SHEET (11)

DATE: 8/7/2017 SCALE: PLAN: 1"=50'
 DRAWN BY: JBM/KW PROFILE: VERTICAL: 1"=5'
 HORIZONTAL: 1"=50'

STATE JOB NO. 20839(08) SHEET NO. R030

PRINT DATE: 8/7/2017 F:\Jobs\WK2300 - EC1335 (TEXAS GOV)\700CADD\702CIVIL\WK2300_PP11_Duffy.dwg