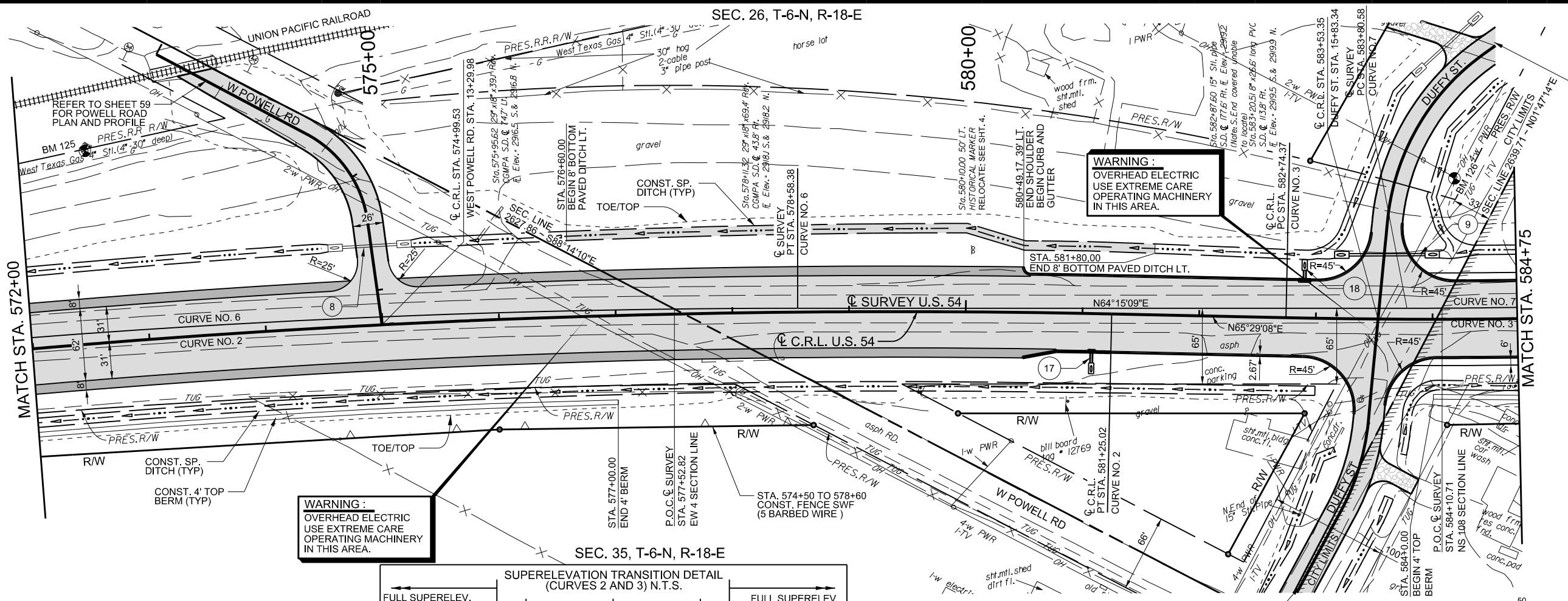


SEC. 26, T-6-N, R-18-E

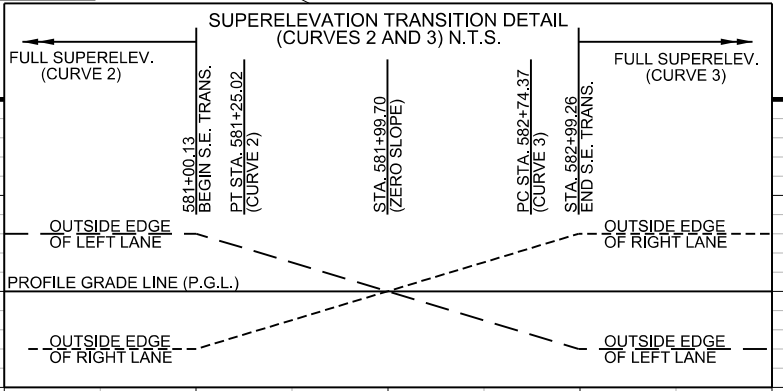
SEC. 35, T-6-N, R-18-E

SEC. 25, T-6-N, R-18-E



WARNING:
OVERHEAD ELECTRIC
USE EXTREME CARE
OPERATING MACHINERY
IN THIS AREA.

WARNING:
OVERHEAD ELECTRIC
USE EXTREME CARE
OPERATING MACHINERY
IN THIS AREA.



2940	SEE RIGHT OF WAY DETAIL SHEETS 63-67 FOR R/W INFORMATION.	BENCHMARK 125 □ RIGHT OF WAY MARKER STA. 572+58, 156 LT. ELEV. = 2920.00		2940									
2935	REFER TO DRAINAGE DETAIL SHEETS FOR PROPOSED DRAINAGE STRUCTURE INFORMATION.			2935									
2930				2930									
2925				2925									
2920				2920									
2915				2915									
2910				2910									
2905				2905									
2900				2900									
	MATCH STA. 572+00		MATCH STA. 584+75										
	572	573	574	575+00	576	577	578	579	580+00	581	582	583	584

REFER TO SHEET 60 FOR DUFFY STREET PLAN AND PROFILE

REFER TO SHEET 60 FOR DUFFY STREET PLAN AND PROFILE

BENCHMARK 126
□ NEAR POWER POLE
STA. 584+22, 111 LT.
ELEV. = 2923.91

PRINT DATE: 8/7/2017 F:\Jobs\WKM2300 - EC1335 (TEXAS CO)\700CADD\702CIVIL\WKM2300_PP4.dgn