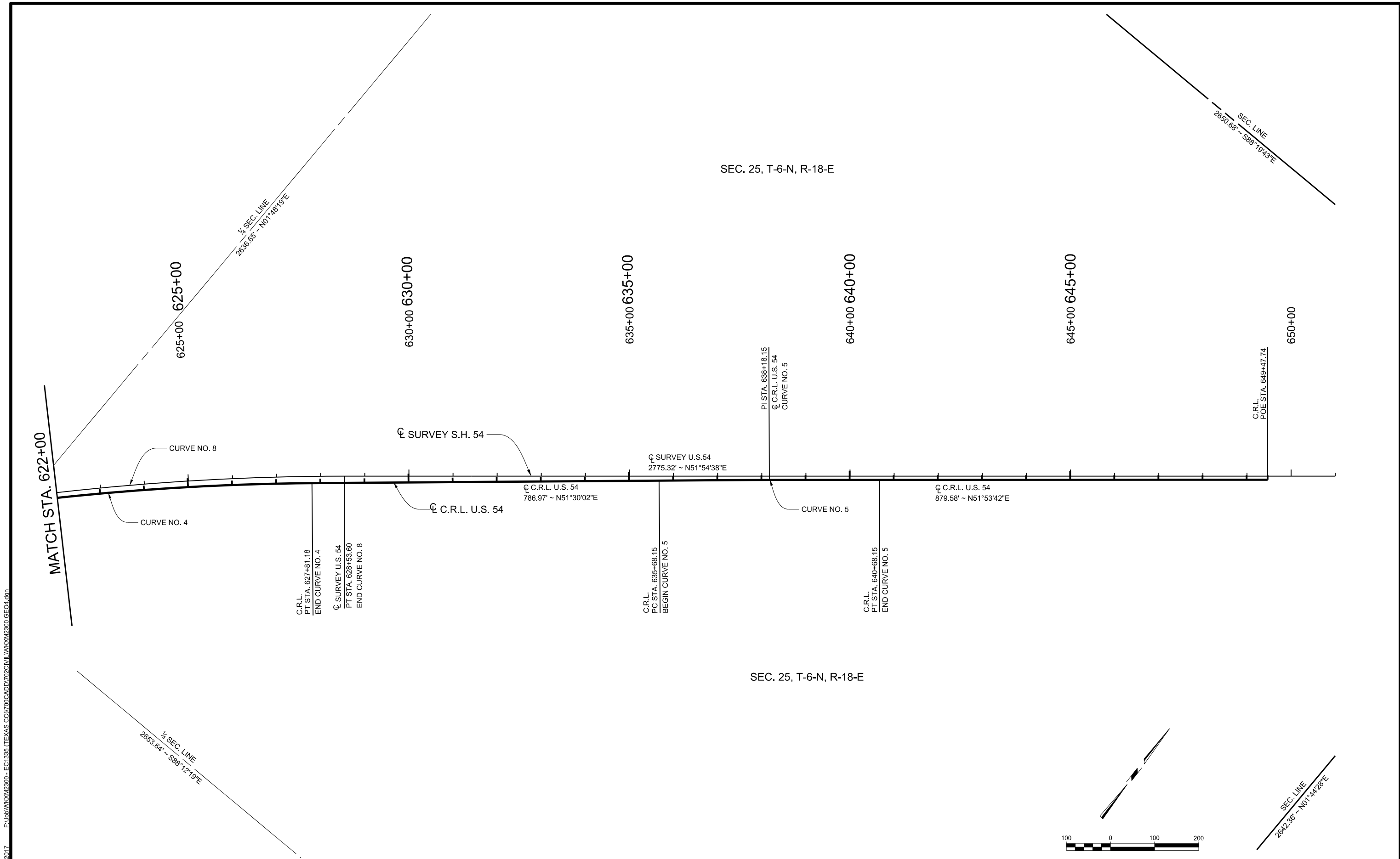
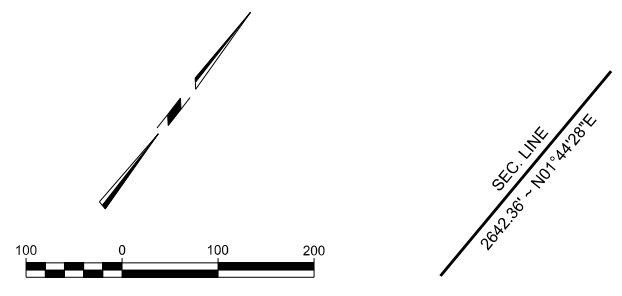


PRINT DATE: 8/7/2017 F:\Jobs\WKM2300 - EC1335 (TEXAS CO)\700\CADD\702\CIVIL\WKM2300.GEO4.dgn



CURVE NO.	P.I.		P.C.			CURVE DATA		Δ	D	T (FT.)	R (FT.)	E (FT.)	L (FT.)	e _d (%)	V MPH	P.T.		
	STATION	NORTH COOR.	EAST COOR.	STATION	NORTH COOR.	EAST COOR.	STATION									NORTH COOR.	EAST COOR.	
CURVE 4	620+44.71	726865.0747	1073583.6458	612+99.92	726267.8343	1073138.6695	14°48'45" RT.	01°00'00"	744.78	5729.58	48.20	1481.26	2.60%	55	627+81.18	727328.7054	1074166.5235	
CURVE 5	638+18.15	727974.2255	1074978.0729	635+68.15	727818.5985	1074782.4183	00°23'39" RT.	00°04'44"	250.00	72660.66	0.43	500.00	NC (2.0%)	75	640+68.15	728128.5024	1075174.7938	
CURVE 8	621+80.43	726967.2252	1073679.7096	615+00.94	726434.5953	1073257.7940	13°31'36" RT.	01°00'00"	679.49	5729.58	40.15	1352.66	2.00%	N/A	628+53.60	727386.3958	1074214.5024	



DESIGN	BB	DRM	OKLAHOMA DEPARTMENT OF TRANSPORTATION DESIGN DIVISION GEOMETRIC DATA SHEET (4) JOB PIECE NO. 20839(08) SHEET NO. R013
DRAWN	JB	MKW	
CHECKED	BB		
APPROVED	GC		
SQUAD	JACOBS		