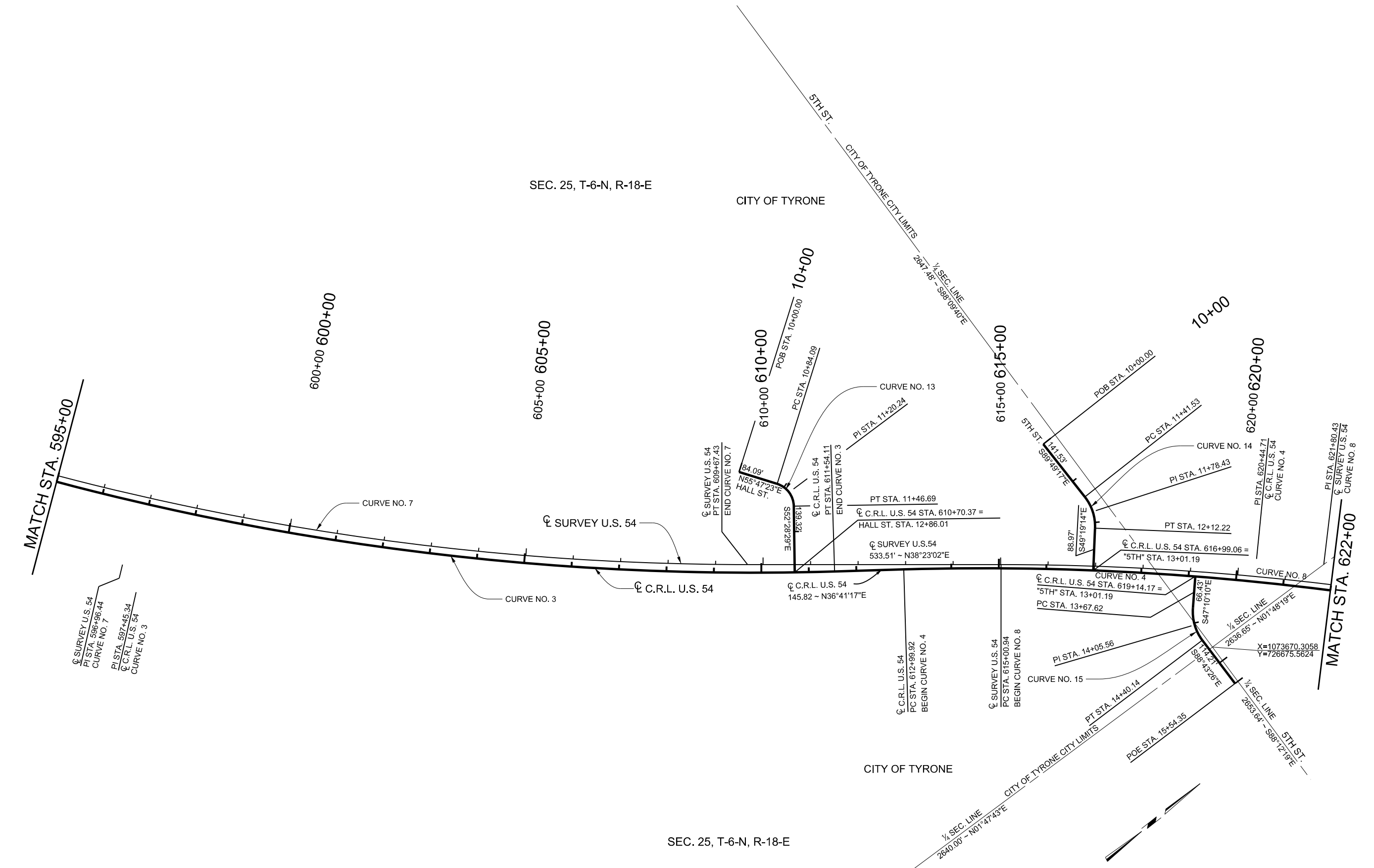


PRINT DATE: 8/7/2017 F:\Job\WKM2300 - EC1335 (TEXAS CO)\700CADD\702CIVIL\WKM2300.GEO3.dwg



CURVE NO.	P.I. STATION	CURVE DATA		P.C. STATION	CURVE DATA		Δ	D	T (FT.)	R (FT.)	E (FT.)	L (FT.)	e _d (%)	V MPH	P.T.		
		NORTH COOR.	EAST COOR.		NORTH COOR.	EAST COOR.									STATION	NORTH COOR.	EAST COOR.
CURVE 3	597+45.34	724971.3367	1072172.7088	582+74.37	724360.9976	1070834.3413	28°47'51" LT.	01°00'00"	1470.97	5729.58	185.81	2879.74	RC (2.0%)	45	611+54.11	726150.9041	1073051.5502
CURVE 4	620+44.71	726865.0747	1073583.6458	612+99.92	726267.8343	1073138.6695	14°48'45" RT.	01°00'00"	744.78	5729.58	48.20	1481.26	2.60%	55	627+81.18	727328.7054	1074166.5235
CURVE 7	596+96.44	724984.9455	1072109.4737	583+80.58	724413.3314	1070924.2639	25°52'08" LT.	01°00'00"	1315.85	5729.58	149.16	2586.85	2.00%	N/A	609+67.43	726016.3975	1072926.5243
CURVE 8	621+80.43	726967.2252	1073679.7096	615+00.94	726434.5953	1073257.7940	13°31'38" RT.	01°00'00"	679.49	5729.58	40.15	1352.66	2.00%	N/A	628+53.60	727386.3958	1074214.5024
CURVE 13	11+20.24	726190.9988	1072861.8641	10+84.09	726170.6734	1072831.9678	71°44'09" RT.	114°35'30"	36.15	50.00	11.70	62.60	4.00%	15	11+46.69	726168.9786	1072890.5351
CURVE 14	11+78.43	726661.3772	1073292.6300	11+41.53	726661.4922	1073255.7374	40°30'03" RT.	57°17'45"	36.89	100.00	6.59	70.69	4.00%	20	12+12.22	726637.3296	1073320.6083
CURVE 15	14+05.56	726668.8485	1073607.8691	13+67.62	726694.6419	1073580.0445	41°33'16" LT.	57°17'45"	37.94	100.00	6.96	72.53	4.00%	20	14+40.14	726668.0035	1073645.8006



DESIGN	BB	DRM	OKLAHOMA DEPARTMENT OF TRANSPORTATION DESIGN DIVISION GEOMETRIC DATA SHEET (3) JOB PIECE NO. 20839(08) SHEET NO. R012
DRAWN	JB	MKW	
CHECKED	BB		
APPROVED	GC		
SQUAD	JACOBS		