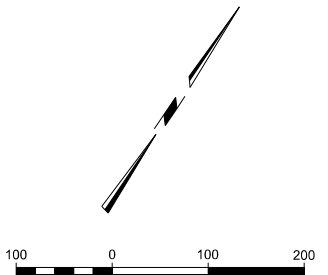
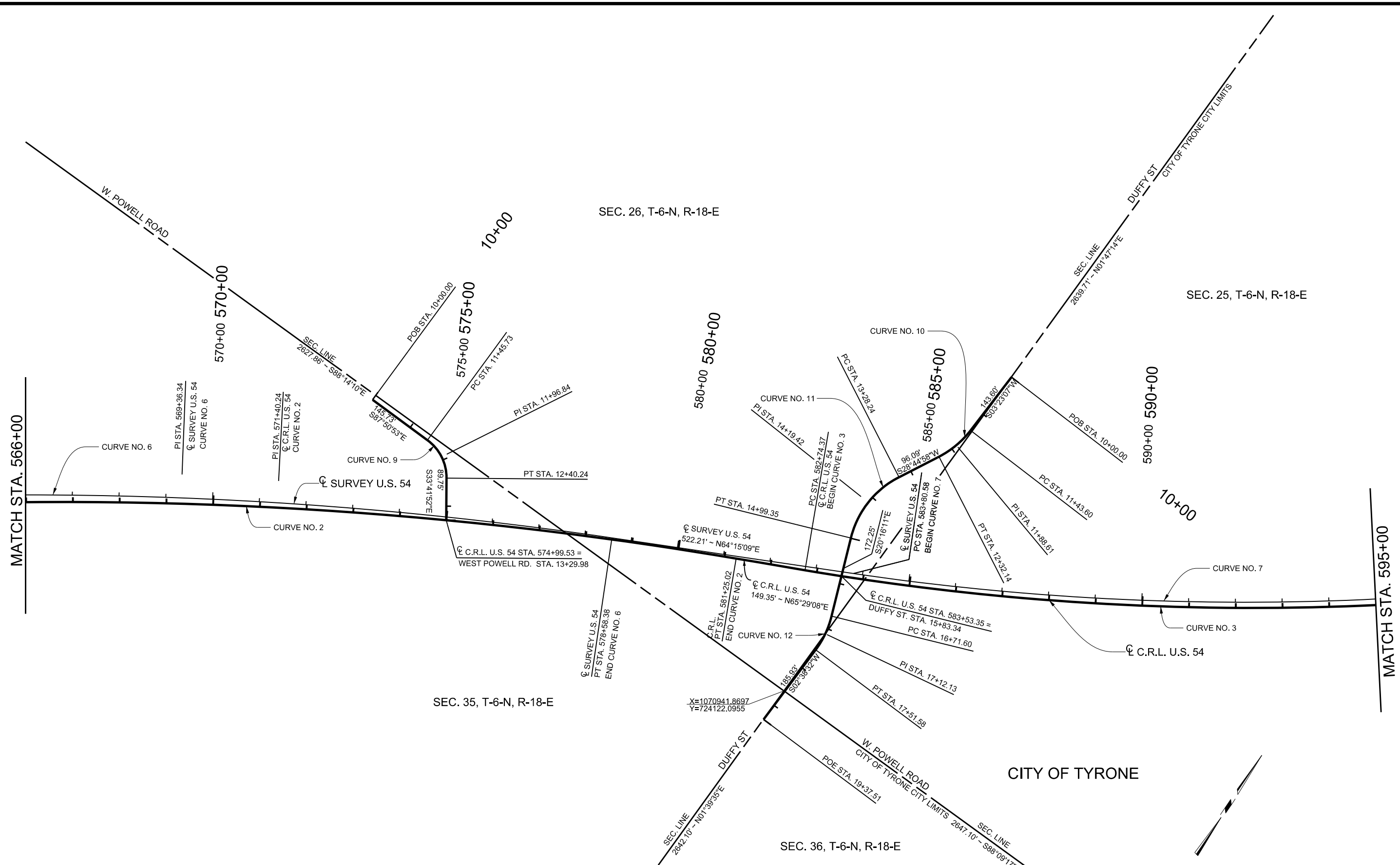


PRINT DATE: 8/7/2017 F:\Job\WKM2300 - EC1335 (TEXAS CO)\700CADD\702CIVIL\WKM2300.GEO2.dwg



CURVE NO.	P.I.		P.C.		P.T.		Δ	D	T (FT.)	R (FT.)	E (FT.)	L (FT.)	e <sub>a</sub> (%)	V MPH	P.T.		
	STATION	NORTH COOR.	EAST COOR.	STATION	NORTH COOR.	EAST COOR.									STATION	NORTH COOR.	EAST COOR.
CURVE 2	571+40.24	723886.7744	1069794.4523	561+46.67	723279.1308	1069008.3545	13°11'21" RT.	00°40'00"	993.57	8594.37	57.24	1978.36	RC (2.0%)	60	581+25.02	724299.0303	1070698.4577
CURVE 3	597+45.34	724971.3367	1072172.7088	582+74.37	724360.9976	1070834.3413	28°47'51" LT.	01°00'00"	1470.97	5729.58	185.81	2879.74	RC (2.0%)	45	611+54.11	726150.9041	1073051.5502
CURVE 6	569+36.34	723782.8167	1069816.9270	560+07.10	723209.5828	1068885.5746	12°20'31" RT.	00°40'00"	929.23	8594.37	50.09	1851.27	2.00%	N/A	578+58.38	724186.4812	1070453.9027
CURVE 7	596+96.44	724984.9455	1072109.4737	583+80.58	724413.3314	1070924.2639	25°52'06" LT.	01°00'00"	1315.85	5729.58	149.16	2586.85	2.00%	N/A	609+67.43	726016.3975	1072926.5243
CURVE 9	11+96.84	724136.2223	1070061.1353	11+45.73	724138.1417	1070010.0534	54°09'01" RT.	57°17'45"	51.12	100.00	12.31	94.51	4.00%	20	12+40.24	724093.6934	1070089.4962
CURVE 10	11+88.61	724762.2431	1070957.0101	11+43.60	724807.1709	1070959.6678	25°21'51" RT.	28°38'52"	45.01	200.00	5.00	88.54	4.00%	25	12+32.14	724722.7847	1070935.3629
CURVE 11	14+19.42	724558.5900	1070845.2845	13+28.24	724638.5354	1070889.1432	49°01'09" LT.	28°38'52"	91.19	200.00	19.81	171.11	4.00%	25	14+99.35	724473.0511	1070876.8750
CURVE 12	17+12.13	724273.4466	1070950.5912	16+71.60	724311.4670	1070936.5498	22°54'43" RT.	28°38'52"	40.53	200.00	4.07	79.98	4.00%	25	17+51.58	724232.9593	1070948.7228

DESIGN	BB	DRM	<b>OKLAHOMA DEPARTMENT OF TRANSPORTATION</b> <b>DESIGN DIVISION</b>  <b>GEOMETRIC DATA SHEET (2)</b>  JOB PIECE NO. 20839(08) SHEET NO. R011
DRAWN	JB	MKW	
CHECKED	BB		
APPROVED	GC		
SQUAD	JACOBS		