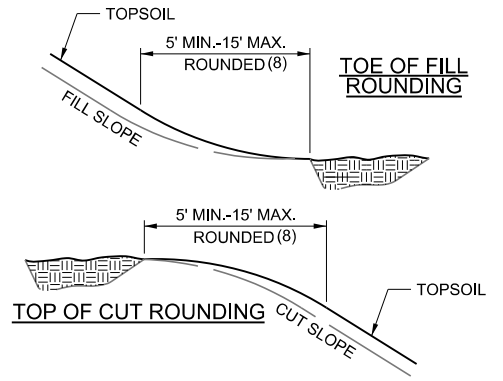
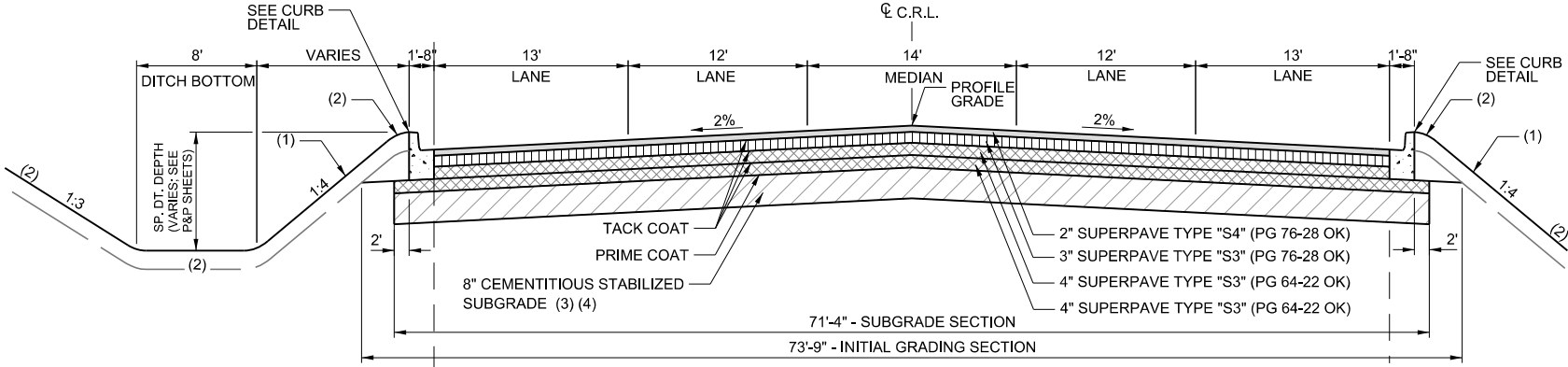


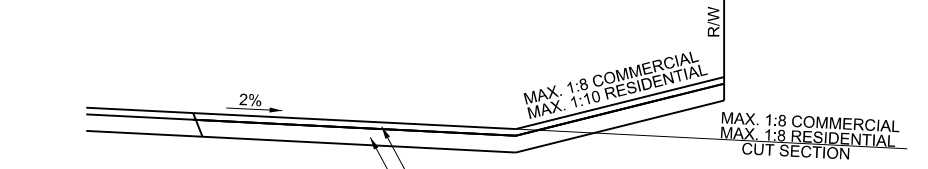
TYPICAL SECTION (4)
N.T.S.
STA. 561+96.63 TO STA. 580+49.17
STA. 618+29.72 TO STA. 627+39.77



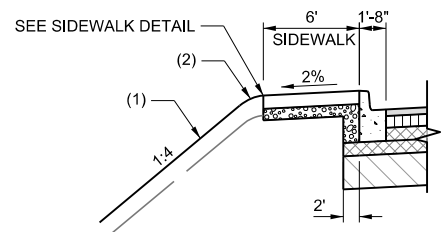
ROUNDING DETAIL
N.T.S.



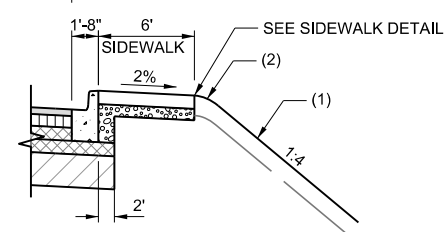
TYPICAL SECTION (5)
N.T.S.
CURB SECTION LIMITS STA. 580+49.17 TO STA. 618+29.72
CURB SECTION LIMITS STA. 580+49.17 TO STA. 618+29.72



TYPICAL DRIVEWAY DETAIL
N.T.S.
NOTE: SEE RURAL DRIVEWAY INSTALLATION STANDARD (RDI-3-0)

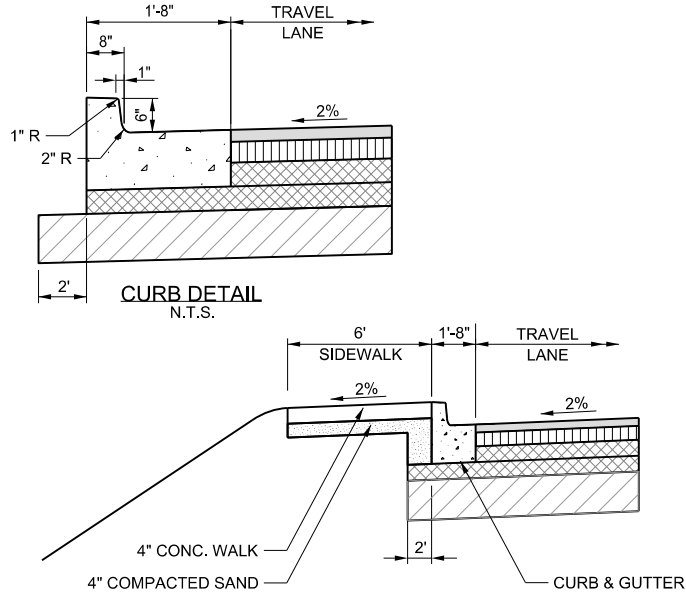


SIDEWALK SECTION (LT.) LIMITS
STA. 583+96.88 TO STA. 616+77.30

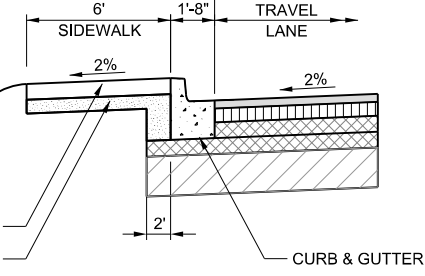


SIDEWALK SECTION (RT.) LIMITS
STA. 583+81.99 TO STA. 618+29.72

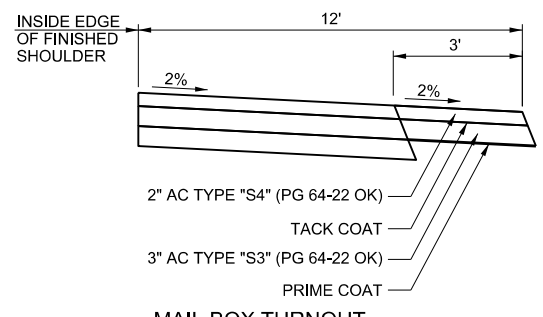
TYPICAL SECTION (5)
N.T.S.
STA. 580+49.17 TO STA. 618+29.72



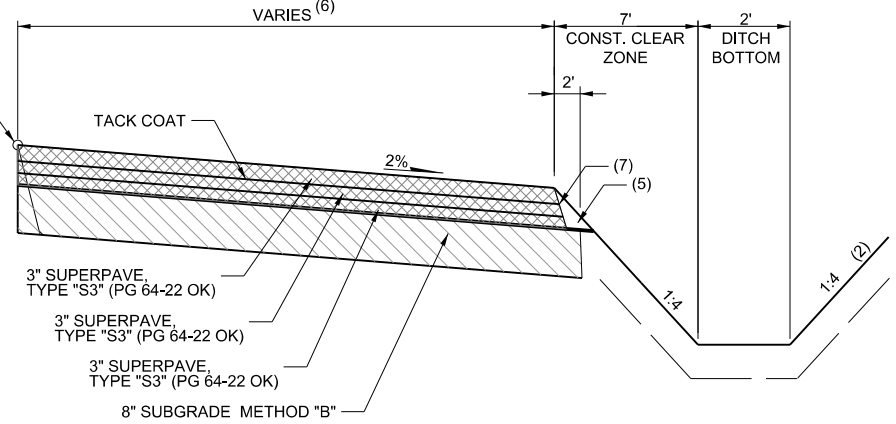
CURB DETAIL
N.T.S.



SIDEWALK DETAIL
N.T.S.



MAIL BOX TURNOUT
N.T.S.



TEMP. WIDENING TYPICAL SECTION NO. (2)
N.T.S.

STA. 534+20 TO STA. 543+19.08 (PHASE 2)
STA. 643+50.00 TO STA. 659+58 (PHASE 2)

ALL STATIONING IS BASED ON C.R.L.

- NOTES:
- TOPSOIL NOTE: THE CONTRACTOR SHALL STRIP ALL OF THE AVAILABLE TOPSOIL, APPROXIMATELY 5" THICK, STOCKPILE IT AND PLACE IT BACK ON THE SECTION IN ACCORDANCE WITH SECTION 205 OF THE STANDARD SPECIFICATION. RESERVED TOPSOIL SHALL BE SPREAD FIRST ON THE COMPLETED SLOPES OF THE CUT SECTIONS AND THE REMAINDER ON COMPLETED FILL SLOPES OR OTHER PRIORITY AREAS LOCATED BY THE ENGINEER. ALL ADDITIONAL COSTS ASSOCIATED WITH OPERATION SHALL BE INCLUDED IN THE PAY ITEM FOR TYPE A SALVAGED TOPSOIL. LUMP SUM.
 - THE GRADING LINE AS SHOWN ON THE TYPICAL AND CROSS SECTIONS IS TO THE TOP OF THE TOPSOIL. EARTHWORK QUANTITIES WERE NOT ADJUSTED FOR SALVAGE AND THE TOPSOIL QUANTITY IS INCLUDED IN THE MASS LINE BALANCE.
 - SEE ROUNDING DETAIL THIS SHEET.
 - INCLUDE(S) FLY ASH (15%) SUBGRADE STABILIZATION FOR THE ENTIRE PROJECT.
 - BORROW SOIL CONTAINING GYPSUM SHALL NOT BE INCORPORATED INTO THE SUBGRADE. REFER TO SECTION 202 OF THE ODOT 2009 STANDARD SPECIFICATIONS.
 - BACKFILL NOTE: TO BE BACKFILLED AND COMPACTED AS PART OF THE FINISHING OPERATIONS. COST TO BE INCLUDED IN UNCLASSIFIED EXCAVATION.
 - VARIES FROM 0' TO 20' FROM STA. 534+20 TO STA. 540+90. 20' FROM STA. 540+90 TO STA. 543+19.08. 20' FROM STA. 647+37.57 TO STA. 653+10. VARIES FROM 20' TO 0' FROM STA. 653+10 TO STA. 659+10.
 - REQUIRES CONSTRUCTION OF SAFETY EDGE AS SHOWN ON PSE-1-(LATEST REVISION) AND AS REFERRED TO IN THE SPECIAL PROVISIONS. THE ADDITIONAL COST OF ASPHALT TO CONSTRUCT THE SAFETY EDGE SHALL BE INCLUDED IN THE PRICE BID FOR SUPERPAVE TYPE "S3".
 - INTERSECTION OF CUT AND/OR FILL SLOPES WITH GROUND LINE TO BE ROUNDED AS PART OF FINISHING OPERATIONS. ROUNDING SHALL BE 5' MINIMUM FOR SMALLER CUTS AND FILLS TO 15' MAXIMUM FOR LARGER CUTS AND FILLS OR AS DESIGNATED BY THE ENGINEER. COST FOR ROUNDING TO BE INCLUDED IN PRICE BID FOR OTHER ITEMS OF WORK.

DESIGN	BB	DRM	OKLAHOMA DEPARTMENT OF TRANSPORTATION DESIGN DIVISION
DRAWN	JB	MKW	
CHECKED	BB		
APPROVED	GC		
SQUAD	JACOBS		

TYPICAL SECTIONS (2)

JOB PIECE NO. 20839(08) SHEET NO. 0003

PRINT DATE: 8/7/2017 F:\job\WKM2300 - EC1335 (TEXAS CO)\700CADD\702CIVIL\WKM2300_Typical 2.dwg