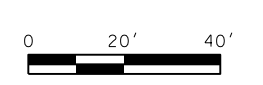
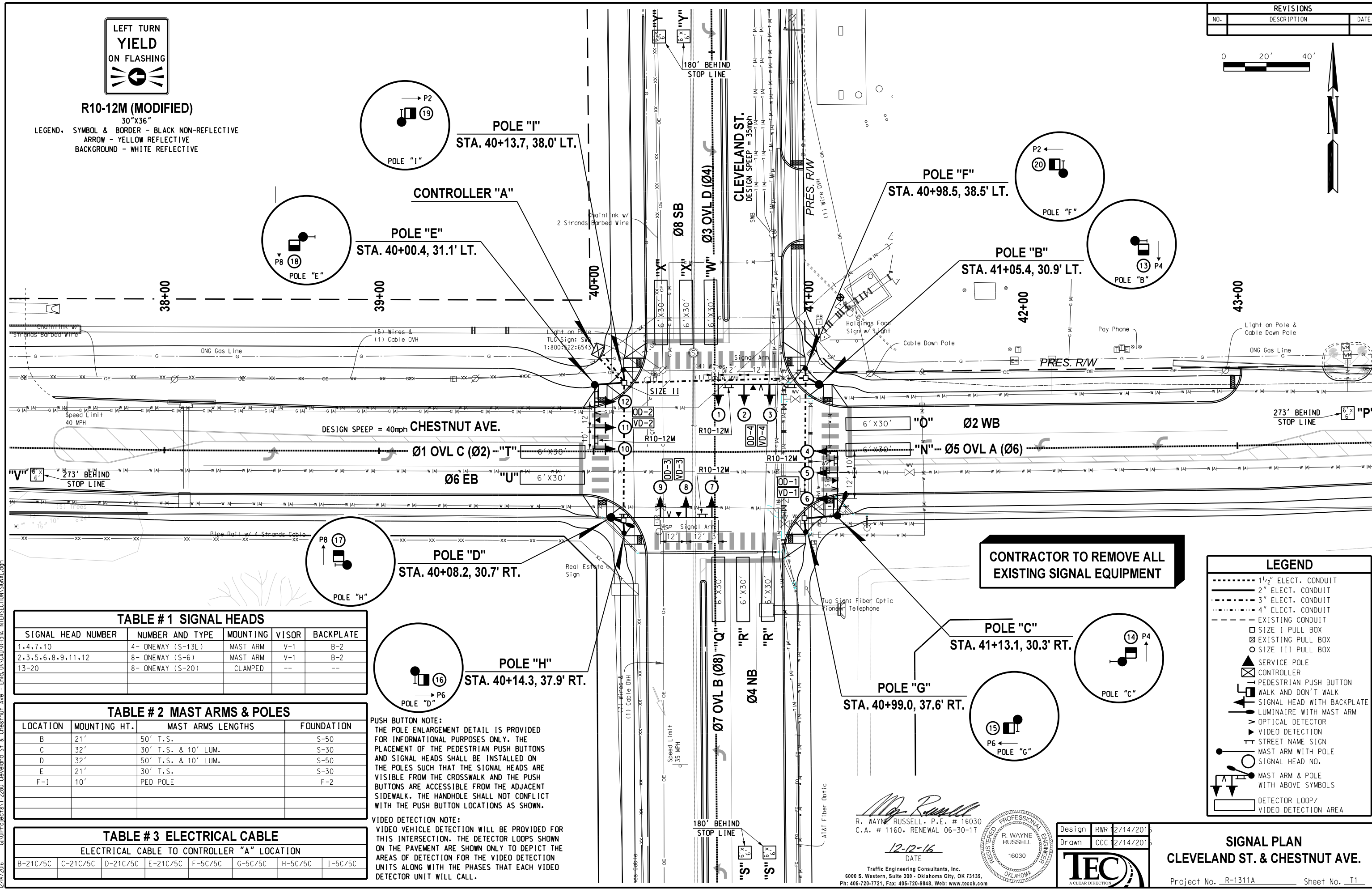


| REVISIONS | | |
|-----------|-------------|------|
| NO. | DESCRIPTION | DATE |
| | | |



R10-12M (MODIFIED)
30"x36"

LEGEND. SYMBOL & BORDER - BLACK NON-REFLECTIVE
ARROW - YELLOW REFLECTIVE
BACKGROUND - WHITE REFLECTIVE



CONTRACTOR TO REMOVE ALL EXISTING SIGNAL EQUIPMENT

| LEGEND | |
|--------|------------------------------------|
| ----- | 1/2" ELECT. CONDUIT |
| ----- | 2" ELECT. CONDUIT |
| ----- | 3" ELECT. CONDUIT |
| ----- | 4" ELECT. CONDUIT |
| ----- | EXISTING CONDUIT |
| □ | SIZE I PULL BOX |
| ⊗ | EXISTING PULL BOX |
| ○ | SIZE III PULL BOX |
| ⊗ | SERVICE POLE |
| ⊗ | CONTROLLER |
| ⊗ | PEDESTRIAN PUSH BUTTON |
| ⊗ | WALK AND DON'T WALK |
| ⊗ | SIGNAL HEAD WITH BACKPLATE |
| ⊗ | LUMINAIRE WITH MAST ARM |
| ⊗ | OPTICAL DETECTOR |
| ⊗ | VIDEO DETECTION |
| ⊗ | STREET NAME SIGN |
| ⊗ | MAST ARM WITH POLE |
| ⊗ | SIGNAL HEAD NO. |
| ⊗ | MAST ARM & POLE WITH ABOVE SYMBOLS |
| ⊗ | DETECTOR LOOP/VIDEO DETECTION AREA |

| SIGNAL HEAD NUMBER | NUMBER AND TYPE | MOUNTING | VISOR | BACKPLATE |
|--------------------|-------------------|----------|-------|-----------|
| 1,4,7,10 | 4- ONEWAY (S-13L) | MAST ARM | V-1 | B-2 |
| 2,3,5,6,8,9,11,12 | 8- ONEWAY (S-6) | MAST ARM | V-1 | B-2 |
| 13-20 | 8- ONEWAY (S-20) | CLAMPED | -- | -- |

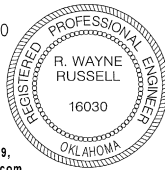
| LOCATION | MOUNTING HT. | MAST ARMS LENGTHS | FOUNDATION |
|----------|--------------|---------------------|------------|
| B | 21' | 50' T.S. | S-50 |
| C | 32' | 30' T.S. & 10' LUM. | S-30 |
| D | 32' | 50' T.S. & 10' LUM. | S-50 |
| E | 21' | 30' T.S. | S-30 |
| F-I | 10' | PED POLE | F-2 |

| ELECTRICAL CABLE TO CONTROLLER "A" LOCATION | | | | | | | |
|---|----------|----------|----------|---------|---------|---------|---------|
| B-21C/5C | C-21C/5C | D-21C/5C | E-21C/5C | F-5C/5C | G-5C/5C | H-5C/5C | I-5C/5C |

PUSH BUTTON NOTE:
THE POLE ENLARGEMENT DETAIL IS PROVIDED FOR INFORMATIONAL PURPOSES ONLY. THE PLACEMENT OF THE PEDESTRIAN PUSH BUTTONS AND SIGNAL HEADS SHALL BE INSTALLED ON THE POLES SUCH THAT THE SIGNAL HEADS ARE VISIBLE FROM THE CROSSWALK AND THE PUSH BUTTONS ARE ACCESSIBLE FROM THE ADJACENT SIDEWALK. THE HANDHOLE SHALL NOT CONFLICT WITH THE PUSH BUTTON LOCATIONS AS SHOWN.

VIDEO DETECTION NOTE:
VIDEO VEHICLE DETECTION WILL BE PROVIDED FOR THIS INTERSECTION. THE DETECTOR LOOPS SHOWN ON THE PAVEMENT ARE SHOWN ONLY TO DEPICT THE AREAS OF DETECTION FOR THE VIDEO DETECTION UNITS ALONG WITH THE PHASES THAT EACH VIDEO DETECTOR UNIT WILL CALL.

R. Wayne Russell
R. WAYNE RUSSELL, P.E. # 16030
C.A. # 1160, RENEWAL 06-30-17



12-12-16
DATE

Traffic Engineering Consultants, Inc.
6000 S. Western, Suite 300 - Oklahoma City, OK 73139,
Ph: 405-720-7721, Fax: 405-720-9848, Web: www.tecok.com

| | | |
|--------|-----|-----------|
| Design | RWR | 2/14/2016 |
| Drawn | CCC | 2/14/2016 |



SIGNAL PLAN
CLEVELAND ST. & CHESTNUT AVE.

Project No. R-1311A Sheet No. 11