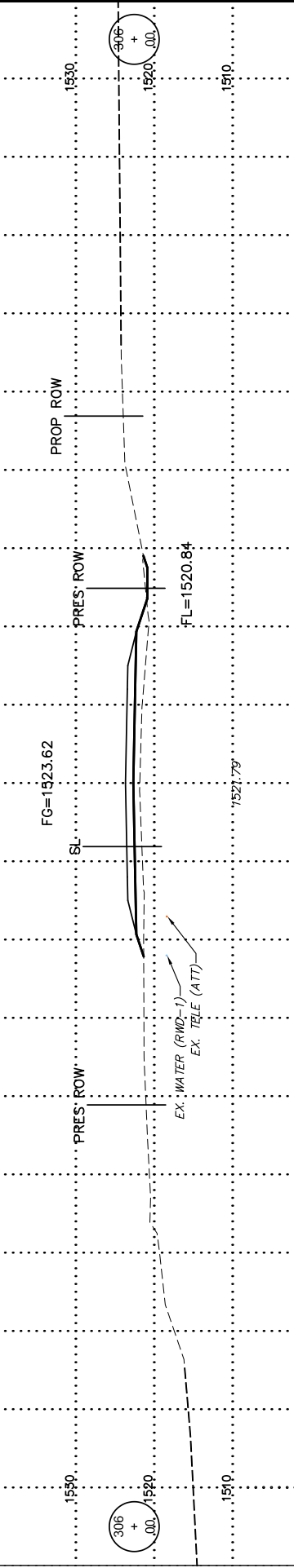
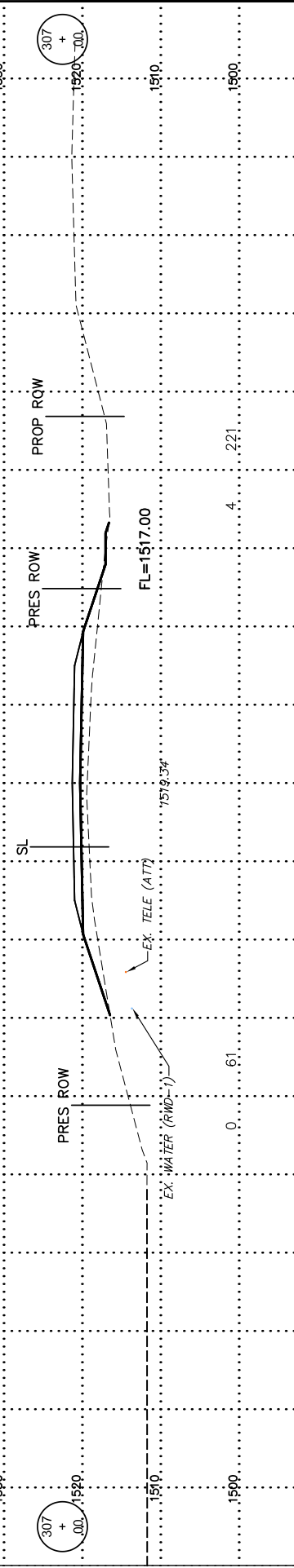
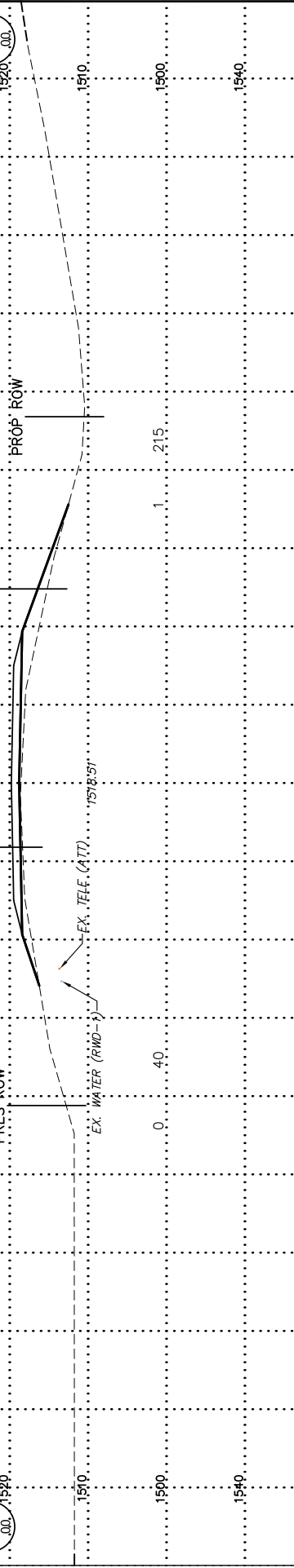
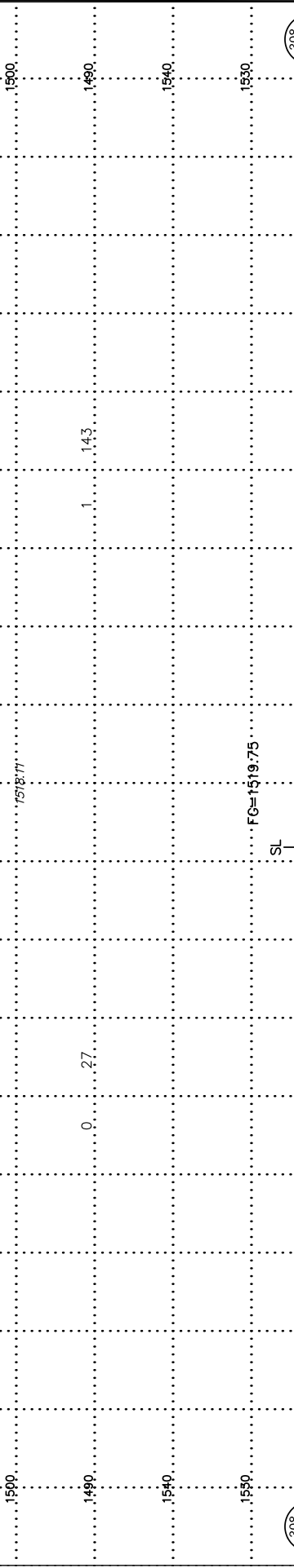
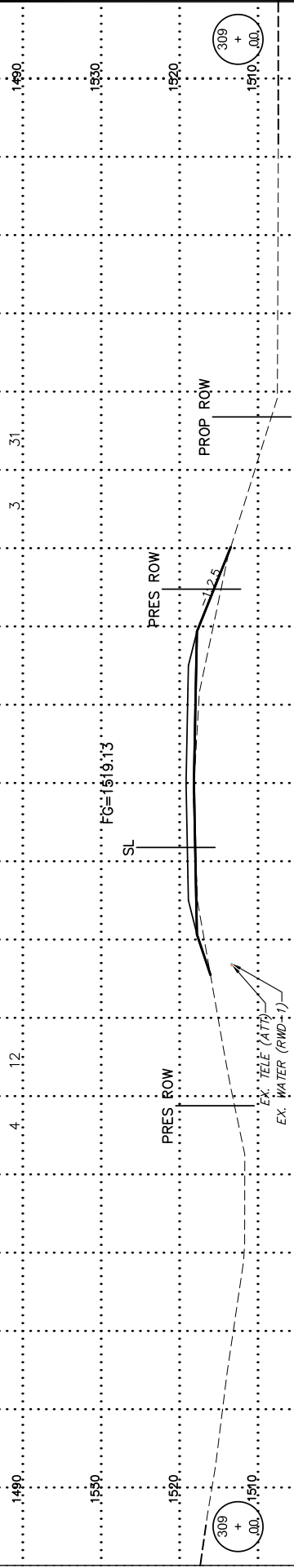
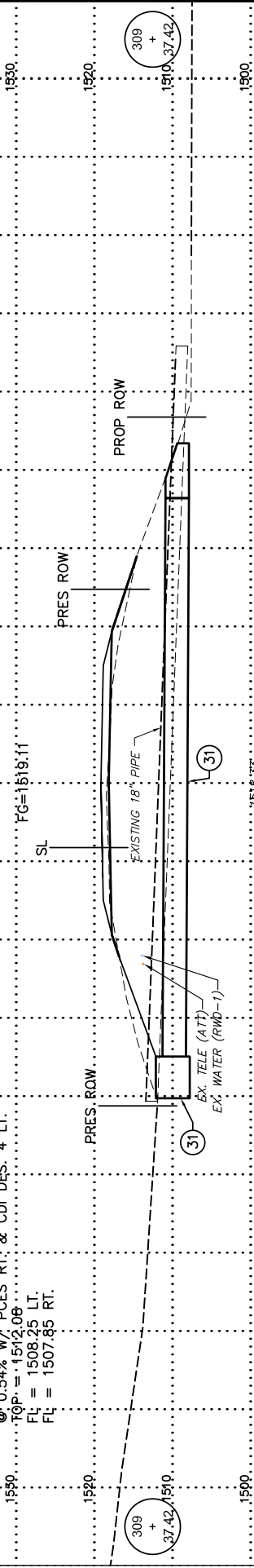


STR. NO. 31  
STA. 309+37.38' LT. & 36' RT.  
CONST. 36" RCP X.D. 74' LG.  
@ 0.54% W/ PDES RT. & CDI DES. 4 LT.  
TOP = 1512.06  
FL = 1508.25 LT.  
FL = 1507.85 RT.



NOTE: ALL UTILITY LOCATIONS ARE APPROXIMATE. CONTRACTOR TO VERIFY HORIZONTAL AND VERTICAL LOCATIONS OF ALL UTILITIES PRIOR TO CONSTRUCTION.