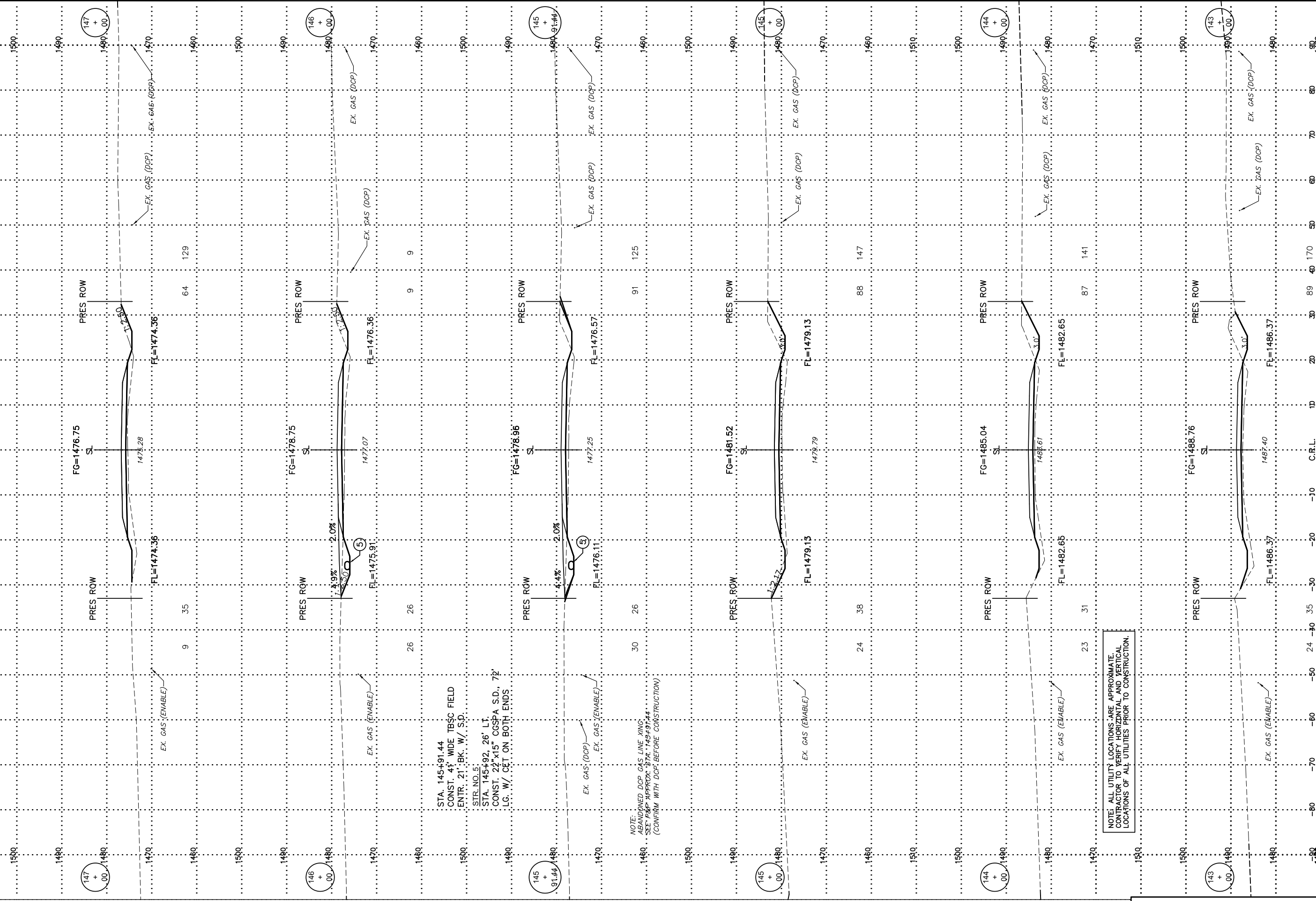


"VOLUMES"		
CY. DGS.		
EXC.		EMB.

"END AREAS"		
SQ. FT.		
EXC.		EMB.



STA. 145+91.44  
 CONST. 41' WIDE TBSC FIELD  
 ENTR. 21' BK. W/ S.D.  
 STR. NO. 5  
 STA. 145+92.26' LT  
 CONST. 22'x15" CGSPA S.D., 72'  
 LG. W/ CET ON BOTH ENDS

NOTE:  
 ABANDONED DCP GAS LINE XING  
 SEE P&P APPROX. STA. 143+97.44  
 (CONFIRM WITH DCP BEFORE CONSTRUCTION)

NOTE: ALL UTILITY LOCATIONS ARE APPROXIMATE.  
 CONTRACTOR TO VERIFY HORIZONTAL AND VERTICAL  
 LOCATIONS OF ALL UTILITIES PRIOR TO CONSTRUCTION.