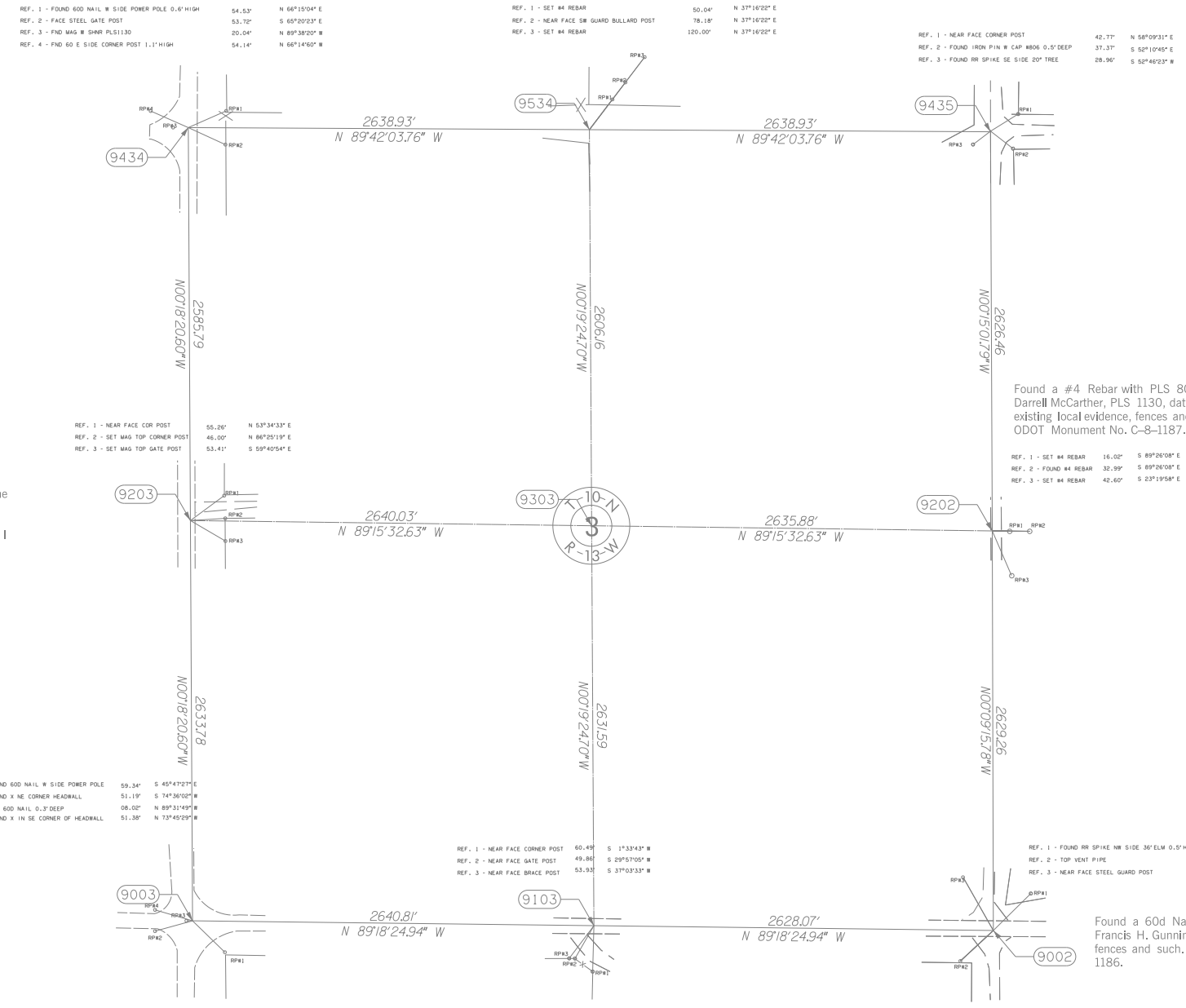


OKLAHOMA DEPARTMENT OF TRANSPORTATION					
FED. ROAD DIST. NO.	STATE	PROJ. NO.	FISCAL YEAR	SHEET NO.	TOTAL SHEETS
	OKLA.				
DESCRIPTION		REVISIONS		DATE	

Found fences, structures, assorted references and centerline control for SH58. I reestablished the centerline according to SAP No. 775(2) SH58 Plans, dated 1951, ODOT SWO1704 Survey, Caddo County for SH58, Survey Completed February 2, 1951. I set a MAG Nail with washer according to said plans and surveys. Said monument agrees with the local evidence, therefore I accepted the monument for the corner and assigned it ODOT Monument No. C-8-1190.



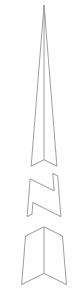
Found a #4 Rebar with PLS 806 Cap 0.5' below the surface of the gravel road per CCR by Darrell McCarther, PLS 1130, dated January 4, 2009, and one of the references. Also found existing local evidence, fences and such. I accepted the #4 Rebar for corner and assigned it ODOT Monument No. C-8-1187.

REF. 1 - SET #4 REBAR 16.02' S 89°26'08\"/>

Found a 60d Nail 0.2' below the surface of the road and one of the references per CCR by Francis H. Gunning, PLS 806, dated December 28, 1995. Also found existing local evidence, fences and such. I accepted the 60d Nail for corner and assigned it ODOT Monument No. C-8-1186.

Set a #4 Rebar with Cap 0.5' below the surface of the gravel road proportionately between fence corner and lone post to north delineating north-south one quarter section line and on line between section corners. Said point lands in the middle of the existing roadway. Corner as established appears to agree with local evidence and evidence of occupation has viewed from 2010 NAIP Imagery. I assigned said corner ODOT Monument No. C-8-1189.

Found a PK Nail 0.1' deep in asphalt Road and all the references per CCR by Darrell McCarther, PLS 1130, dated January 30, 2000 and a 60d Nail on centerline of SH58 and all the references per CCR by Buddy R. Hokit, PLS 1326, dated June 21, 2007. Also found existing fences, structures, assorted references and centerline control for SH58. The PK Nail found 8' east of the centerline according to CCR by Darrell McCarther is the true corner according to SAP No. 775(2) SH58 Plans, dated 1951 and ODOT SWO1704 Survey, Caddo County for SH58, Survey Completed February 2, 1951, surveys. Said monument agrees with the local evidence, therefore I accepted the monument for the corner and assigned it ODOT Monument No. C-8-1188.



SCALE: 1\"/>

OKLAHOMA DEPARTMENT OF TRANSPORTATION SURVEY DIVISION			
PLS	GSR		
DRAWN	JMW		
CHECKED			
APPROVED			
CREW	E I Reno	SWO 4864 (1)	PROJECT NO. 24092(04) SHEET NO. 5038

**SURVEY DATA SHEET**