

Found existing local evidence, fences and such. Set a #4 Rebar with Cap 0.5' below the surface of the gravel road proportionately between fence corners. The distance between corners is 86.1'. Split between fence corners lands in the middle of the existing roadway. Corner as established appears to agree with local evidence and evidence of occupation has viewed from 2010 NAIP Imagery. I assigned said corner ODOT Monument No. C-8-1195.

Found existing fences in the area of corner, east-west position of corner established in line with fence to north, this direction the section line is closed. An extension of this fence to the south closely splits the east and west right of way fences to the south. The north-south position was established by splitting the north and south right of way fences. This position is in the middle of the existing east-west road. Therefore I set a MAG Nail with Washer in asphalt for said corner and assigned it ODOT Monument No. C-8-1194.

Found existing local evidence, fences and such. Set a #4 Rebar with Cap 0.5' below the surface of the gravel road proportionately between fence corners. The distance between corners is 86.1'. Split between fence corners lands in the middle of the existing roadway. Corner as established appears to agree with local evidence and evidence of occupation has viewed from 2010 NAIP Imagery. I assigned said corner ODOT Monument No. C-8-1209.

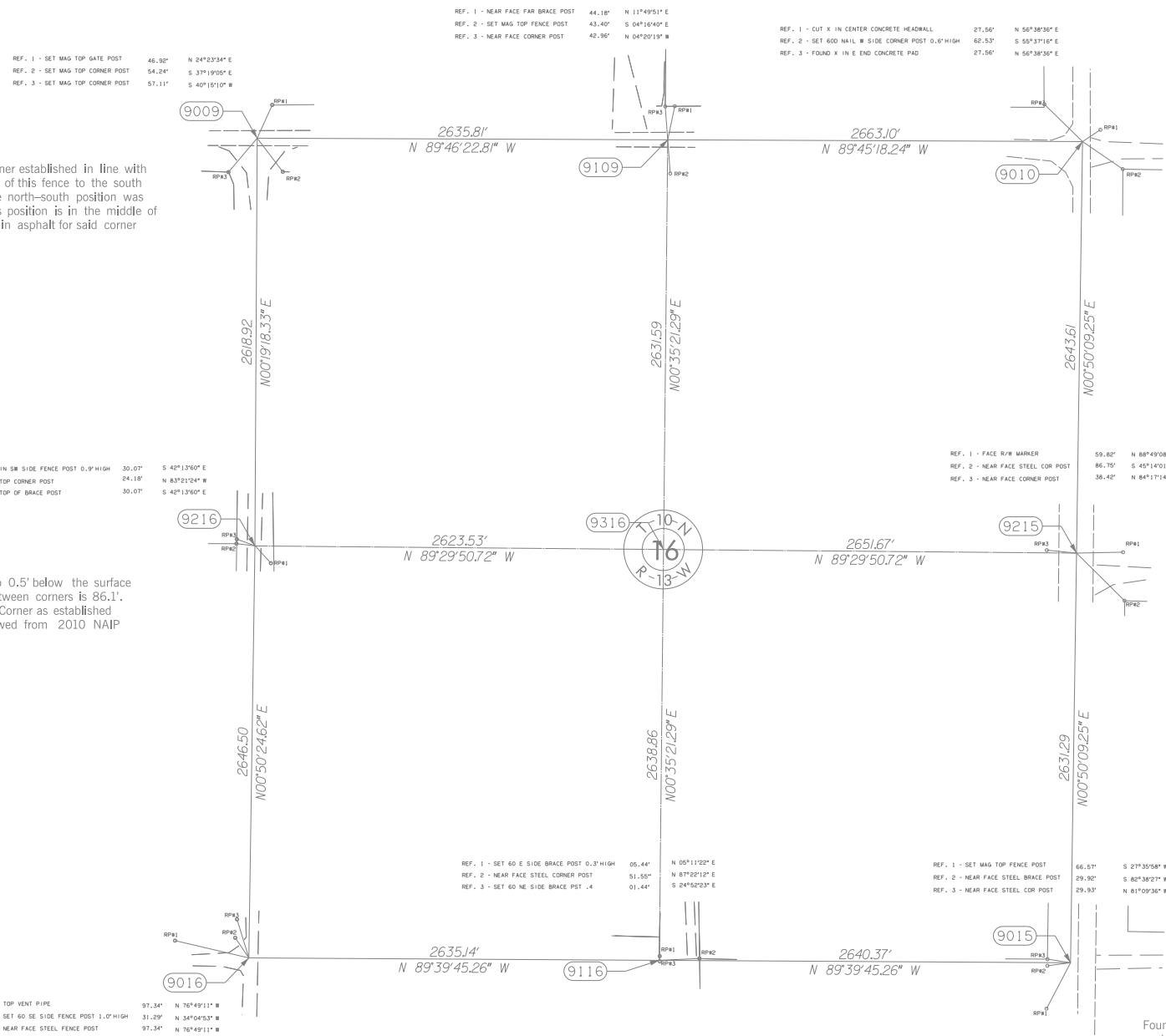
Found existing local evidence, fences and such. The east-west position of corner was established in the approximate center of the north-south section line road. The north-south position was established approximately 31' south and parallel to the east-west fence, being the north section line RW, along the south line of the southwest quarter of Section 16. This line of the section is closed but agrees with the section line road open to the west. Therefore I set a #4 Rebar with Cap 0.5' below the surface of the road for said corner and assigned it ODOT Monument No. C-8-1207.

Found existing local evidence, fences and such. Set a #4 Rebar with Cap flush with the surface on line between section corners and is in line with north-south quarter line fence. Said point is approximately 31' south and parallel to the east-west fence, being the north section line RW, along the south line of the southwest quarter of Section 16. The south line of Section 16 is closed. The corner as established appears to agree with local evidence and evidence of occupation has viewed from 2010 NAIP Imagery. I assigned said corner ODOT Monument No. C-8-1208.

Found fences, structures, assorted references and centerline control for SH58. I reestablished the centerline according to SAP No. 775(2) SH58 Plans, dated 1951 and ODOT SW01704 Survey, Caddo County for SH58, Survey Completed February 2, 1951. Therefore I set a MAG Nail with washer according to said plans and surveys. Said monument agrees with the local evidence, therefore I accepted the monument for the corner and assigned it ODOT Monument No. C-8-1197.

Found fences, structures, assorted references and centerline control for SH58. I reestablished the centerline according to SAP No. 775(2) SH58 Plans, dated 1951 and ODOT SW01704 Survey, Caddo County for SH58, Survey Completed February 2, 1951. Therefore I set a MAG Nail with washer according to said plans and surveys. Said monument agrees with the local evidence, therefore I accepted the monument for the corner and assigned it ODOT Monument No. C-8-1206.

Found fences, structures, assorted references and centerline control for SH58. I reestablished the centerline according to SAP No. 775(2) SH58 Plans, dated 1951 and ODOT SW01704 Survey, Caddo County for SH58, Survey Completed February 2, 1951. Therefore I set a MAG Nail with washer according to said plans and surveys. Said monument agrees with the local evidence, therefore I accepted the monument for the corner and assigned it ODOT Monument No. C-8-1204.



SCALE:
1"=500'

NOTE: REFERENCE'S SHOWN ARE NOT TO SCALE.