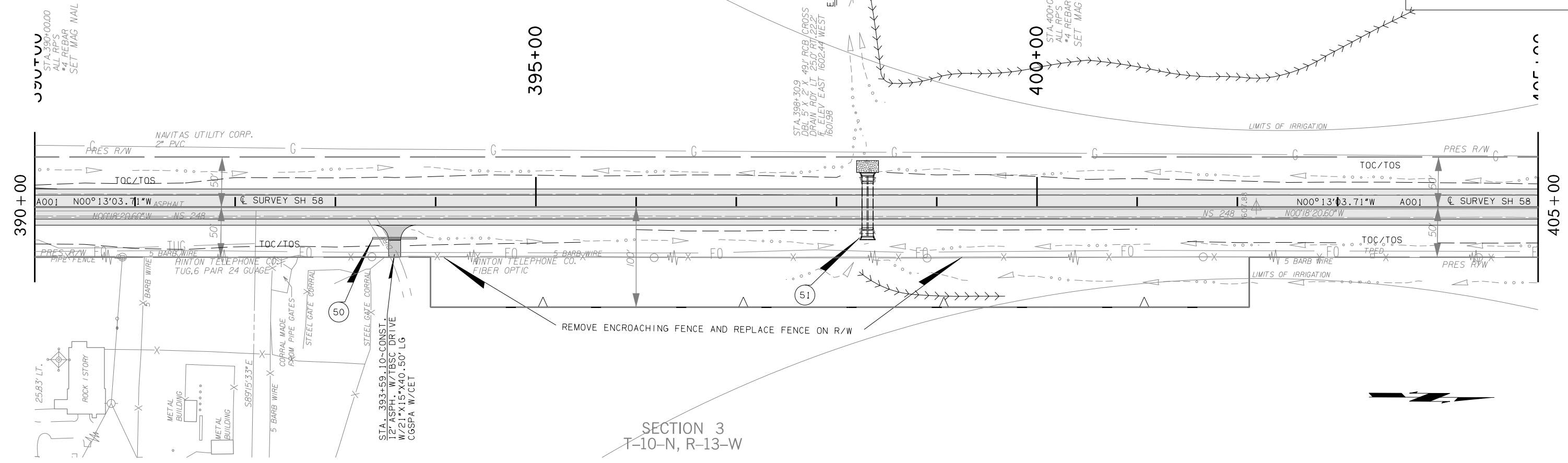
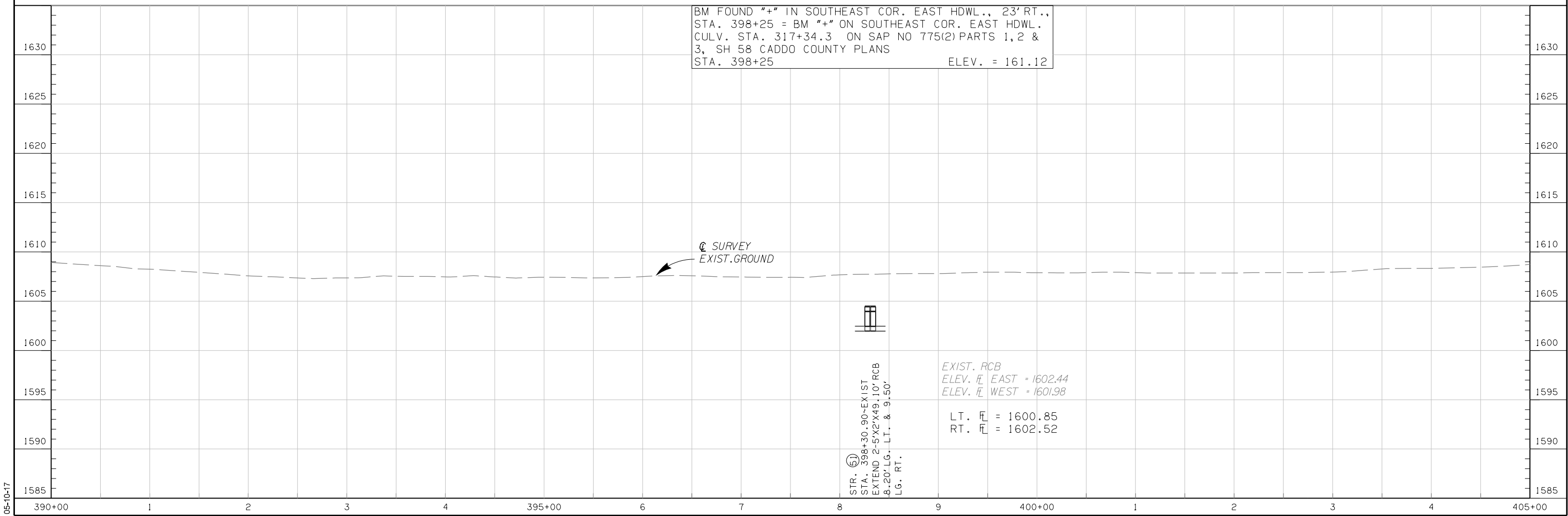


SECTION 4
T-10-N, R-13-W



SECTION 3
T-10-N, R-13-W

BM FOUND "+" IN SOUTHEAST COR. EAST HDWL., 23' RT.,
 STA. 398+25 = BM "+" ON SOUTHEAST COR. EAST HDWL.
 CULV. STA. 317+34.3 ON SAP NO 775(2) PARTS 1, 2 &
 3, SH 58 CADDO COUNTY PLANS
 STA. 398+25 ELEV. = 161.12



05-10-17