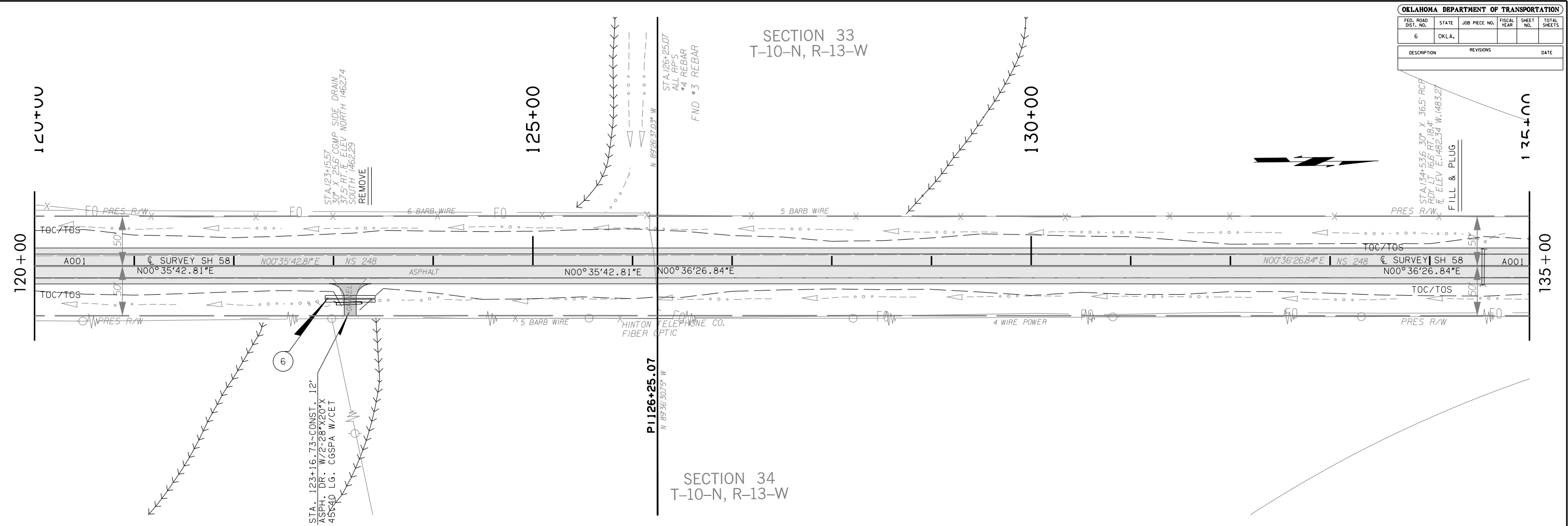


SECTION 33  
T-10-N, R-13-W

SECTION 34  
T-10-N, R-13-W



BM TOP OF A CONC. FILLED 7" STEEL FENCE POST 50' LT., STA. 121+19 ELEV. = 1463.87

BM FOUND "+" IN CENTER OF EAST HDWL., 19' RT., STA. 134+53 = BM "+" ON C HDWL. CULV. 53 RT., STA. 53+50.7 ON SAP NO. 775(2) PARTS 1, 2 & 3 SH 58 CADDO COUNTY PLANS. STA. 134+53 ELEV. = 1485.99

