

STATE OF OKLAHOMA
DEPARTMENT OF TRANSPORTATION

PLAN OF PROPOSED
TRAFFIC SIGNAL PLAN & ROADWAY MODIFICATION
U.S.70 & SILO ROAD
FEDERAL AID PROJECT NO.HSIPG-022N(217)TR
BRYAN COUNTY
STATE JOB NUMBER 33251(04)
CONTROL SECTION NO.70-07-06

R 8 E

REVISIONS		
NO.	DESCRIPTION	DATE
1	Multiple Revisions (Entire Sheet)	10/18/17

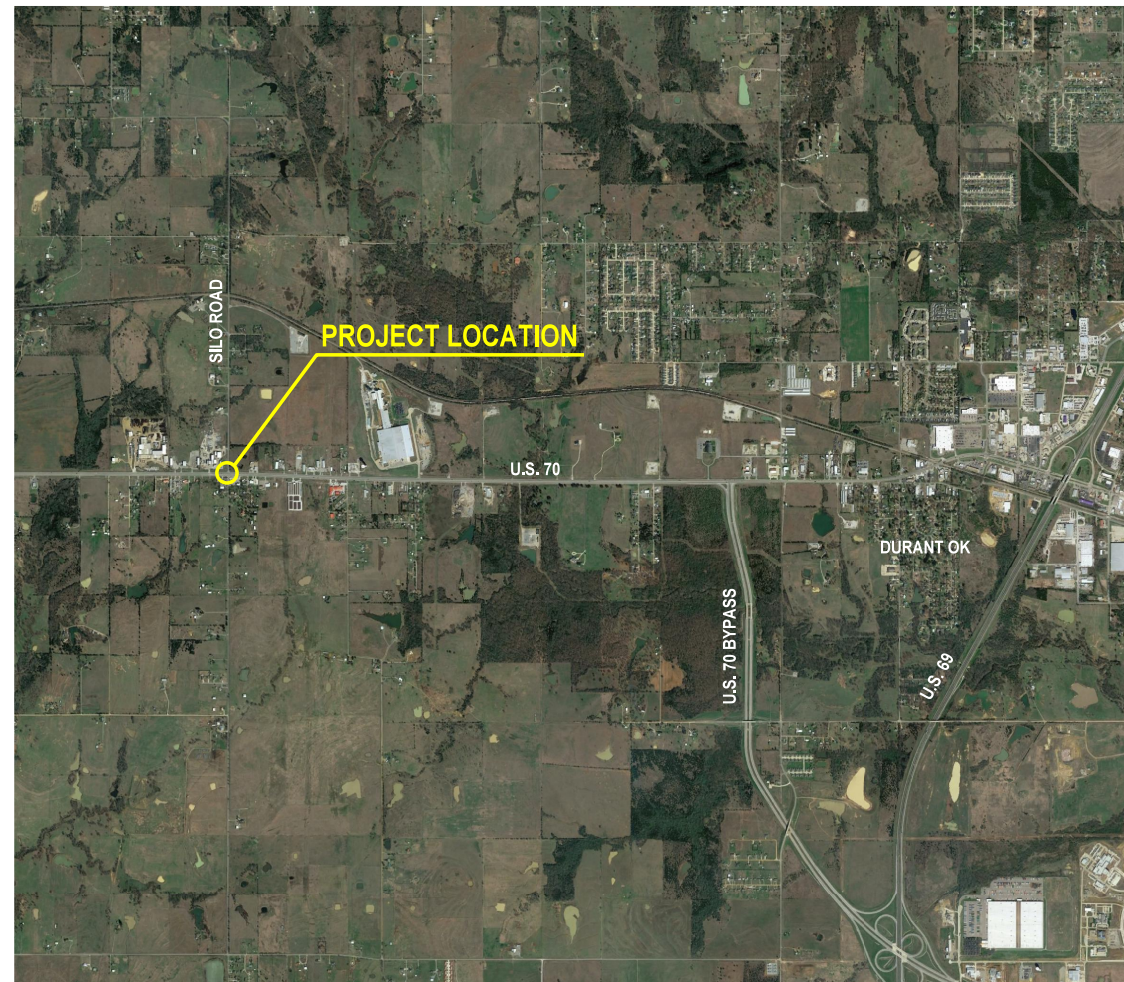
INDEX OF SHEETS

0001.	TITLE SHEET
AR01.	SUMMARY OF PAY QUANTITIES AND NOTES (ROADWAY)
AT01.	SUMMARY OF PAY QUANTITIES AND NOTES (TRAFFIC)
RO01.	PLAN SHEET
RO02.	REMOVAL & EROSION CONTROL SHEET
S001-S003.	SURVEY DATA
TO01.	TRAFFIC SIGNAL PLAN
TO02.	SIGNAL DETAIL PLAN
TO03.	SIGNAL WIRING DIAGRAM
TO04.	SIGNING AND STRIPING PLAN
TO05.	TYPICAL SIGNAL TRAFFIC CONTROL
TO06.	TYPICAL SHOULDER CLOSURE DETAIL

THE FOLLOWING ODOT STANDARDS WILL
BE REQUIRED ON THIS PROJECT:

SIGNING & STRIPING	SIGNALS	TRAFFIC CONTROL	ROADWAY
PM1-1-02	PMAP1-2-00	TCS1-1-01	TSC2-3-2
PM3-1-02	SPBP1-1-00	TCS2-1-00	ASCD-5-2
PM6-1-00	SA1-1-02	TCS3-1-01	CSCD-5-3
RSD1-1-00	ID1-1-00	TCS4-1-01	SSCD-3-1
WSD2-1-00	SNS1-1-02	TCS5-1-00	TSD-2-0
SBS1-1-00	TSSS1-1-00	TCS6-1-02	LECS-4-1
SBS2-1-00	PWD1-2-00	TCS7-1-02	
GMS1-1-00	CFD1-2-00	TCS8-1-00	
SSP1-1-02	CC1-1-00	TCS9-1-01	
SSA1-1-00	TSSP1-1-00	TCS10-1-00	
	MAD1-1-00	TCS11-1-01	
	RPMAD1-1-00		
	MPMAD1-1-00		
	MDL1-1-00		
	MDL2-1-00		
	CCD1-1-00		
	PBD1-1-00		

SCALE	
LAYOUT MAP	1" =
PLAN & PROFILE	1" =
SIGNAL PLAN	1" = 20'
STRIPING PLAN	1" = 30'



BRYAN COUNTY
DISTRICT 1

CONVENTIONAL SYMBOLS

- PROPOSED ROADS
- RAILROADS
- RANGE & TOWNSHIP SECTION LINES
- QUARTER SECTION LINES
- FENCE
- GROUND LINE
- EXISTING ROADS
- BASE LINE
- GRADE LINES
- TELEPHONE & TELEGRAPH
- POWER LINES
- OIL WELLS
- BUILDINGS
- DRAINAGE STRUCTURES -IN PLACE
- DRAINAGE STRUCTURES-NEW
- RIGHT-OF-WAY LINES-EXISTING
- RIGHT-OF-WAY LINES-NEW
- RIGHT-OF-WAY MARKERS-IN PLACE
- RIGHT-OF-WAY MARKERS-REMOVE & RESET
- RIGHT-OF-WAY MARKERS-NEW
- CONTROLLED ACCESS
- RIGHT -OF-WAY FENCE

CONVENTIONAL SIGNS

- INTERSTATE HIGHWAY
- U.S. HIGHWAY
- STATE HIGHWAY

EXISTING

- DETECTOR LOOP
- CONTROLLER
- PULL BOX
- CONDUIT
- MAST ARM & POLE W/SIGNAL INDICATION
- WALK & DON'T WALK INDICATION
- SIGNAL INDICATION
- SIGNAL INDICATION W/BACK-PLATE
- PEDESTAL POLE W/SIGNAL & WALK & DON'T INDICATIONS
- COMBINATION-TRAFFIC SIGNAL & STREET LIGHT ON ONE POLE

2009 OKLAHOMA STANDARD SPECIFICATIONS FOR HIGHWAY CONSTRUCTION - ENGLISH GOVERN, APPROVED BY THE U.S. DEPARTMENT OF TRANSPORTATION, FEDERAL HIGHWAY ADMINISTRATION, JANUARY 4, 2010.

PROJECT LENGTH.....INTERSECTION
EQUATIONS.....NONE
EXCEPTIONS.....NONE

TEC
A CLEAR DIRECTION

R. Wayne Russell
R. WAYNE RUSSELL, P.E. # 16030
C.A. # 1160, RENEWAL 06-30-19

10-18-17
DATE

6000 S. Western, Suite 300 - Oklahoma City, OK 73139, Ph: 405-720-7721, Fax: 405-720-9848, Web: www.tecok.com



OKLAHOMA DEPARTMENT OF TRANSPORTATION	DEPARTMENT OF TRANSPORTATION FEDERAL HIGHWAY ADMINISTRATION
DATE APPROVED	DATE APPROVED
BY	BY
CHIEF ENGINEER	DIVISION ADMINISTRATOR
S.W.O.	SHEET NO. 1