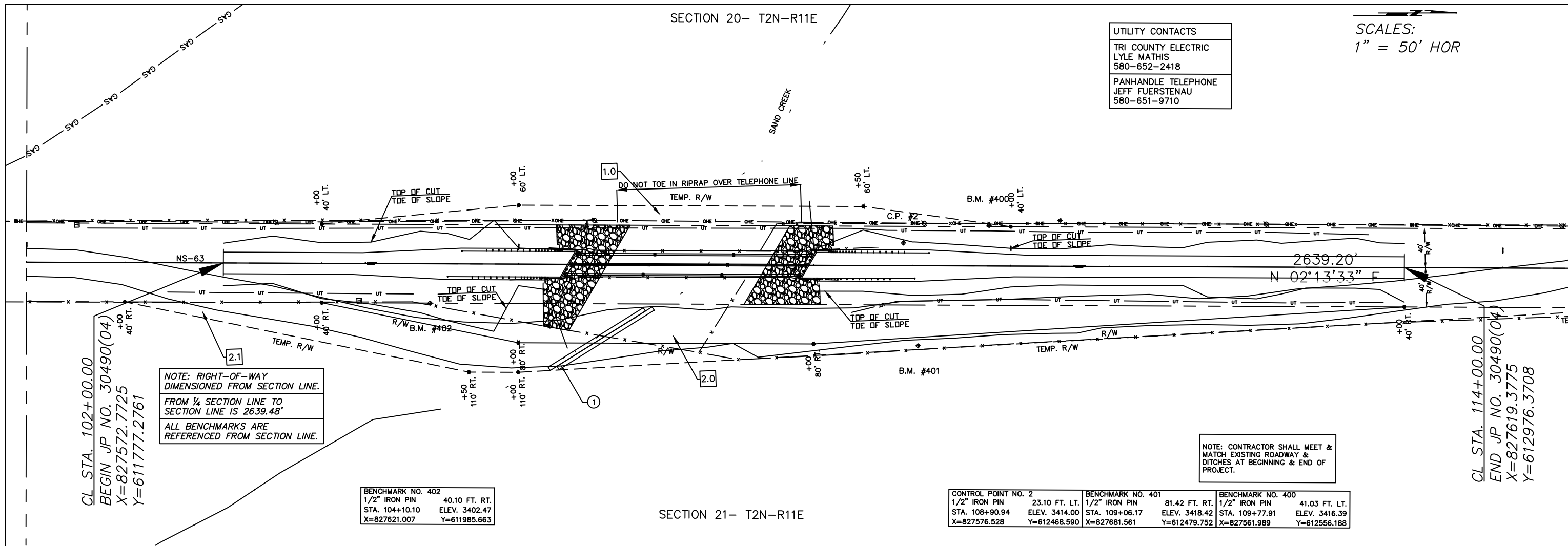


SECTION 20- T2N-R11E

UTILITY CONTACTS	
TRI COUNTY ELECTRIC	LYLE MATHIS 580-652-2418
PANHANDLE TELEPHONE	JEFF FUERSTENAU 580-651-9710

SCALES:
1" = 50' HOR



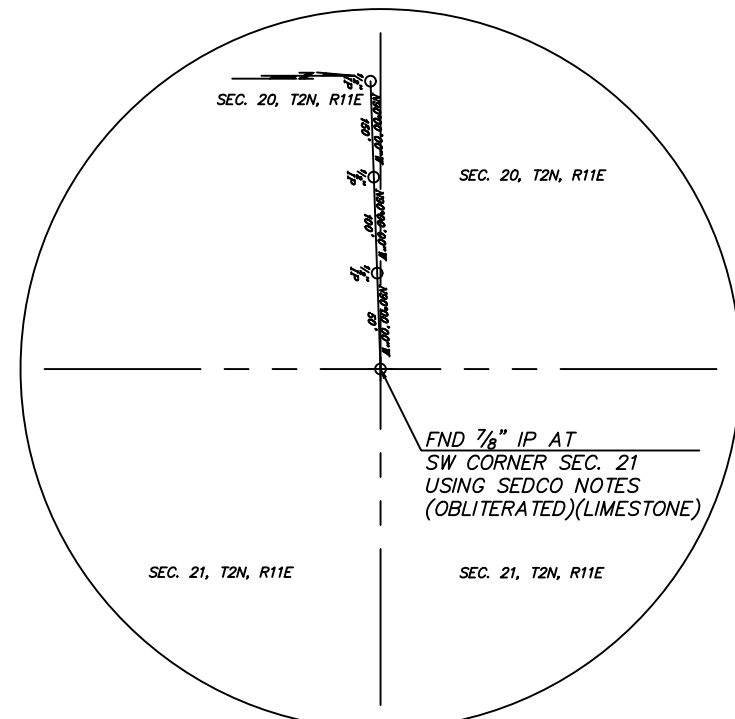
NOTE: RIGHT-OF-WAY
DIMENSIONED FROM SECTION LINE.
FROM 1/4 SECTION LINE TO
SECTION LINE IS 2639.48'
ALL BENCHMARKS ARE
REFERENCED FROM SECTION LINE.

NOTE: CONTRACTOR SHALL MEET &
MATCH EXISTING ROADWAY &
DITCHES AT BEGINNING & END OF
PROJECT.

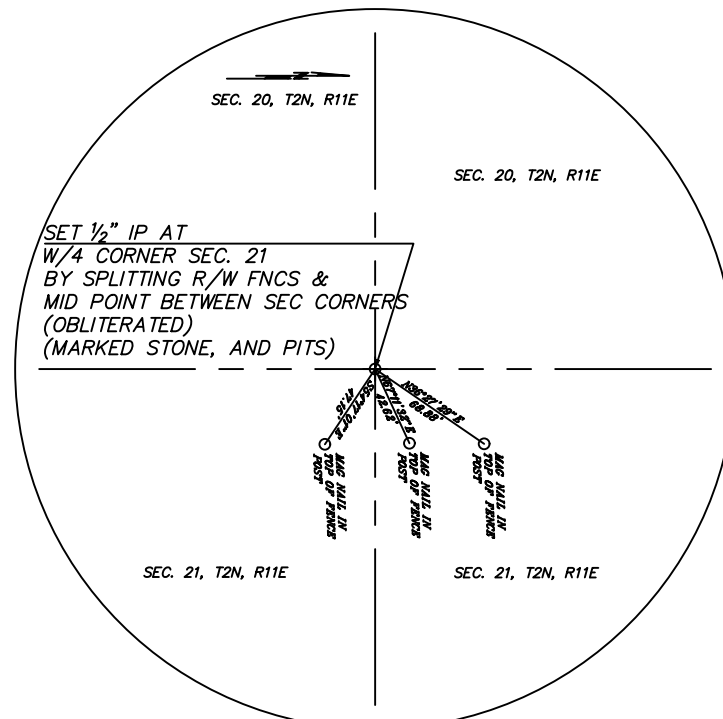
BENCHMARK NO. 402	
1/2" IRON PIN	40.10 FT. RT.
STA. 104+10.10	ELEV. 3402.47
X=827621.007	Y=611985.663

CONTROL POINT NO. 2		BENCHMARK NO. 401		BENCHMARK NO. 400	
1/2" IRON PIN	23.10 FT. LT.	1/2" IRON PIN	81.42 FT. RT.	1/2" IRON PIN	41.03 FT. LT.
STA. 108+90.94	ELEV. 3414.00	STA. 109+06.17	ELEV. 3418.42	STA. 109+77.91	ELEV. 3416.39
X=827576.528	Y=612468.590	X=827681.561	Y=612479.752	X=827561.989	Y=612556.188

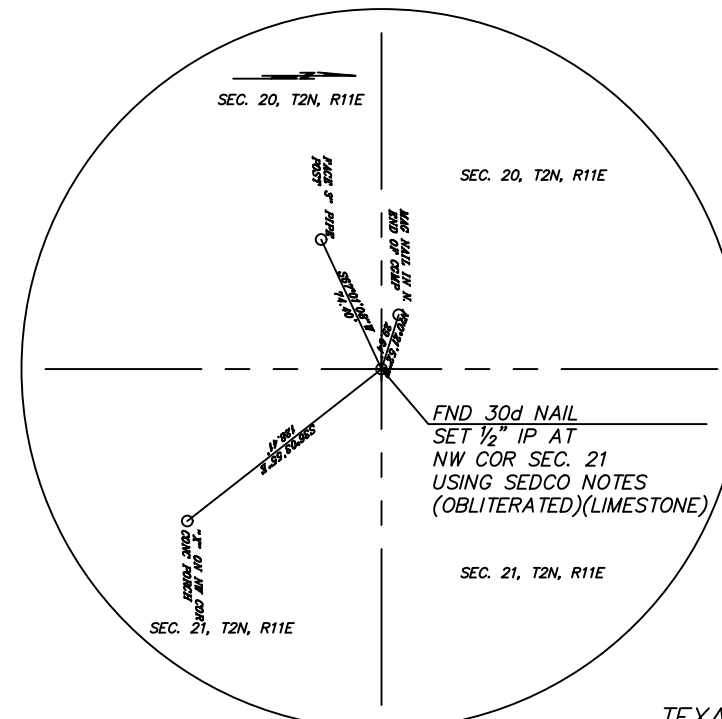
SECTION 21- T2N-R11E



SW SECTION CORNER
SECTION 21, T2N, R11E
STA. 100+00.00
X=827565.0050
Y=611577.4270



E. 1/4 SECTION CORNER
SECTION 21, T2N, R11E
STA. 126+39.20
X=827667.5050
Y=614214.6380



NW SECTION CORNER
SECTION 21, T2N, R11E
STA. 152+78.23
X=827765.1510
Y=616851.8600

TEXAS COUNTY SAND CREEK
ALIGNMENT, SURVEY
REFERENCES AND R/W
J/P NO. 30490(04) SHEET NO. S001