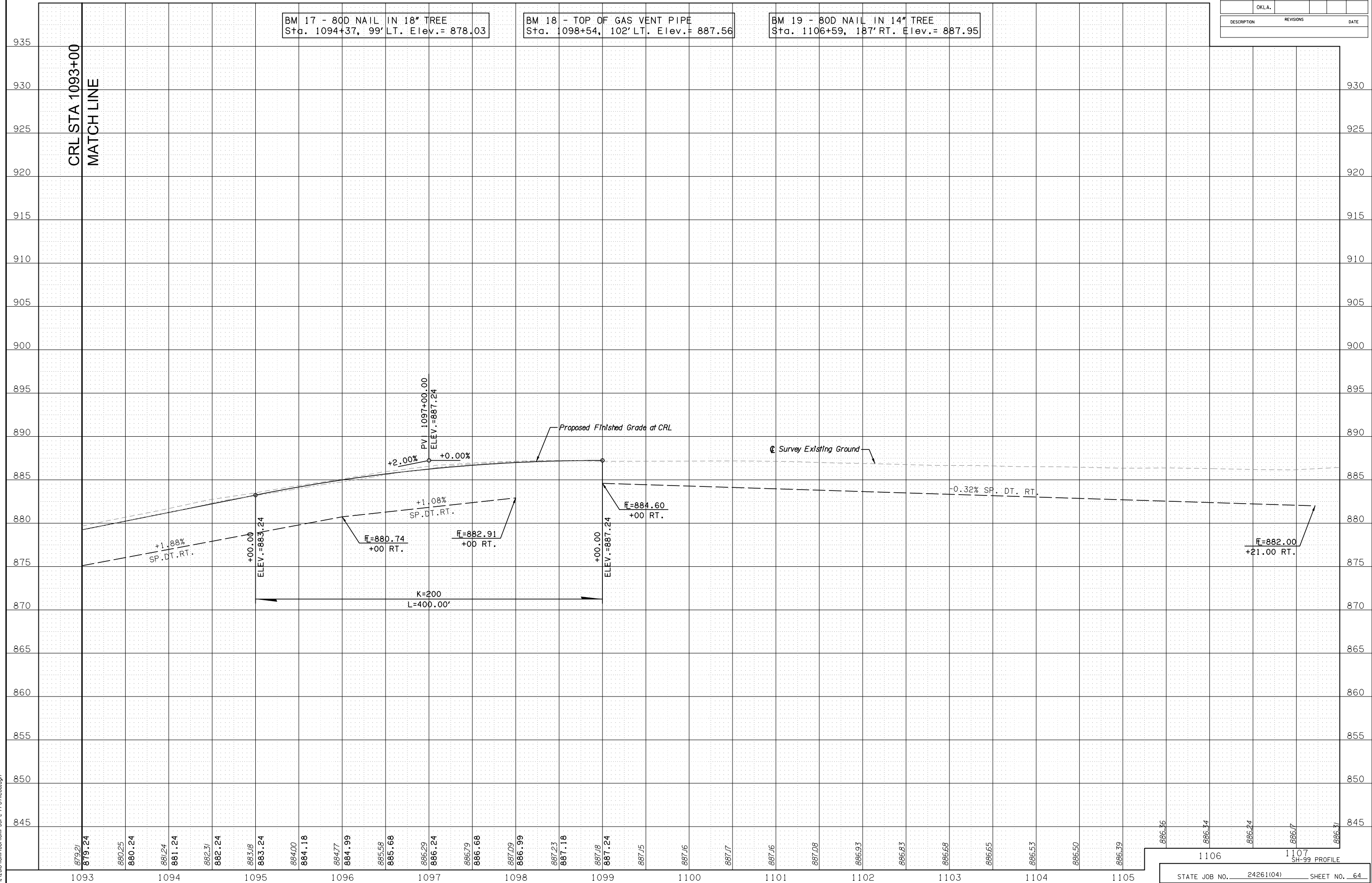


BM 17 - 80D NAIL IN 18" TREE
Sta. 1094+37, 99' LT. Elev.= 878.03

BM 18 - TOP OF GAS VENT PIPE
Sta. 1098+54, 102' LT. Elev.= 887.56

BM 19 - 80D NAIL IN 14" TREE
Sta. 1106+59, 187' RT. Elev.= 887.95

CRL STA 1093+00
MATCH LINE



DSWR: MKX PLOTTED BY: Joyce.Graham 6/19/2017 11:45:40 AM
 I:\2010\OKM\1001\001-00-C-Profiles.dgn