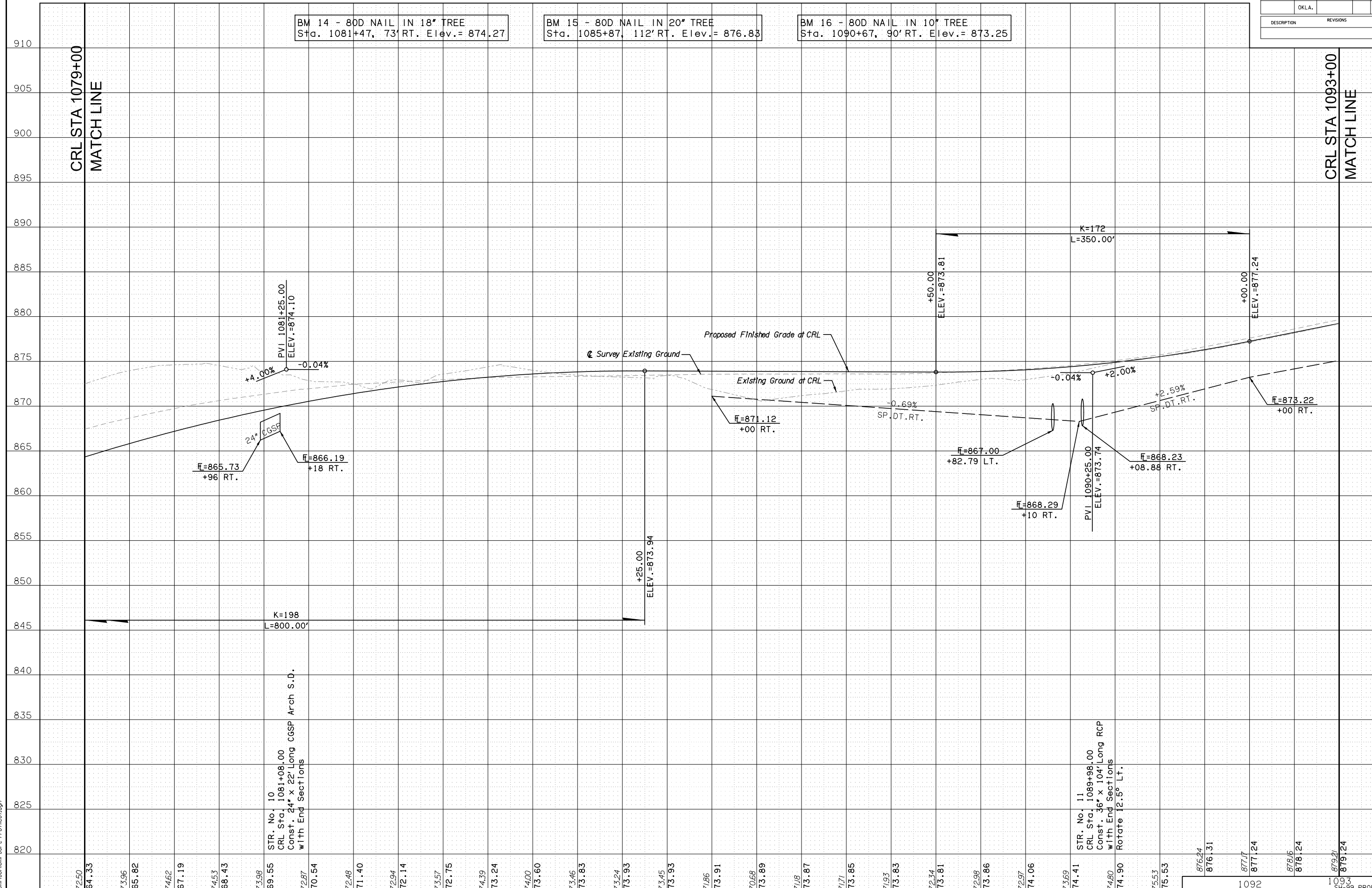


BM 14 - 80D NAIL IN 18" TREE  
Sta. 1081+47, 73' RT. Elev.= 874.27

BM 15 - 80D NAIL IN 20" TREE  
Sta. 1085+87, 112' RT. Elev.= 876.83

BM 16 - 80D NAIL IN 10" TREE  
Sta. 1090+67, 90' RT. Elev.= 873.25



DSWR: MKX PLOTTED BY: Joyce.Graham 6/19/2017 11:45:38 AM  
 I:\2010\OKM\1001\001-C-Profile07.dgn