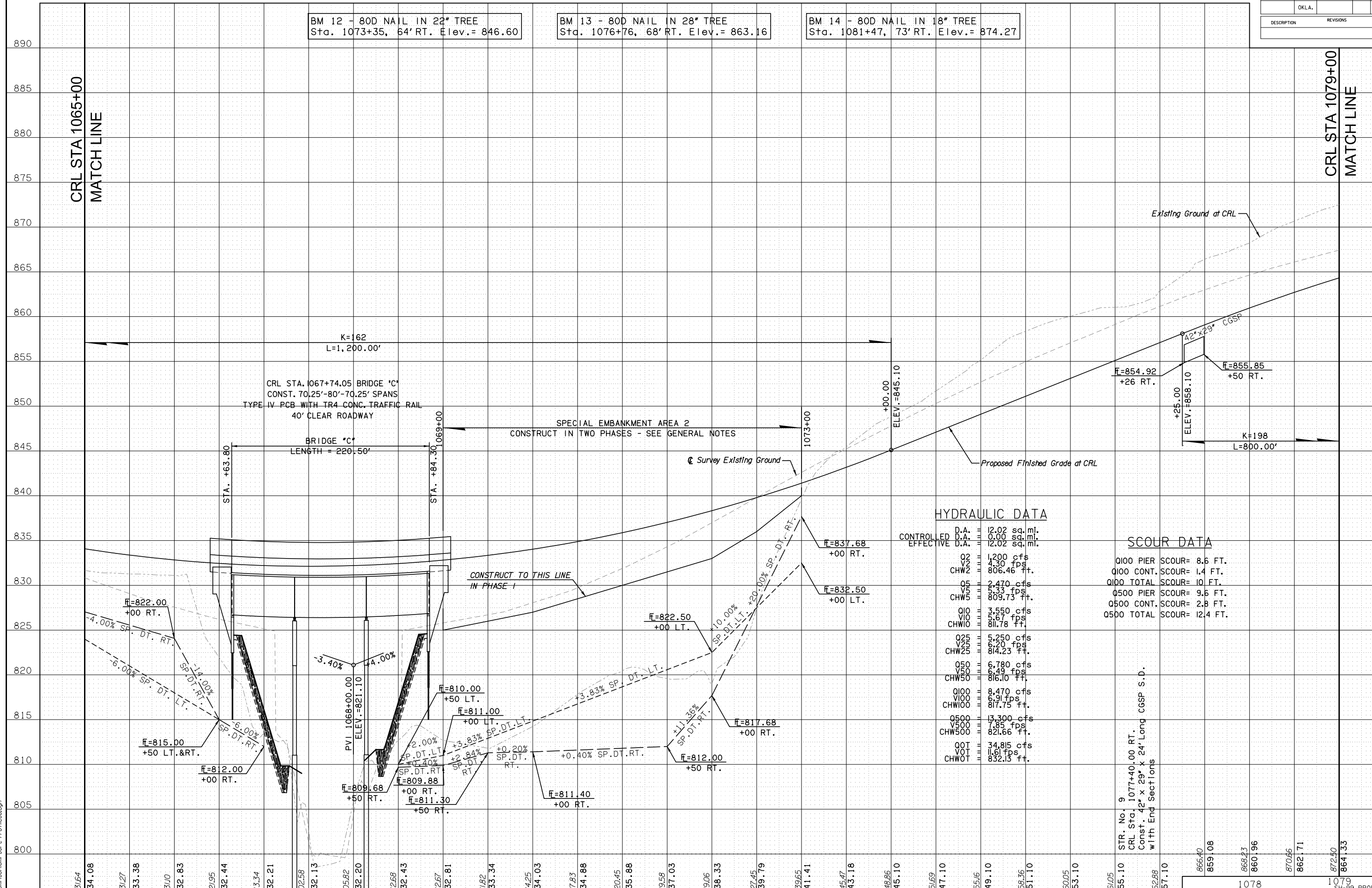


BM 12 - 80D NAIL IN 22" TREE
Sta. 1073+35, 64' RT. Elev.= 846.60

BM 13 - 80D NAIL IN 28" TREE
Sta. 1076+76, 68' RT. Elev.= 863.16

BM 14 - 80D NAIL IN 18" TREE
Sta. 1081+47, 73' RT. Elev.= 874.27



HYDRAULIC DATA

D.A.	12.02 sq. mi.
CONTROLLED D.A.	0.00 sq. mi.
EFFECTIVE D.A.	12.02 sq. mi.
Q2	1,200 cfs
V2	4.50 fps
CHW2	806.46 ft.
Q5	2,470 cfs
V5	5.33 fps
CHW5	809.73 ft.
Q10	3,550 cfs
V10	5.67 fps
CHW10	811.78 ft.
Q25	5,250 cfs
V25	6.20 fps
CHW25	814.23 ft.
Q50	6,780 cfs
V50	6.49 fps
CHW50	816.10 ft.
Q100	8,470 cfs
V100	6.91 fps
CHW100	817.75 ft.
Q500	13,300 cfs
V500	7.85 fps
CHW500	821.66 ft.
QOT	34,815 cfs
VOT	11.61 fps
CHWOT	832.13 ft.

SCOUR DATA

Q100 PIER SCOUR=	8.6 FT.
Q100 CONT. SCOUR=	1.4 FT.
Q100 TOTAL SCOUR=	10 FT.
Q500 PIER SCOUR=	9.6 FT.
Q500 CONT. SCOUR=	2.8 FT.
Q500 TOTAL SCOUR=	12.4 FT.

STR. No. 9
CRL Sta. 1077+40.00 RT.
Const. 42" x 29" x 24' Long CGSP S.D.
with End Sections

1078 1079
866.40 859.08 868.23 860.96 870.66 862.71 872.50 864.33

DSWR: MKX PLOTTED BY: Joyce.Graham 6/9/2017 11:45:35 AM
 I:\2010\OKM\001\001\001-C-Profile.dgn